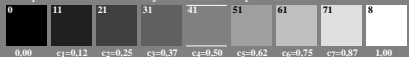


9 step series, sample and surround mean Grey is U41, all samples are lighter based on $e_{08}=0,35$.



9 step series based on all visual adjustments used for output linearization



produced (p) visual experimental data adjusted above

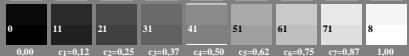
$$a_1=i_{08}, b_1=i_{04} \cdot a_1, b_2=i_{48}(1-b_1)+b_1, c_2=b_1, c_4=b_2, c_6=b_3$$

$$c_1=i_{02} \cdot b_1, c_3=i_{24}(b_2-b_1)+b_1, c_5=i_{46}(b_3-b_2)+b_2, c_7=i_{68}(1-b_3)+b_3$$

save 7 data above as text

save 9 data below as text

+0,04 ? +0,04 ? +0,04 ? +0,04 ? +0,04 ? +0,04 ? +0,04 ? +0,04 ? -0,04 ?



grey example
difference visible?



23

0,25 +0,06 ? adjust threshold
0,25 +0,00 ? no change

adjust and proof threshold of
the linearized output

restart with image 1