

<http://farbe.li.tu-berlin.de/iea9/iea910np.pdf> / .ps; only vector graphic VG;
 see separate images of this page: <http://farbe.li.tu-berlin.de/iea9/iea9.htm>

see similar files of the whole serie: <http://farbe.li.tu-berlin.de/ieas.htm>
 technical information: <http://farbe.li.tu-berlin.de> or <http://color.li.tu-berlin.de>

TUB registration: 20250201-iea9/iea910np.pdf / .ps
 application for evaluation and measurement of display or print output
 TUB material: code=th4ta

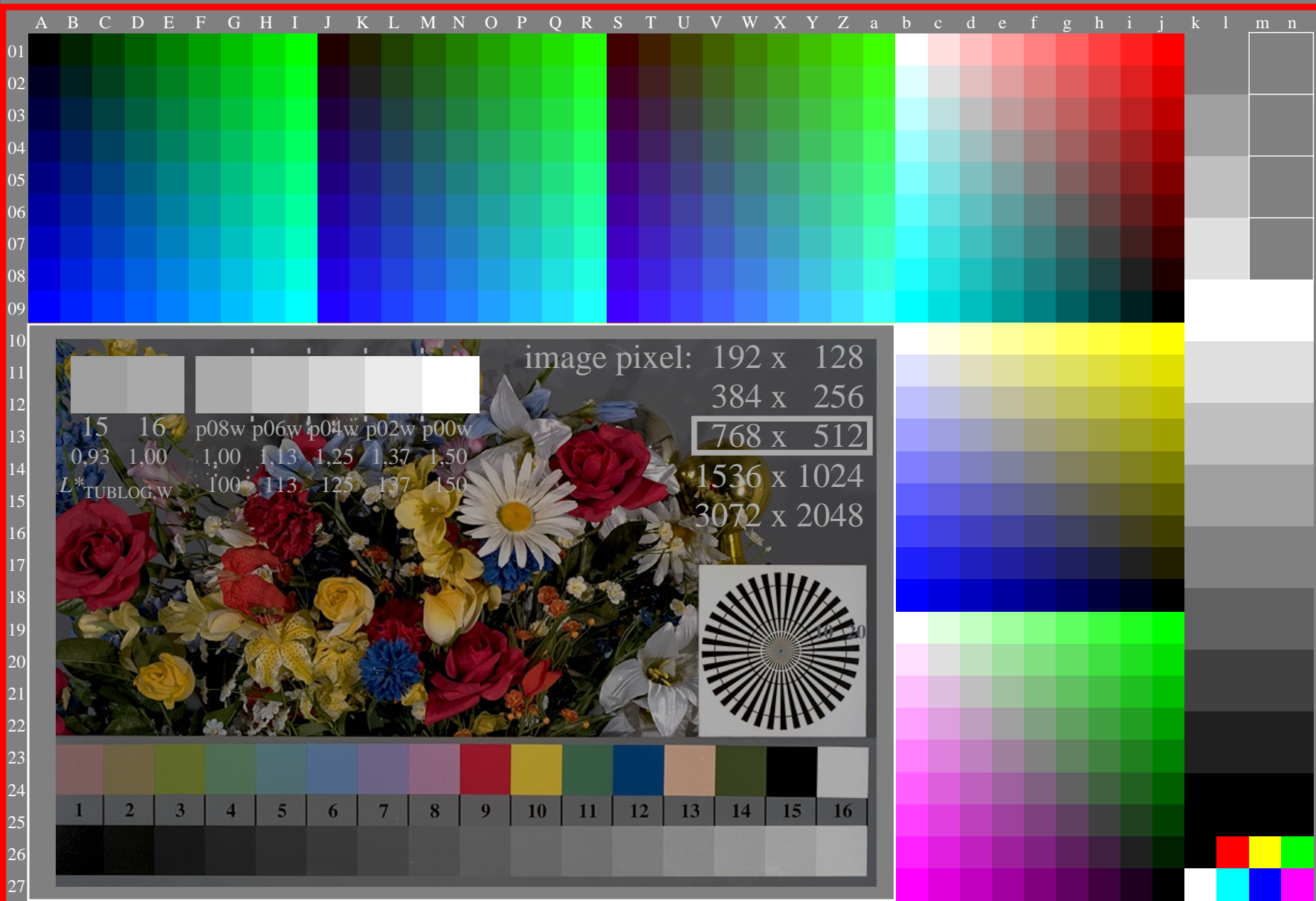


image pixel: 192 x 128
 384 x 256
 768 x 512
 1536 x 1024
 3072 x 2048

15 16 p08w p06w p04w p02w p00w
 0,93 1,00 1,00 1,13 1,25 1,37 1,50
 $L^*_{TUBLOG,W}$ 100 113 125 137 150

iea90-7n, gamma $g_a=3,600$, $g_p=1,500$,

iea90-7n

TUB-test chart iea9; Test charts with 5&9&16 step colour series for linearized display output
 Flower motif and 1080 colours according to ISO 9241-306; $0 \leq r, g, b^* \leq 1$ for display range N-P2

1=000700=F0