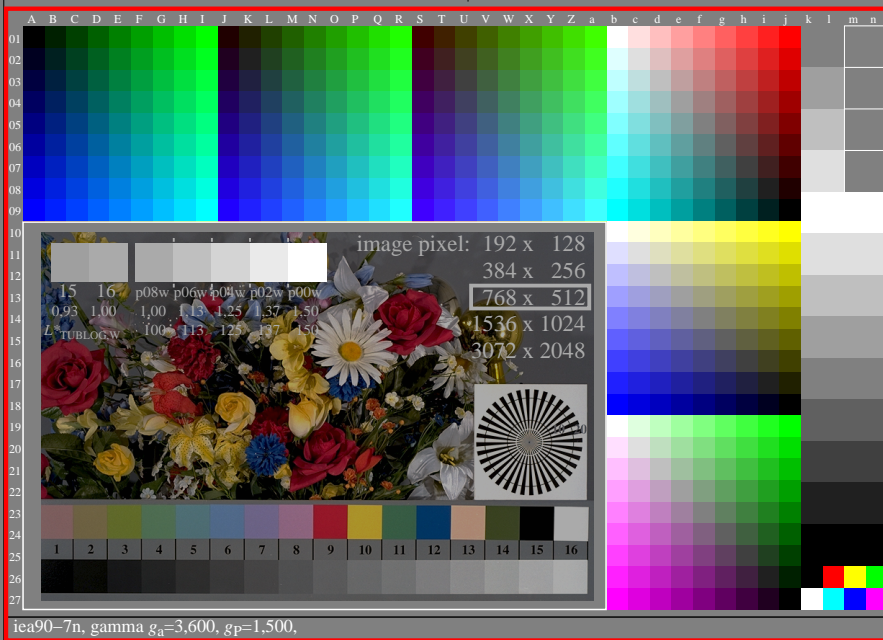


<http://farbe.li.tu-berlin.de/iea9/iea9l0n1.txt> / .ps; only vector graphic VG;  
see separate images of this page: <http://farbe.li.tu-berlin.de/iea9/iea9.htm>

see similar files of the whole series: <http://farbe.li.tu-berlin.de/iea9.htm>  
technical information: <http://farbe.li.tu-berlin.de> or <http://color.li.tu-berlin.de>

TUB registration: 2025/02/01-iea9/iea9l0n1.txt / .ps  
application for evaluation and measurement of display or print output

TUB material: code=thada



iea90-7n

TUB-test chart iea9; Test charts with 5&9&16 step colour series for linearized display output  
Flower motif and 1080 colours according to ISO 9241-306;  $0 <= rgb^* <= 1$  for display range N-P2