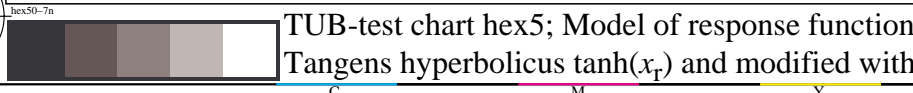
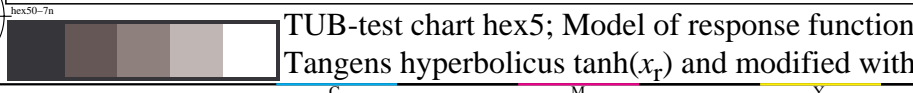
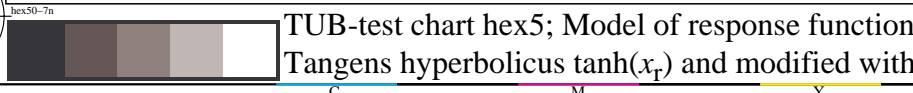
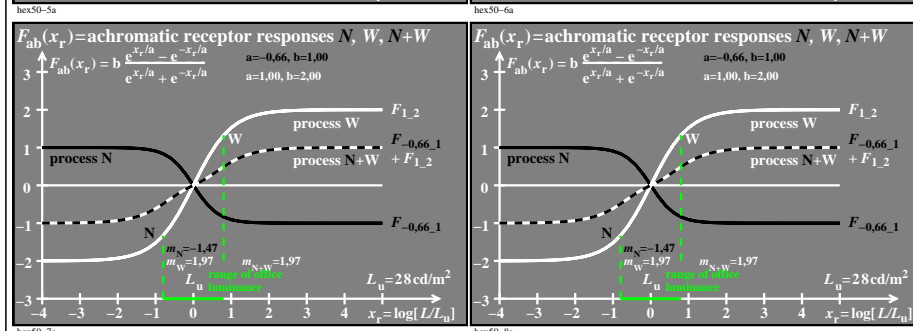
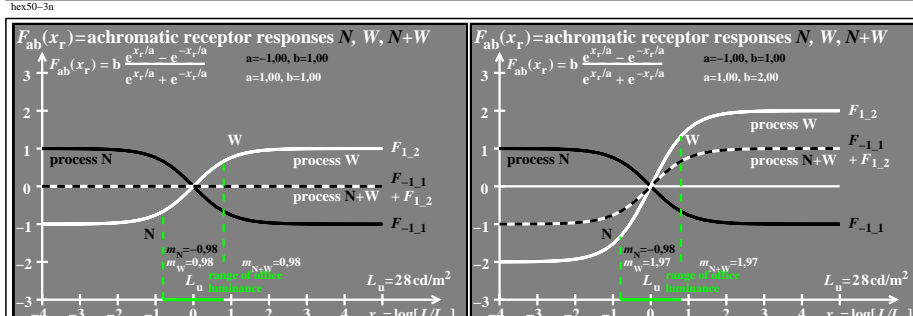
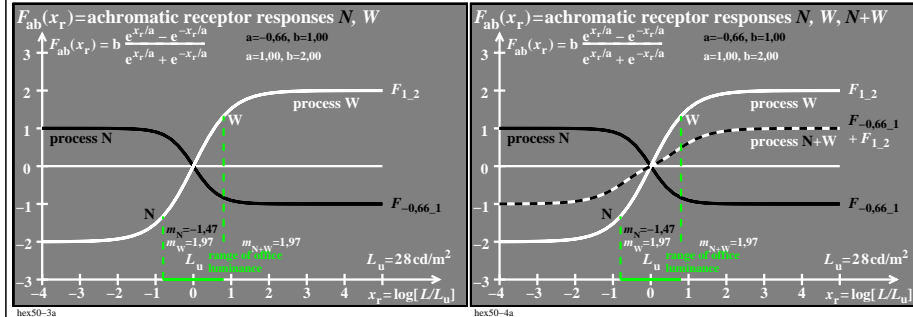
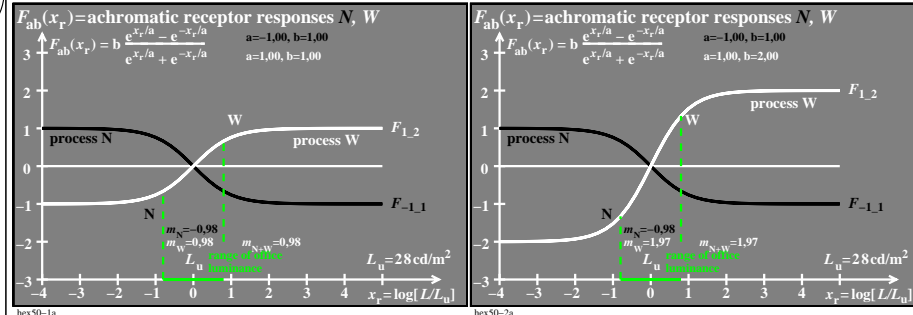


see similar files of the whole serie: <http://farbe.li.tu-berlin.de/hex5.htm>  
 technical information: <http://farbe.li.tu-berlin.de> OR <http://color.li.tu-berlin.de>

TUB registration: 20240301-hex5/hex510na.txt / .ps  
 application for evaluation and measurement of display or print output  
 TUB material: code=rhatha



TUB-test chart hex5; Model of response functions  $F_{ab}(x_r)$ , processes N, W, N+W  
 Tangens hyperbolicus  $\tanh(x_r)$  and modified with  $e^{\pm x_r/a}$  and  $10^{\pm x_r/a}$ ;  $a = -0.66$  &  $1.00$ ;  $a' = a \ln(10)$