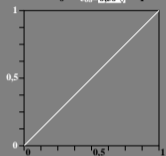


A choose of a value different "0.50" changes the grey sample and surround.
 Beginners often have difficulties to choose an appropriate value.
 Therefore it is recommended for beginners to proceed with image 2.
 After a restart of the experiment, a value different "0.50" may be used.

adjust visual equal difference for one of 3 steps



Output (9 steps)
 adjusted spacing
 $0 \leq r_{gb}^*_{out} \leq 1$



go to next image 2

one experimental value:
 e_{08}

equally spaced
 $0 \leq r_{gb}^*_{in} \leq 1$
 Input (9 steps)

heq20-5a, image 1, produce equal visual difference between Black N – Magenta Mn – Magenta M

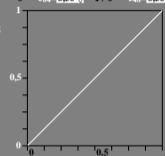
9 step series based only on the visual adjustment of image 1 with value "0.50" or different



adjust visual equal difference for two of 5 steps



Output (9 steps)
 adjusted spacing
 $0 \leq r_{gb}^*_{out} \leq 1$



go to next image 3

two experimental values:
 e_{04}, e_{48}

equally spaced
 $0 \leq r_{gb}^*_{in} \leq 1$
 Input (9 steps)

heq20-6a, image 2, produce equal visual difference between two of five steps

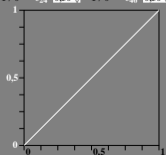
9 step series based only on the visual adjustment of image 1 with value "0.50" or different



adjust visual equal difference for four of 9 steps



Output (9 steps)
 adjusted spacing
 $0 \leq r_{gb}^*_{out} \leq 1$



go to next image 4

four experimental values:
 $e_{02}, e_{24}, e_{46}, e_{68}$

save 7 data above as text

equally spaced
 $0 \leq r_{gb}^*_{in} \leq 1$
 Input (9 steps)

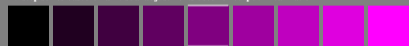
heq20-7a, image 3, produce equal visual difference between four of nine steps

heq20-7n

9 step series based only on the visual adjustment of image 1 with value "0.50" or different



9 step series based on all visual adjustments used for output linearization

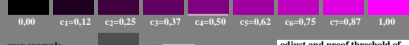


calculation with visual experimental (e) data adjusted above

$a_1=e_{08}, b_1=e_{04}^*a_1, b_3=e_{48}(1-b_2)+b_2, c_2=b_1, c_4=b_2, c_6=b_3$
 $c_1=e_{02}^*b_1, c_3=e_{24}(b_1-b_2)+b_1, c_5=e_{46}(b_1-b_2)+b_2, c_7=e_{68}(1-b_3)+b_3$

save 7 data above as text

save 9 data below as text



grey example
 difference visible?

0,25 +0,06 adjust threshold
 0,25 +0,00 no change

adjust and proof threshold
 of the linearized output

restart with image 1

heq20-8a, image 4, adjust visual threshold (+0,04?) of 9 steps; all equal?