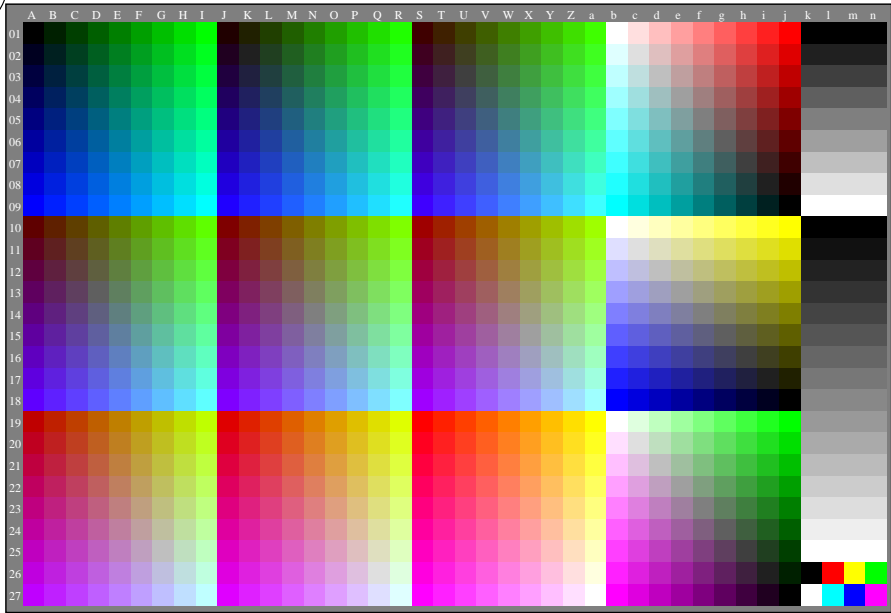
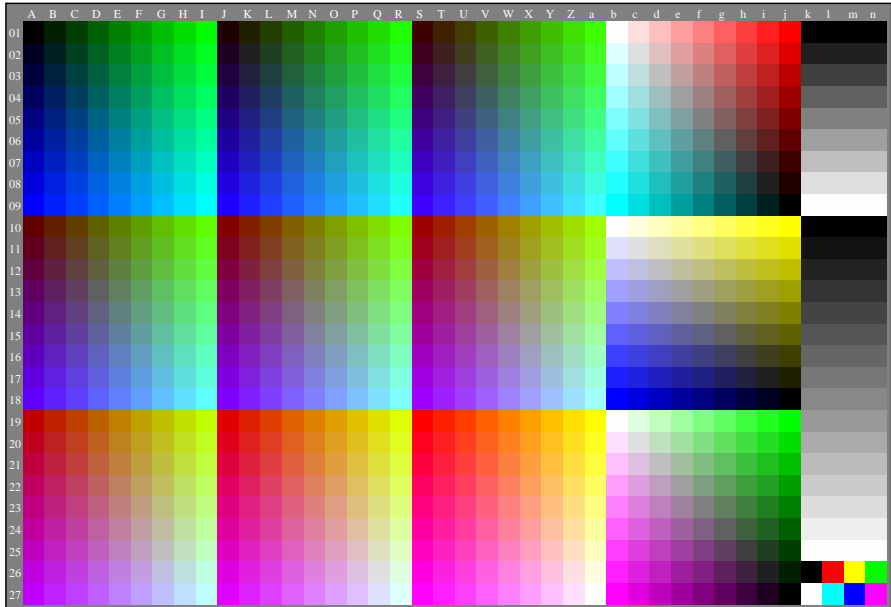


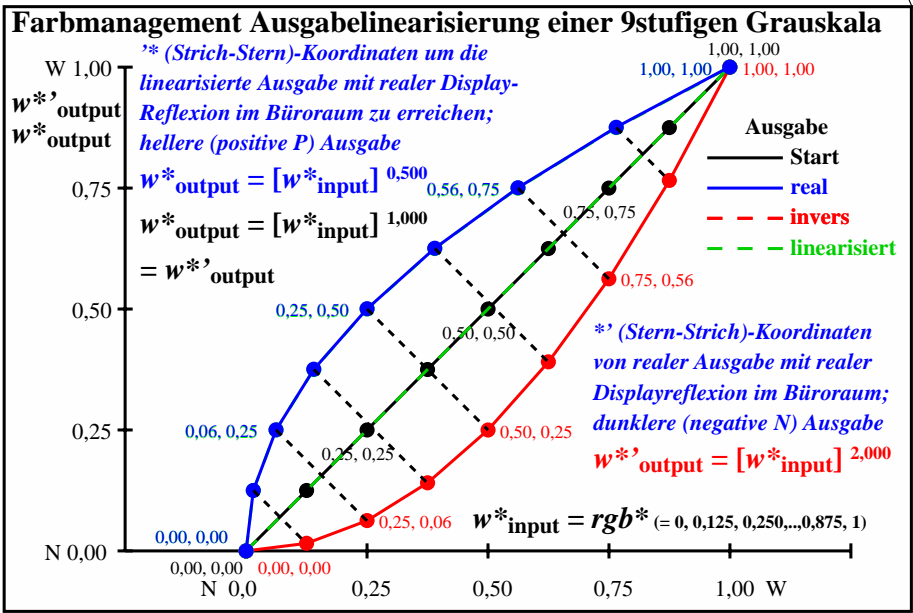
Technische Information: <http://farbe.li.tu-berlin.de> oder <http://color.li.tu-berlin.de>



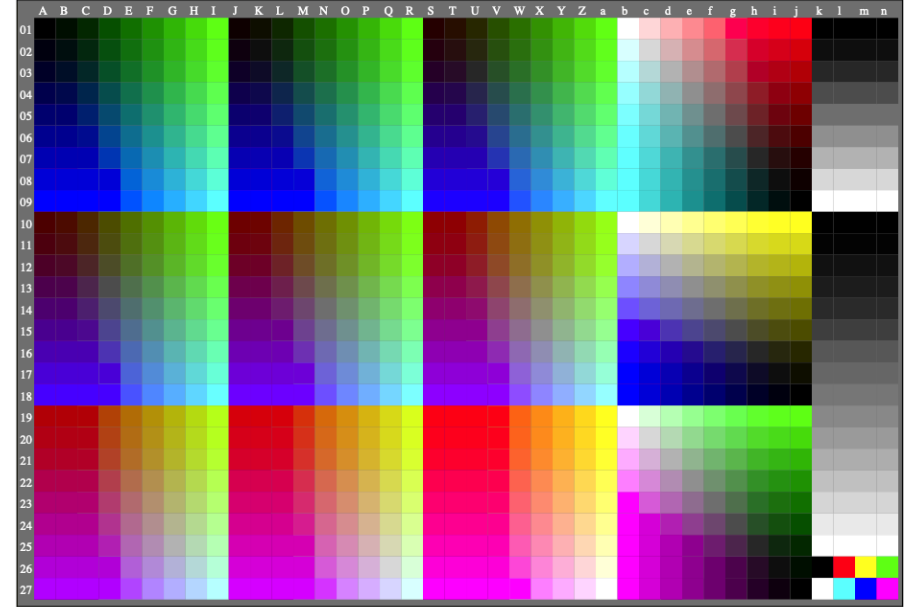
ggy80-3n, Gammawerte: $g_{rel}=1,000$, $g_{IEC-sRGB}=2,4$, $g_a=2,400$, nur rgb^* & w^* -Daten, 1080 Farben



ggy80-7n, Gammawerte: $g_{rel}=0,500$, $g_{IEC-sRGB}=2,4$, $g_a=1,200$, nur rgb^* & w^* -Daten, 1080 Farben



ggy81-3n, Gammawerte: $g_{(rel)} = 0,5$ (blau) und $2,0$ (rot), linearisiert (gr n)



gey01-7a, Gamma values: $g_{rel}=2,000$, $g_{IEC-sRGB}=2,4$, $g_a=4,800$, only rgb^* & w^* data, 1080 colours, pixel graphic eps

TUB-Registrierung: 20240901-ggy8/ggy810np.pdf / .ps
 Anwendung für Beurteilung und Messung von Display- oder Druck-Ausgabe
 TUB-Material: Code=rha4ta