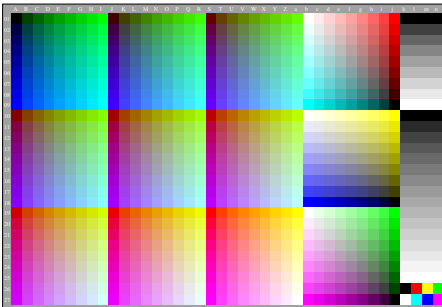
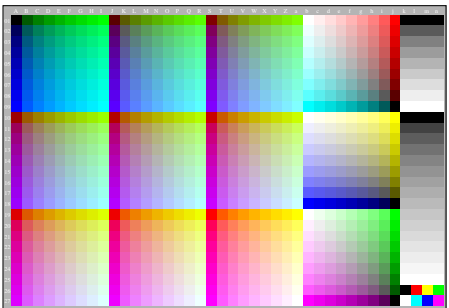


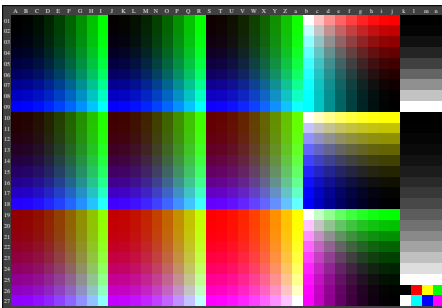
ggy00-3n, Gammawerte: $g_{red}=1,000$, $g_{IEC-ARGB}=2,4$, $g_a=2,400$, nur rgb^* & w^* -Daten, 1080 Farben



ggy01-3n, Gammawerte: $g_{red}=0,666$, $g_{IEC-ARGB}=2,4$, $g_a=1,598$, nur rgb^* & w^* -Daten, 1080 Farben



ggy00-7n, Gammawerte: $g_{red}=0,500$, $g_{IEC-ARGB}=2,4$, $g_a=1,200$, nur rgb^* & w^* -Daten, 1080 Farben



ggy01-7n, Gammawerte: $g_{red}=2,000$, $g_{IEC-ARGB}=2,4$, $g_a=4,800$, nur rgb^* & w^* -Daten, 1080 Farben