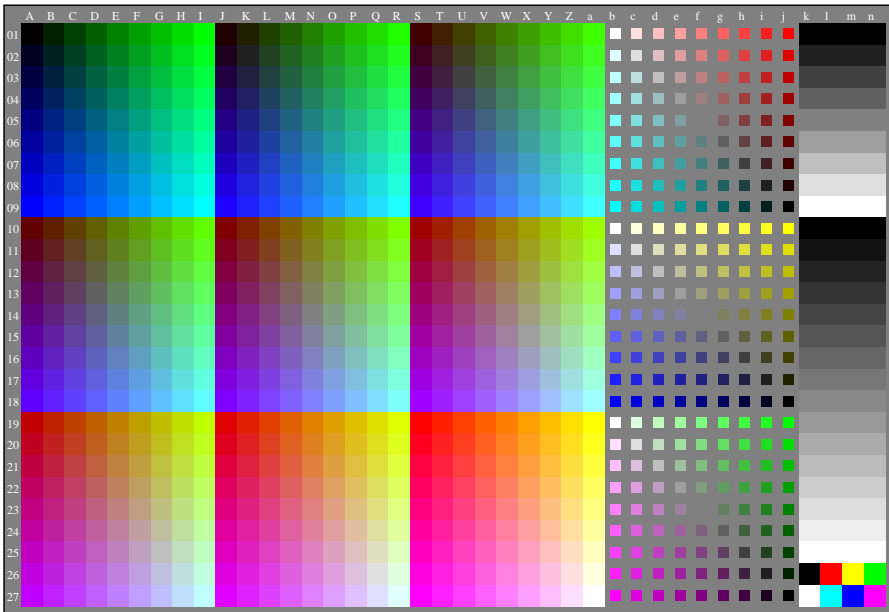
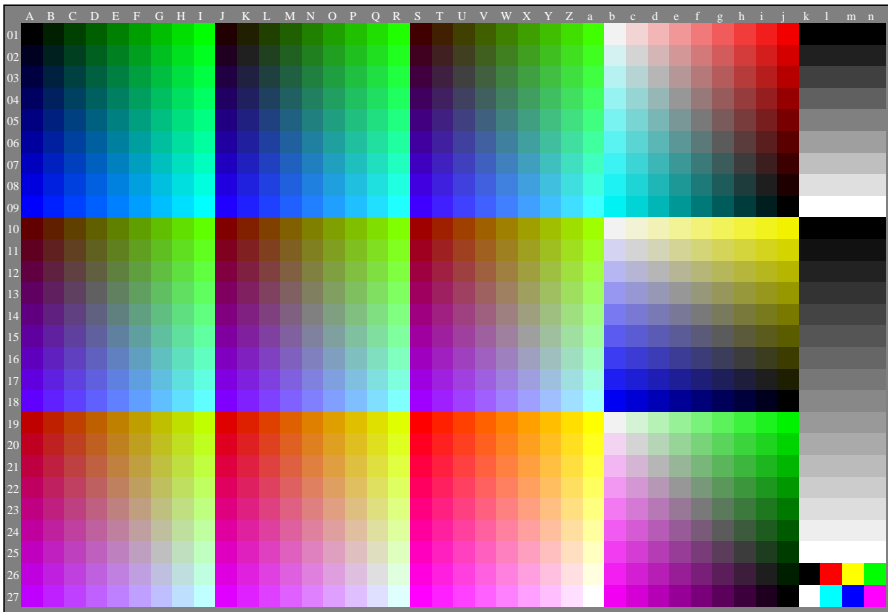


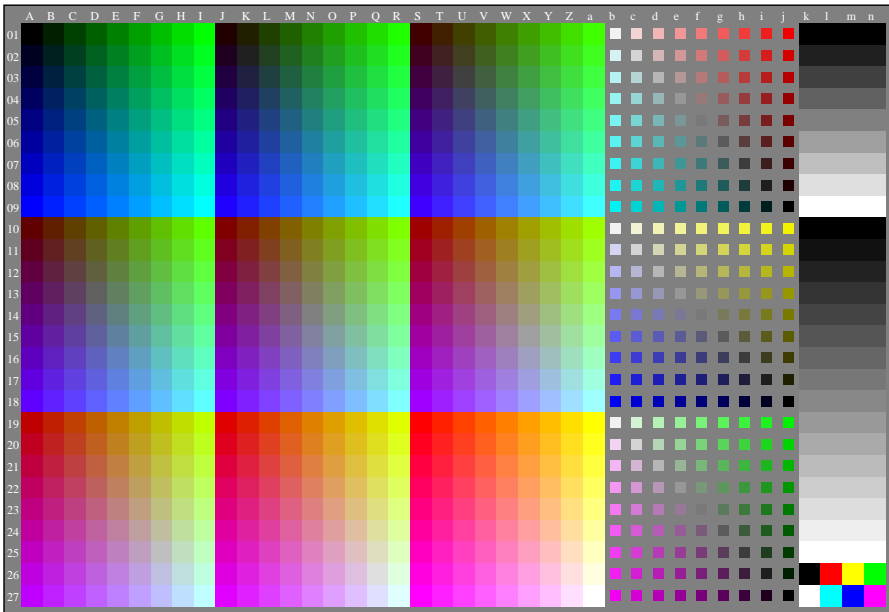
ggu80-3n, Gammawerte: $g_{rel}=1,000$, $g_{IEC-sRGB}=2,4$, $g_a=2,400$, nur rgb^* & w^* -Daten, 1080 Farben, $g_R=1,000$, $colorm=1$, $kk=0$, n



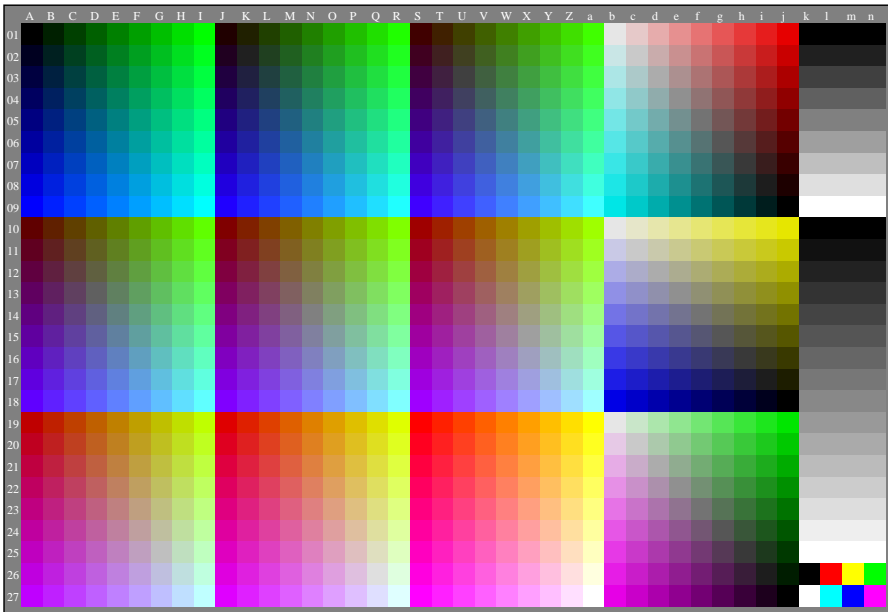
ggu80-3n, Gammawerte: $g_{rel}=1,000$, $g_{IEC-sRGB}=2,4$, $g_a=2,400$, nur rgb^* & w^* -Daten, 1080 Farben, $g_R=1,000$, $color_m=1$, $kk=0$, n



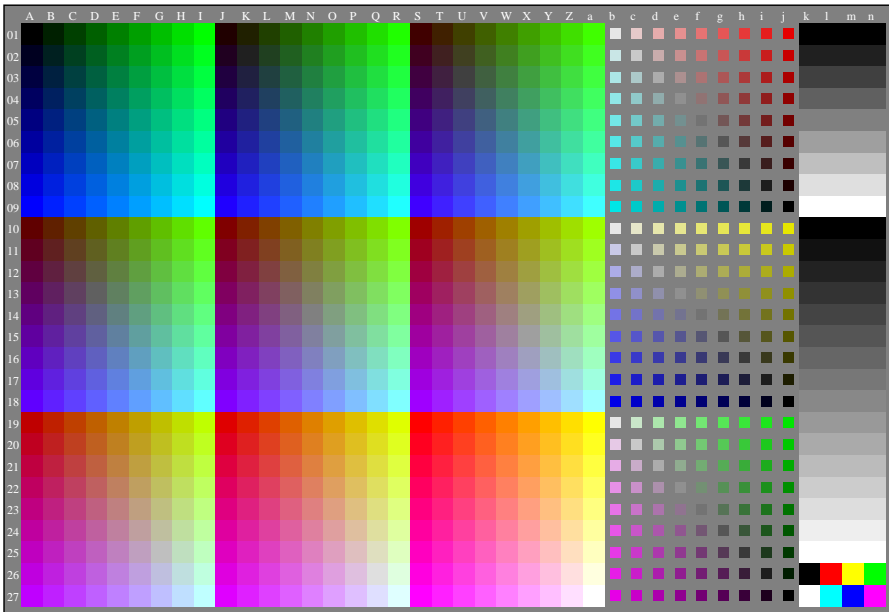
ggu80-3n, Gammawerte: $g_{rel}=1,000$, $g_{IEC-sRGB}=2,4$, $g_a=2,400$, nur rgb^* & w^* -Daten, 1080 Farben, $g_R=0,950$, $colorm=1$, $kk=1$, n



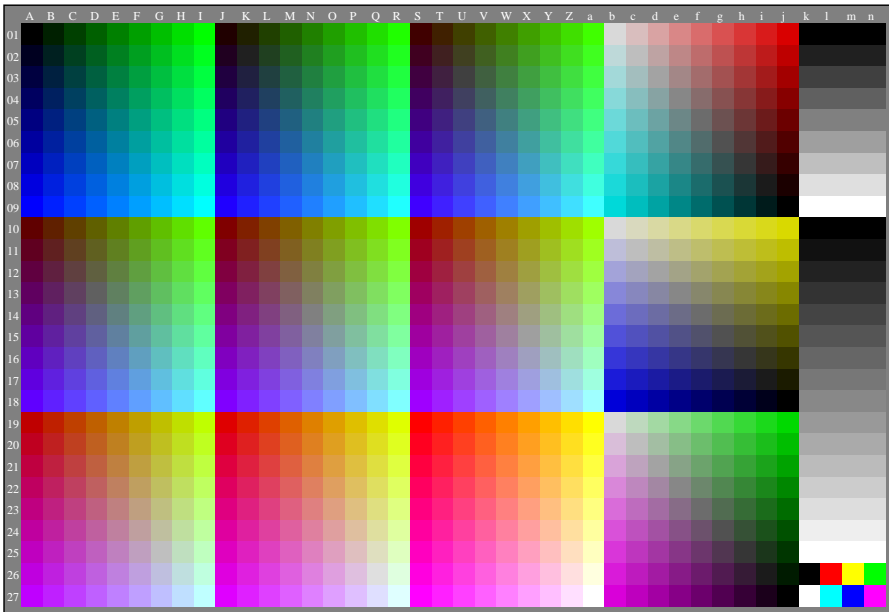
ggu80-3n, Gammawerte: $g_{rel}=1,000$, $g_{IEC-sRGB}=2,4$, $g_a=2,400$, nur rgb^* & w^* -Daten, 1080 Farben, $g_R=0,950$, $colorm=1$, $kk=1$, n



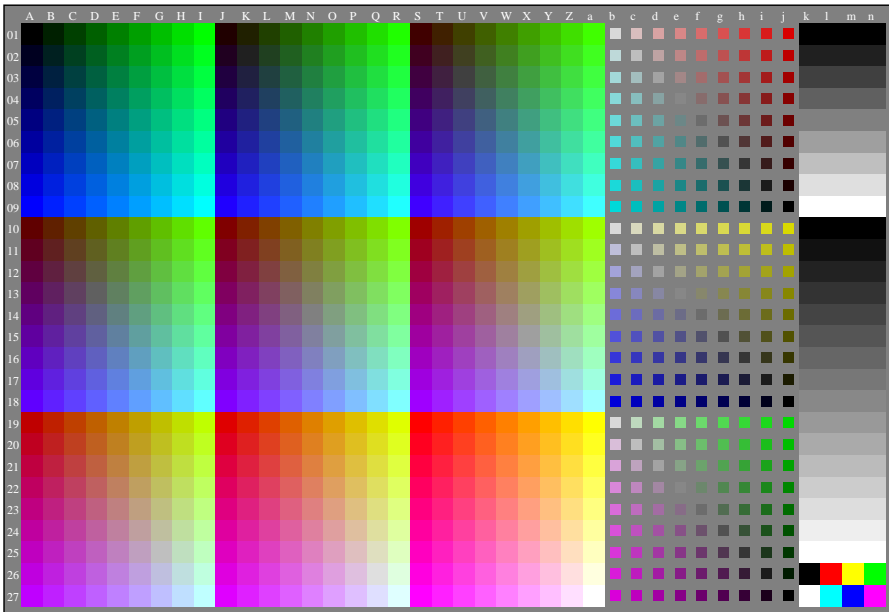
ggu80-3n, Gammawerte: $g_{rel}=1,000$, $g_{IEC-sRGB}=2,4$, $g_a=2,400$, nur rgb^* & w^* -Daten, 1080 Farben, $g_R=0,900$, $colorm=1$, $kk=2$, n



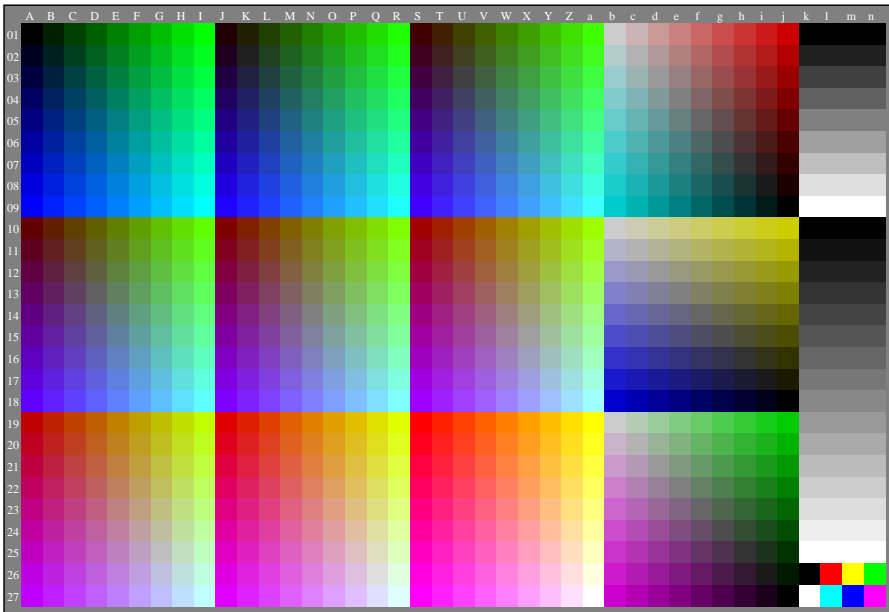
ggu80-3n, Gammawerte: $g_{rel}=1,000$, $g_{IEC-sRGB}=2,4$, $g_a=2,400$, nur rgb^* & w^* -Daten, 1080 Farben, $g_R=0,900$, $color_m=1$, $kk=2$, n



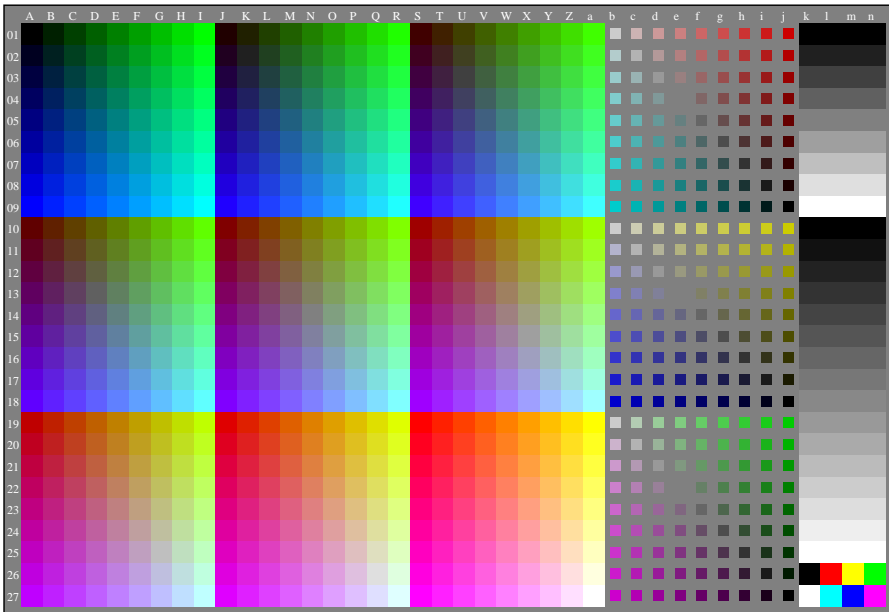
ggu80-3n, Gammawerte: $g_{rel}=1,000$, $g_{IEC-sRGB}=2,4$, $g_a=2,400$, nur rgb^* & w^* -Daten, 1080 Farben, $g_R=0,850$, $colorm=1$, $kk=3$, n



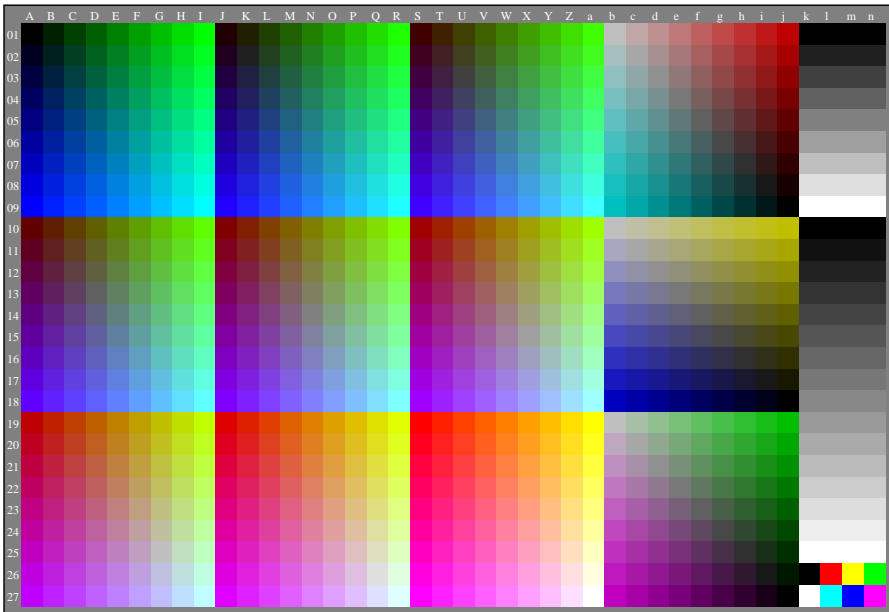
ggu80-3n, Gammawerte: $g_{rel}=1,000$, $g_{IEC-sRGB}=2,4$, $g_a=2,400$, nur rgb^* & w^* -Daten, 1080 Farben, $g_R=0,850$, $colorm=1$, $kk=3$, n



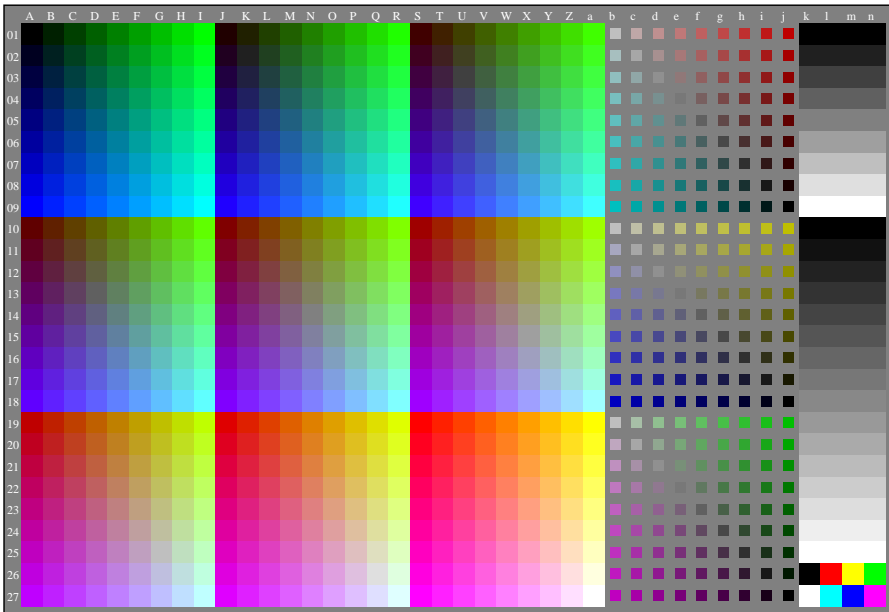
ggu80-3n, Gammawerte: $g_{rel}=1,000$, $g_{IEC-sRGB}=2,4$, $g_a=2,400$, nur rgb^* & w^* -Daten, 1080 Farben, $g_R=0,800$, $colorm=1$, $kk=4$, n



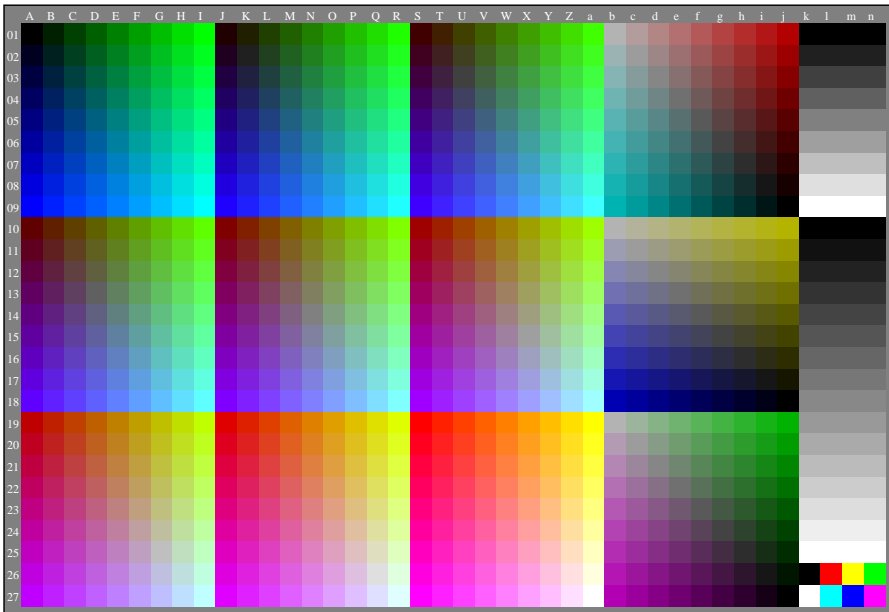
ggu80-3n, Gammawerte: $g_{rel}=1,000$, $g_{IEC-sRGB}=2,4$, $g_a=2,400$, nur rgb^* & w^* -Daten, 1080 Farben, $g_R=0,800$, $colorm=1$, $kk=4$, n



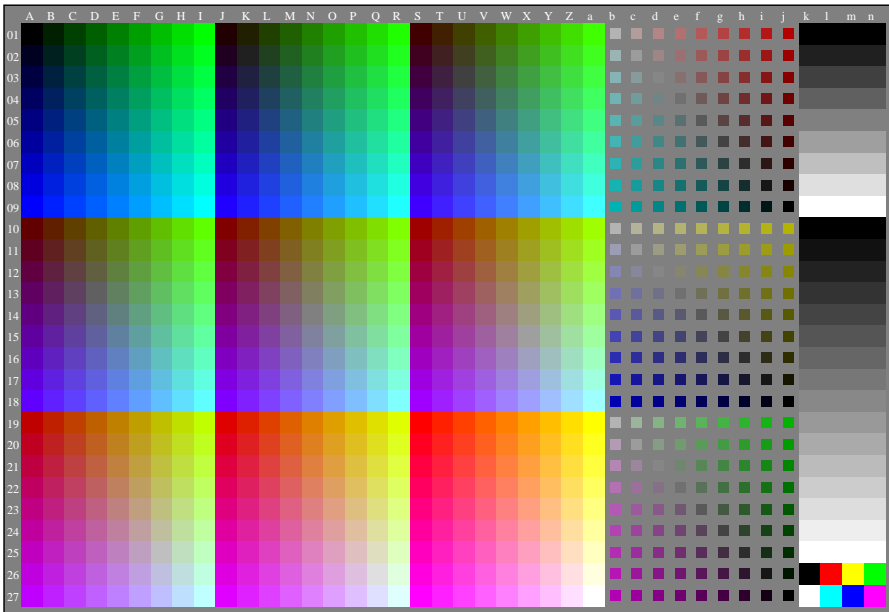
ggu80-3n, Gammawerte: $g_{rel}=1,000$, $g_{IEC-sRGB}=2,4$, $g_a=2,400$, nur rgb^* & w^* -Daten, 1080 Farben, $g_R=0,750$, $colorm=1$, $kk=5$, n



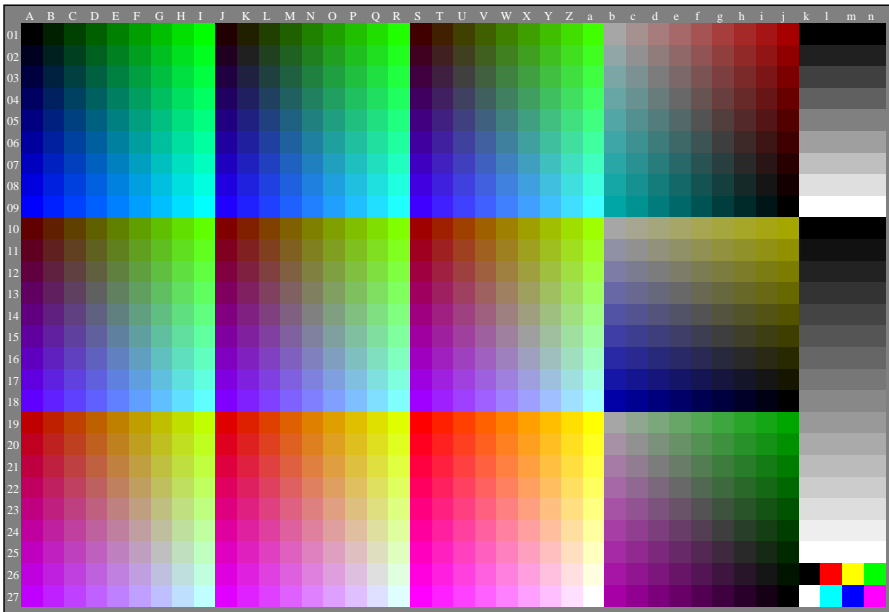
ggu80-3n, Gammawerte: $g_{rel}=1,000$, $g_{IEC-sRGB}=2,4$, $g_a=2,400$, nur rgb^* & w^* -Daten, 1080 Farben, $g_R=0,750$, $colorm=1$, $kk=5$, n



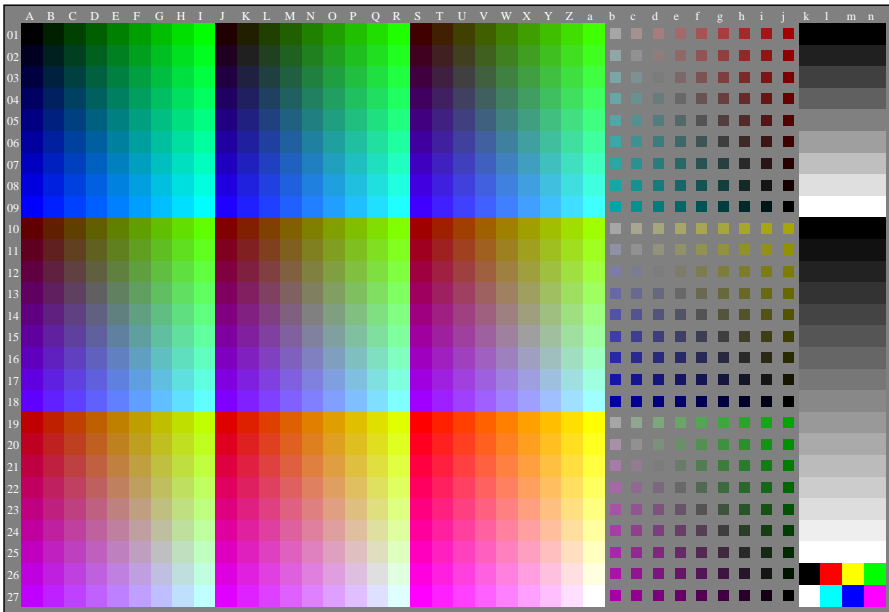
ggu80-3n, Gammawerte: $g_{rel}=1,000$, $g_{IEC-sRGB}=2,4$, $g_a=2,400$, nur rgb^* & w^* -Daten, 1080 Farben, $g_R=0,700$, $colorm=1$, $kk=6$, n



ggu80-3n, Gammawerte: $g_{rel}=1,000$, $g_{IEC-sRGB}=2,4$, $g_a=2,400$, nur rgb^* & w^* -Daten, 1080 Farben, $g_R=0,700$, $colorm=1$, $kk=6$, n



ggu80-3n, Gammawerte: $g_{rel}=1,000$, $g_{IEC-sRGB}=2,4$, $g_a=2,400$, nur rgb^* & w^* -Daten, 1080 Farben, $g_R=0,650$, $colorm=1$, $kk=7$, n



ggu80-3n, Gammawerte: $g_{rel}=1,000$, $g_{IEC-sRGB}=2,4$, $g_a=2,400$, nur rgb^* & w^* -Daten, 1080 Farben, $g_R=0,650$, $colorm=1$, $kk=7$, n