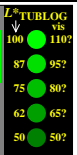
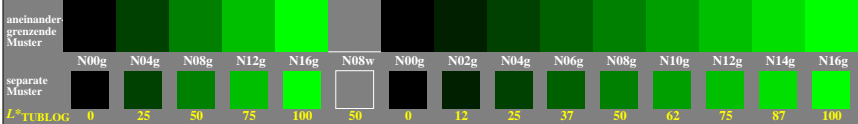


5/9 Farbstufen: Schwarz N00g – Schwarz N16g = Grün G

0, 125, 250, 375, 500, 625, 750, 875, 1000

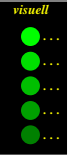
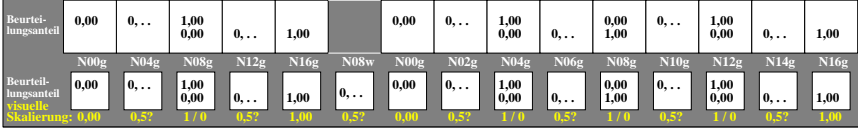
Schwarz N00g – Schwarz N16g = Grün G



5/9 Farbstufen: Schwarz N00g – Schwarz N16g = Grün G

0, 125, 250, 375, 500, 625, 750, 875, 1000

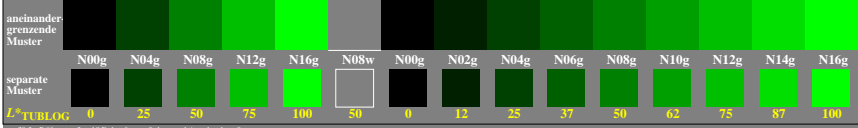
Schwarz N00g – Schwarz N16g = Grün G



5/9 Farbstufen: Schwarz N00g – Schwarz N16g = Grün G

0, 125, 250, 375, 500, 625, 750, 875, 1000

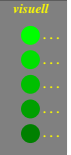
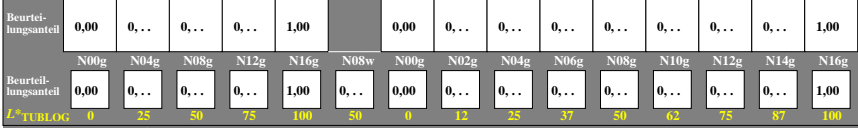
Schwarz N00g – Schwarz N16g = Grün G



5/9 Farbstufen: Schwarz N00g – Schwarz N16g = Grün G

0, 125, 250, 375, 500, 625, 750, 875, 1000

Schwarz N00g – Schwarz N16g = Grün G



Siehe ähnliche Dateien der ganzen Serie: <http://farbe.li.tu-berlin.de/ggg2.htm>
 Technische Information: <http://farbe.li.tu-berlin.de> oder <http://color.li.tu-berlin.de>

TUB-Registrierung: 20240601-ggg2/ggg201n1.txt /ps
 Anwendung für Beurteilung und Messung von Display- oder Druck-Ausgabe

TUB-Material: Code=th4ta