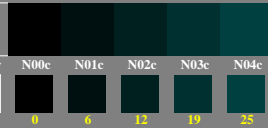
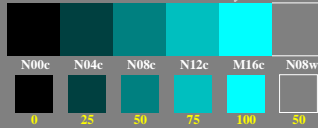
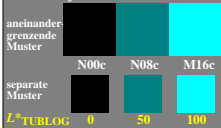


5/9 Farbstufen: $N00c - N16c = C$

0, 125, 250, 375, 500, 625, 750, 875, 1000
 Schwarz N00c – Schwarz N16c = Cyan C

Schwarz N00c – Schwarz N04c

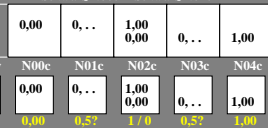
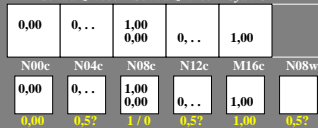
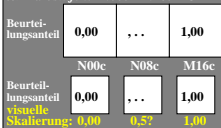


ggb40-1a, Prüfmuster: 3 und 265 Farbstufen, exp0=1, exp1=1, inv=1, schart=0

5/9 Farbstufen: $N00c - N16c = C$

0, 125, 250, 375, 500, 625, 750, 875, 1000
 Schwarz N00c – Schwarz N16c = Cyan C

Schwarz N00c – Schwarz N04c

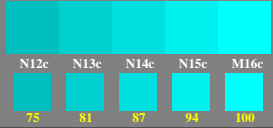
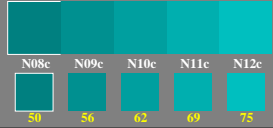
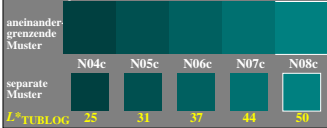


ggb40-3a, Bewertungsbogen: 3 und 265 Farbstufen, exp0=1, exp1=1, inv=1, schart=1

5/9 Farbstufen: Schwarz N04c – Schwarz N08c

0, 125, 250, 375, 500, 625, 750, 875, 1000
 Schwarz N08c – Schwarz N12c

Schwarz N12c – Schwarz N16c

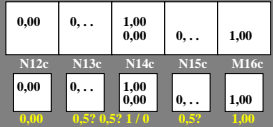
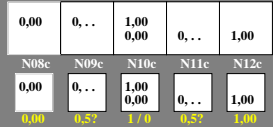
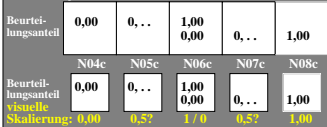


ggb40-5a, Prüfmuster: 3x5 Farbstufen, exp0=1, exp1=1, inv=1, schart=0

5/9 Farbstufen: Schwarz N04c – Schwarz N08c

0, 125, 250, 375, 500, 625, 750, 875, 1000
 Schwarz N08c – Schwarz N12c

Schwarz N12c – Schwarz N16c



ggb40-7a, Bewertungsbogen: 3x5 Farbstufen, exp0=1, exp1=1, inv=1, schart=1

Siehe ähnliche Dateien der ganzen Serie: <http://farbe.li.tu-berlin.de/ggbs.htm>
 Technische Information: <http://farbe.li.tu-berlin.de> oder <http://color.li.tu-berlin.de>

TUB-Registrierung: 20240601-ggb4/ggb40n1.txt / .ps
 Anwendung für Beurteilung und Messung von Display- oder Druck-Ausgabe
 TUB-Material: Code=th4ta