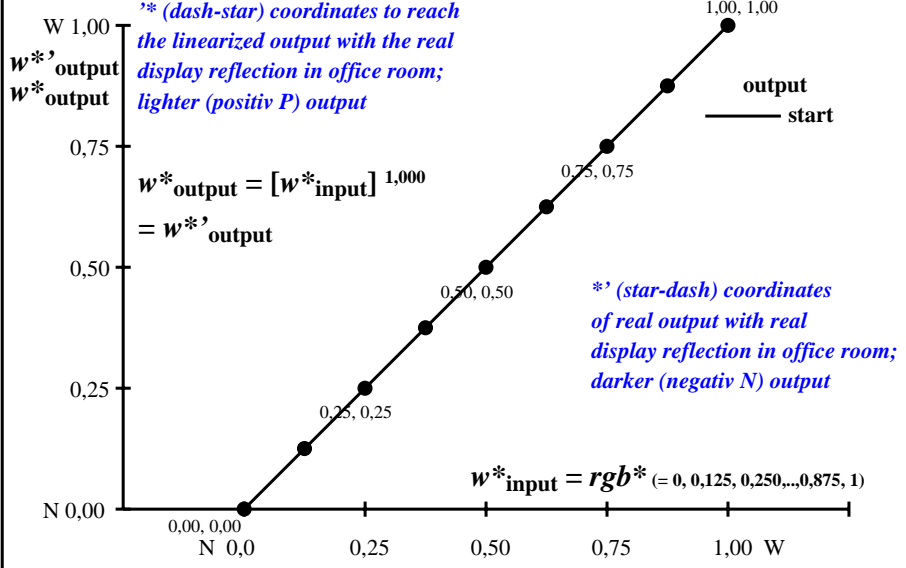
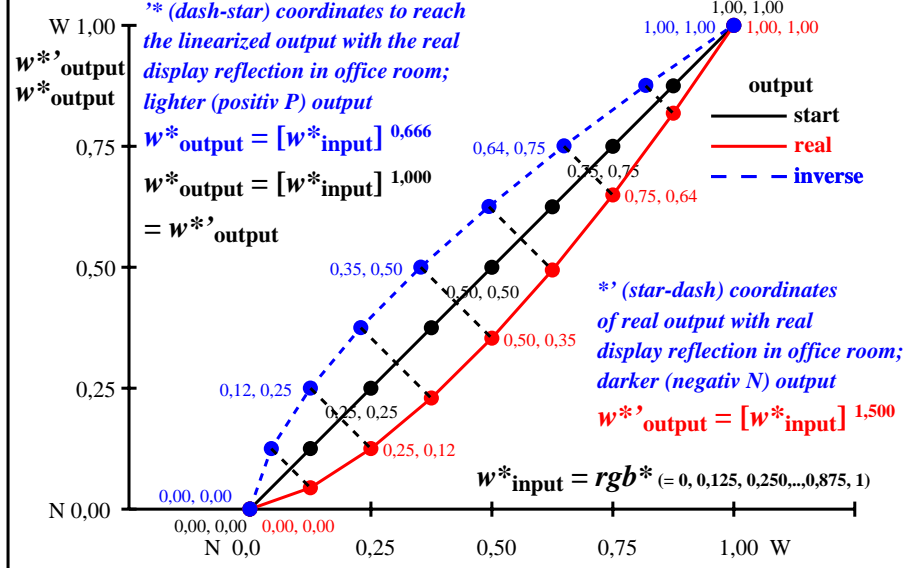


Colour management for output linearization of a 9 step grey scale

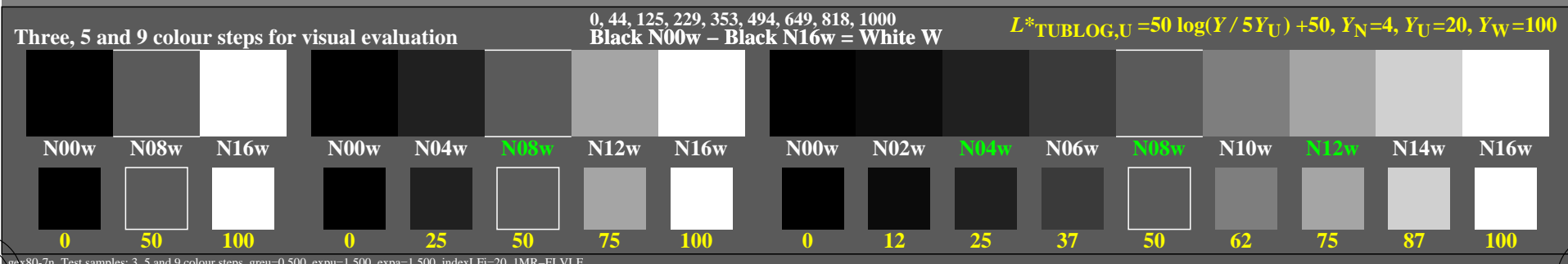
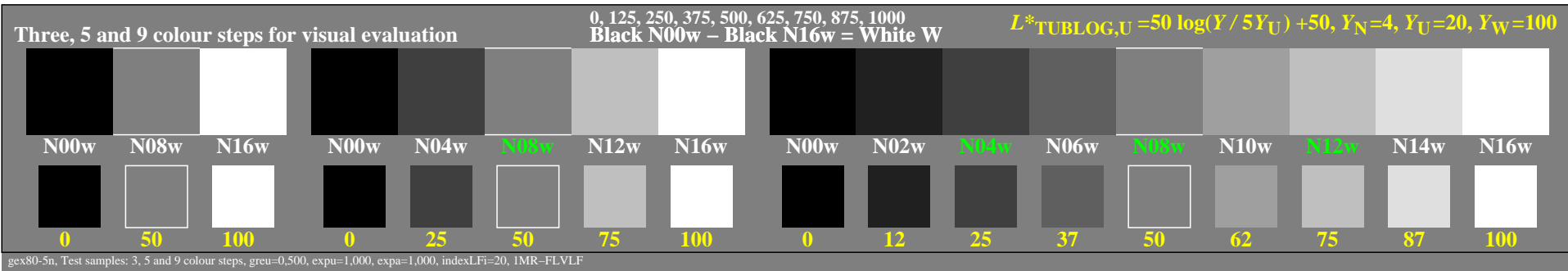


Colour management for output linearization of a 9 step grey scale



gex80-3n

gex81-3n



TUB-test chart gex8; Linearization code *IMR-000LF* and Gamma (76 lines) in (1/3/5/7)n
 Gamma=1 (start), 1,5 (real), 0,667 (inverse); linearisation: Gamma=1(5n), 0,667(7n,d=N06w->N06w)

see similar files of the whole serie: <http://farbe.li.tu-berlin.de/gex8.htm>
 technical information: <http://farbe.li.tu-berlin.de> OR <http://color.li.tu-berlin.de>

TUB registration: 20240801-gex8/gex810np.pdf / .ps
 application for evaluation and measurement of display or print output
 TUB material: code=rhadata