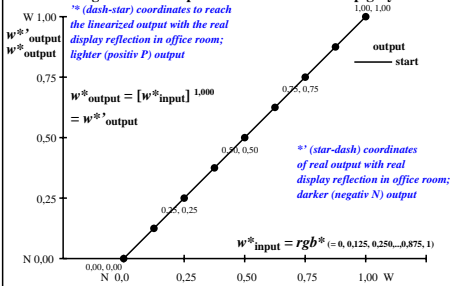
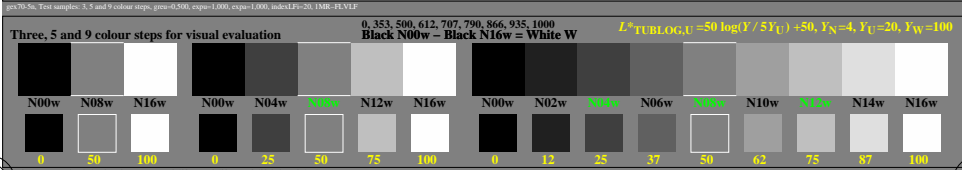
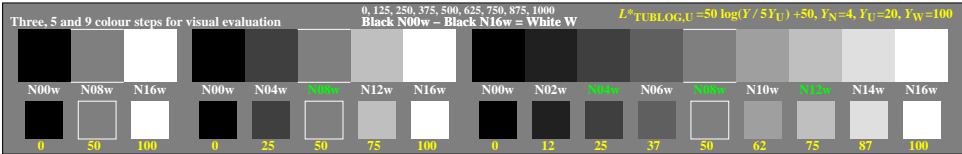
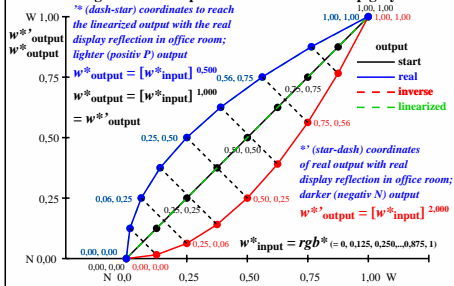


### Colour management for output linearization of a 9 step grey scale



### Colour management for output linearization of a 9 step grey scale



TUB-test chart gex7; Linearization code *IMR-000LF* and Gamma (76 lines) in (1/3/5/7)n  
 Gamma=1 (start), 0,5 (real), 2 (inverse); linearisation: Gamma=1(5n), 2(7n,U=N12w->N08w)

see similar files of the whole serie: <http://farbe.li.tu-berlin.de/gexx.htm>  
 technical information: <http://farbe.li.tu-berlin.de> or <http://color.li.tu-berlin.de>

TUB registration: 20240801\_gex7/gex7l0n1.txt / .ps  
 application for evaluation and measurement of display or print output

TUB material: code=mat4a