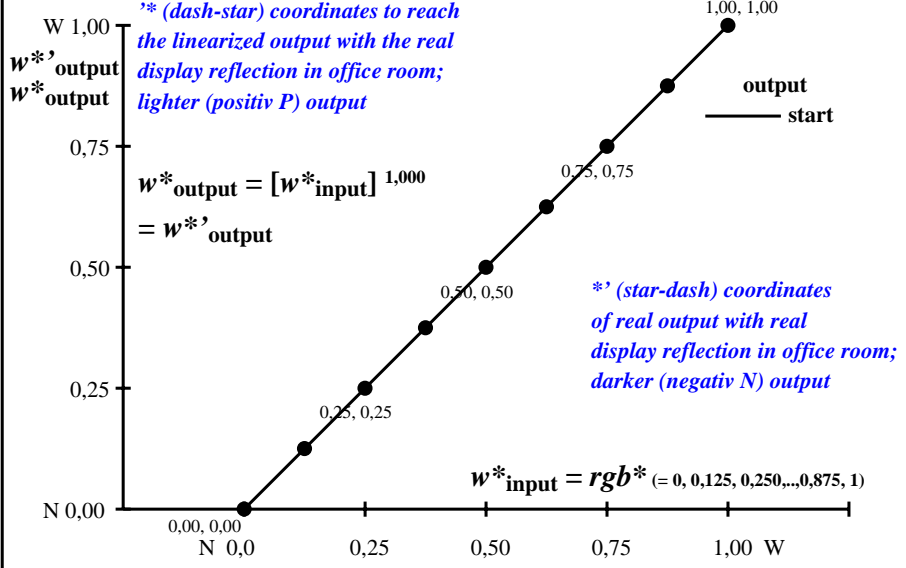
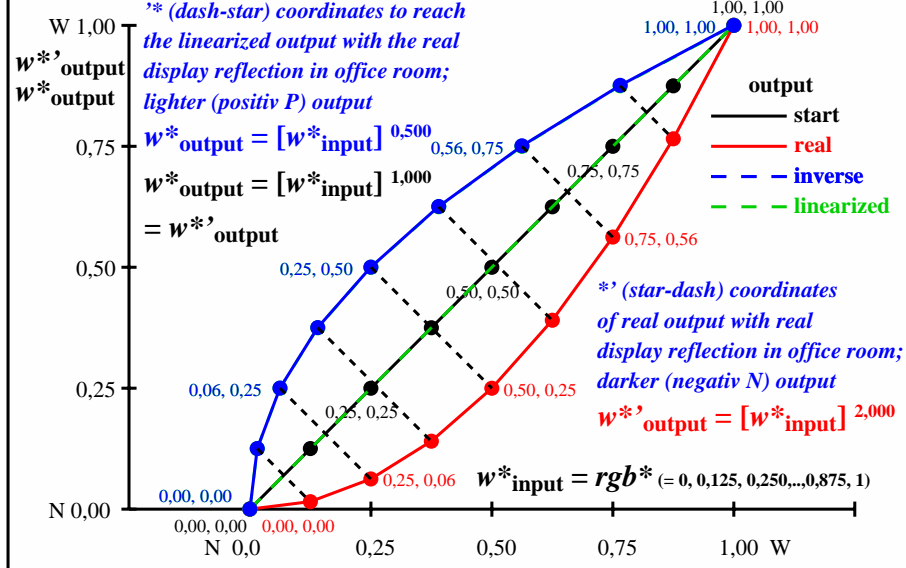


### Colour management for output linearization of a 9 step grey scale

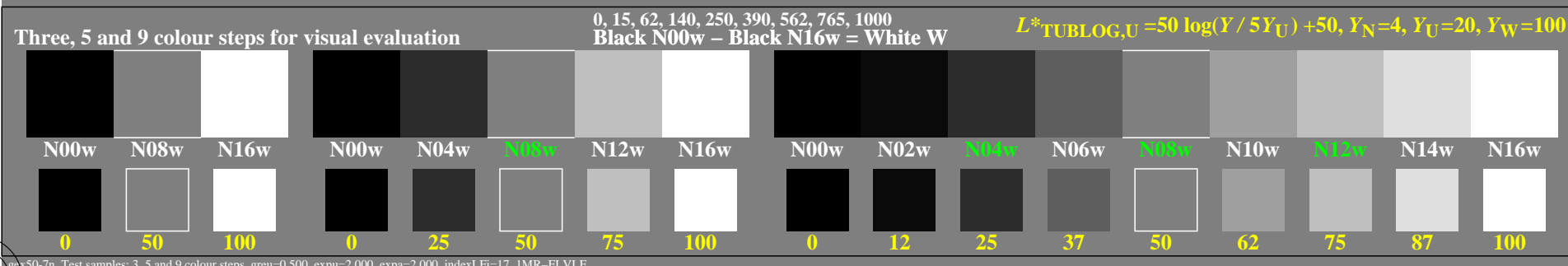
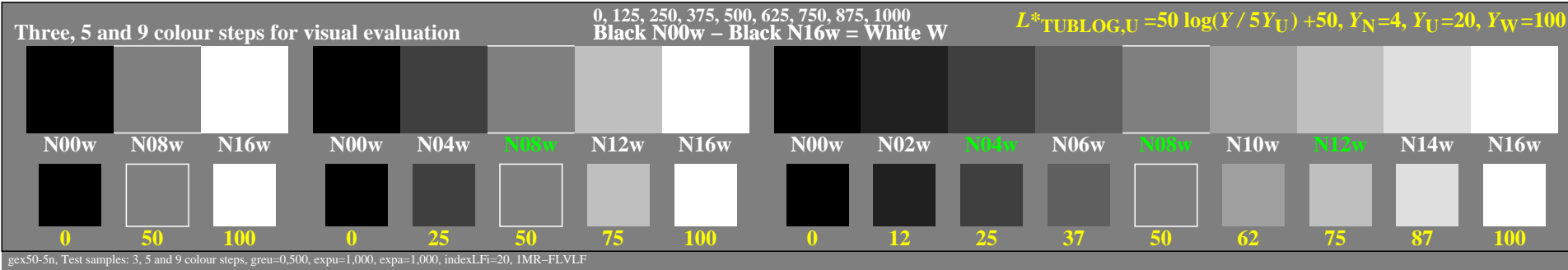


### Colour management for output linearization of a 9 step grey scale



gex50-3n

gex51-3n



TUB-test chart gex5; Linearization code *IMR-000LF* and Gamma (76 lines) in (1/3/5/7)n  
 Gamma=1 (start), 2 (real) and 0,5 (inverse); linearisation: Gamma=1(5n), 0,5(7n,U=N04w=>N08w)