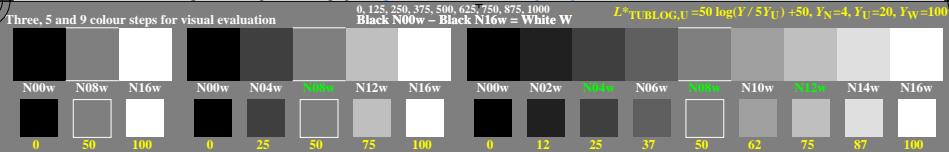
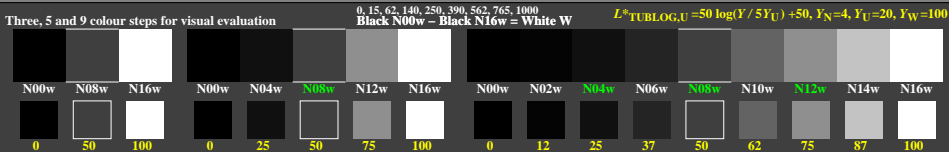


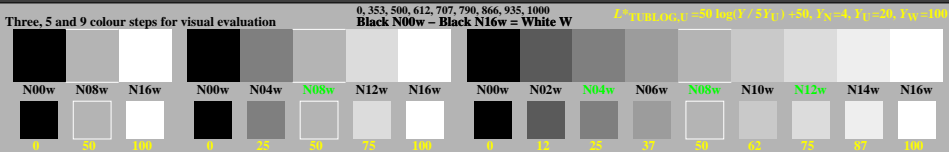
<http://farbe.li.tu-berlin.de/gex0/gex0l0n1.txt> /ps; only vector graphic VG; start output  
see separate images of this page: <http://farbe.li.tu-berlin.de/gex0.htm>



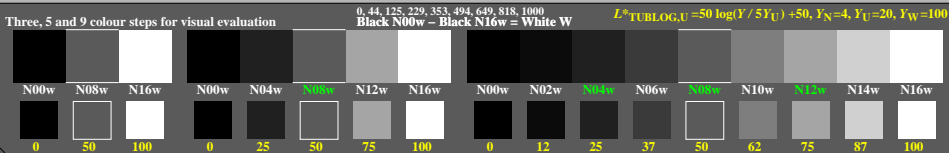
gex00-1a, Test samples: 3, 5 and 9 colour steps, grea=0.500, expa=1.000, indexLFi=20, IMR-FLVLF



gex00-1b, Test samples: 3, 5 and 9 colour steps, grea=0.500, expa=2.000, indexLFi=20, IMR-FLVLF



gex00-3a, Test samples: 3, 5 and 9 colour steps, grea=0.500, expa=0.500, indexLFi=20, IMR-FLVLF



gex00-7a, Test samples: 3, 5 and 9 colour steps, grea=0.500, expa=1.500, indexLFi=20, IMR-FLVLF

TUB-test chart gex0; Linearization code *IMR-000LF* and Gamma (76 lines) in (1/3/5/7)n  
Gamma=1, 2, 0.5, 1.5; series N-W with 3, 5, 9 steps; U: (1/3/5/7/9)n=N(08/04/12/06)w

see similar files of the whole serie: <http://farbe.li.tu-berlin.de/gexx.htm>  
technical information: <http://farbe.li.tu-berlin.de/> or <http://color.li.tu-berlin.de>

TUB registration: 20240801-gex0/gex0l0n1.txt /ps  
application for evaluation and measurement of display or print output

TUB material: code=rhatha