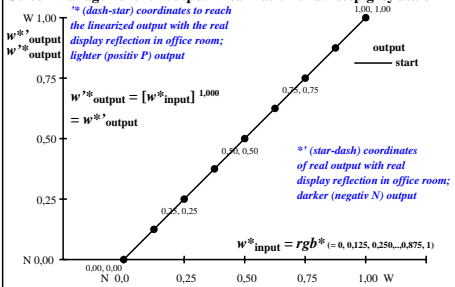
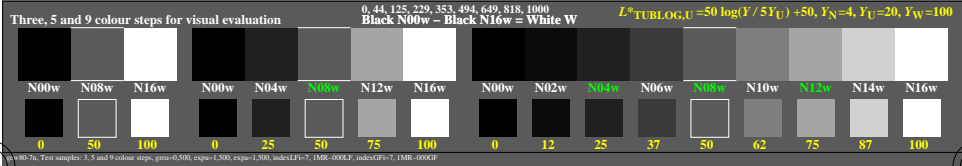
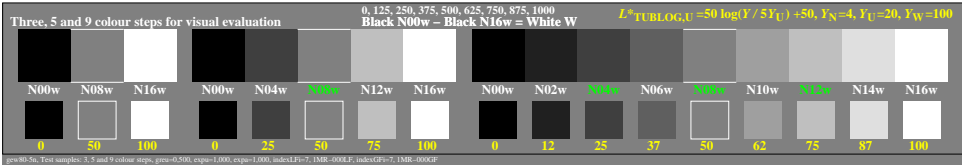
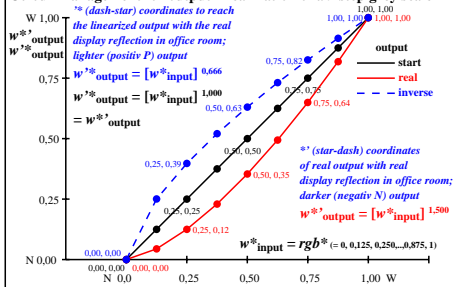


### Colour management for output linearization of a 9 step grey scale



### Colour management for output linearization of a 9 step grey scale



TUB-test chart gew8; Linearization (inverse) *IMR=000LF* and Gamma (76 lines) in (5/7)n  
 Gamma=1 (start), 1,5 (real), 0,667 (inverse); linearisation: Gamma=1(5n), 0,667(7n,d=N06w->N06w)

see similar files of the whole serie: <http://farbe.li.tu-berlin.de/gew8/gew8.htm>  
 technical information: <http://farbe.li.tu-berlin.de> or <http://color.li.tu-berlin.de>

TUB registration: 20240801\_gew8/gew8l0n1.txt / .ps  
 application for evaluation and measurement of display or print output

TUB material: code=mat4a