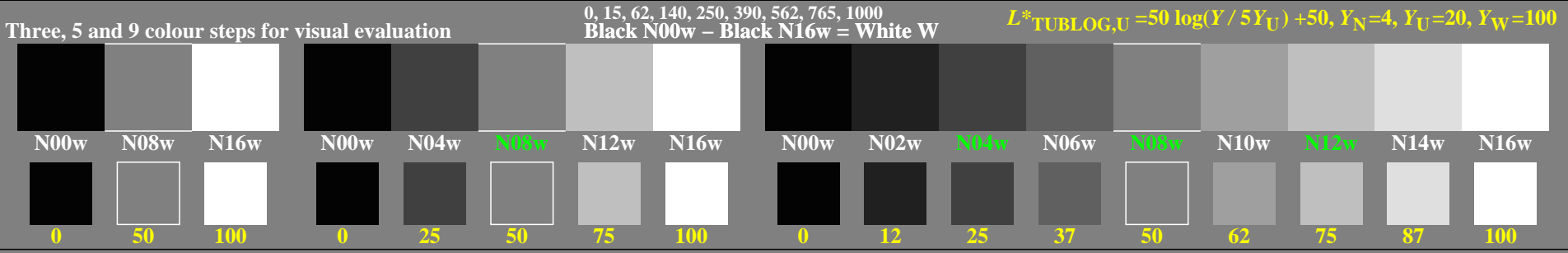


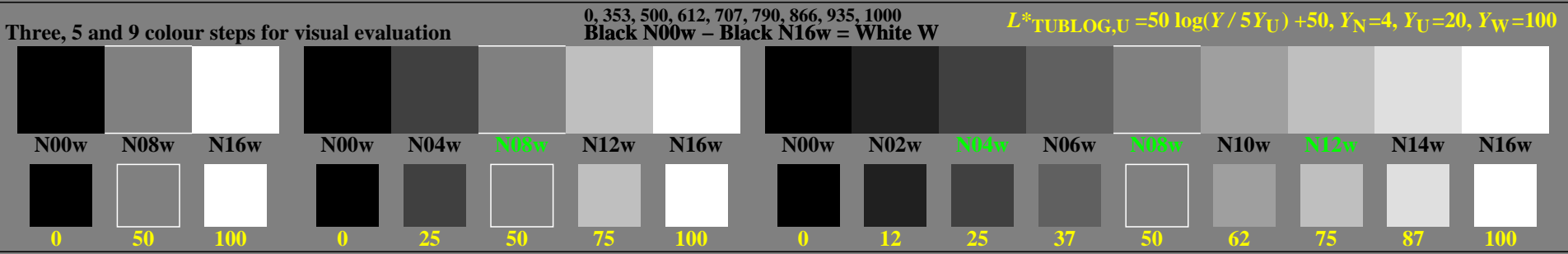
<http://farbe.li.tu-berlin.de/gev1/gev1l0na.txt> / .ps; only vector graphic VG; start output
 see separate images of this page: <http://farbe.li.tu-berlin.de/gev1/gev1.htm>



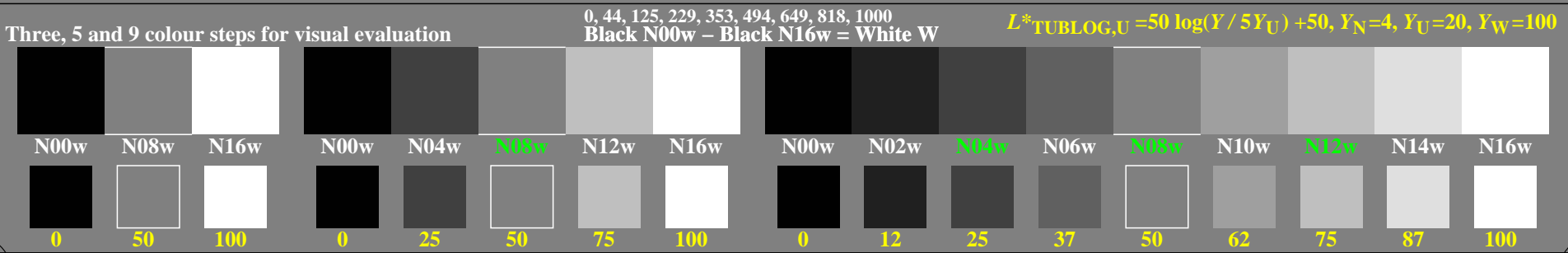
gev10-1n, Test samples: 3, 5 and 9 colour steps, greu=0.500, expu=1.000, expa=1.000



gev10-3n, Test samples: 3, 5 and 9 colour steps, greu=0.500, expu=2.000, expa=2.000



gev10-5n, Test samples: 3, 5 and 9 colour steps, greu=0.500, expu=0.500, expa=0.500



gev10-7n, Test samples: 3, 5 and 9 colour steps, greu=0.500, expu=1.500, expa=1.500

TUB-test chart gev1; Linearization code *1MR-000LF* and Gamma (76 lines) in (1/3/5/7)n
 inverse Gamma=1, 0,5, 2, 0,6667; series N–W with 3, 5, 9 steps; U: (1/3/5/7/9)n=N(08/08/08/08)w

see similar files of the whole serie: <http://farbe.li.tu-berlin.de/gevs.htm>
 technical information: <http://farbe.li.tu-berlin.de> or <http://color.li.tu-berlin.de>

TUB registration: 20240801-gev1/gev1l0na.txt/.ps
 application for evaluation and measurement of display or print output
 TUB material: code=rh4ta