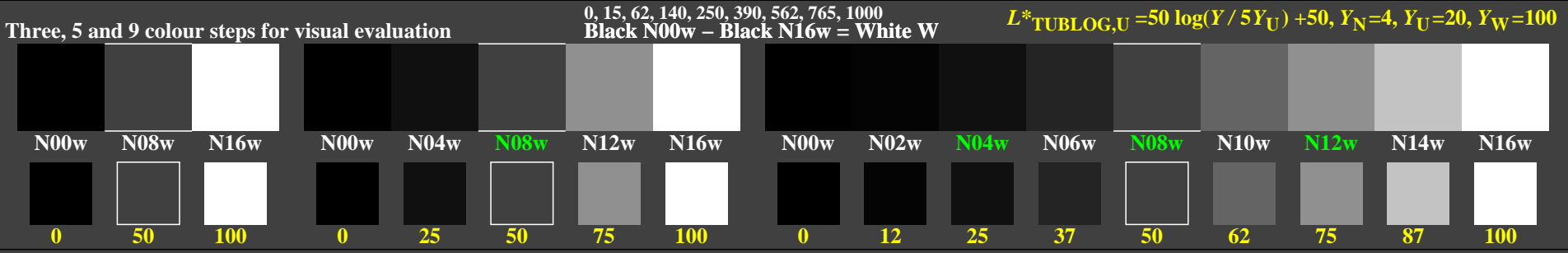


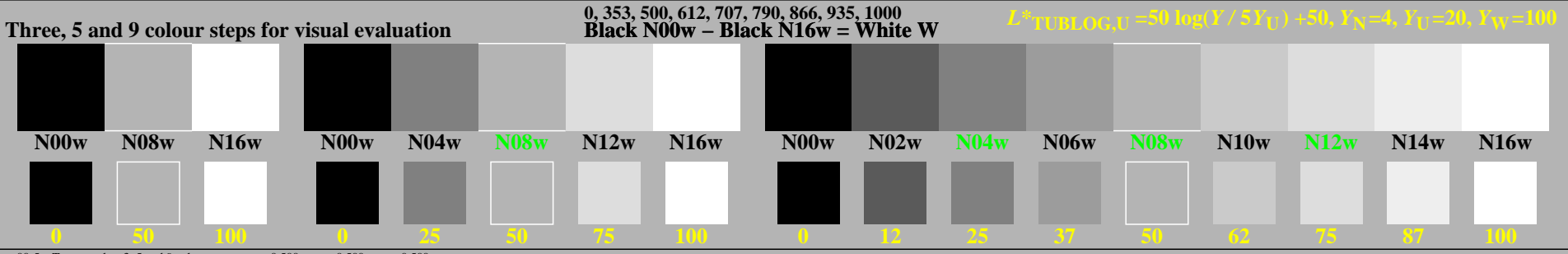
<http://farbe.li.tu-berlin.de/gev0/gev010na.txt> / .ps; only vector graphic VG; start output
 see separate images of this page: <http://farbe.li.tu-berlin.de/gev0/gev0.htm>



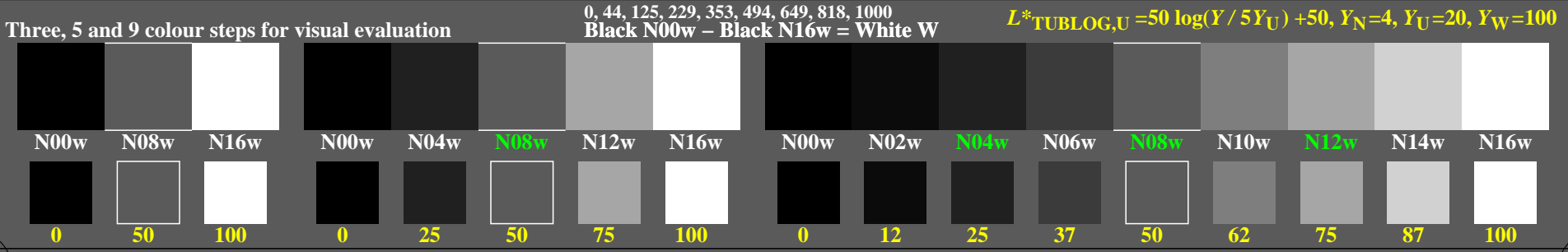
gev0-1n, Test samples: 3, 5 and 9 colour steps, greu=0.500, expu=1.000, expa=1.000



gev0-3n, Test samples: 3, 5 and 9 colour steps, greu=0.500, expu=2.000, expa=2.000



gev0-5n, Test samples: 3, 5 and 9 colour steps, greu=0.500, expu=0.500, expa=0.500



gev0-7n, Test samples: 3, 5 and 9 colour steps, greu=0.500, expu=1.500, expa=1.500

TUB-test chart gev0; Linearization code *1MR-000LF* and Gamma (76 lines) in (1/3/5/7)n
 Gamma=1, 2, 0.5, 1.5; series N–W with 3, 5, 9 steps; U: (1/3/5/7/9)n=N(08/04/12/06)w

see similar files of the whole serie: <http://farbe.li.tu-berlin.de/gev0/gev010na.txt> / .ps
 technical information: <http://farbe.li.tu-berlin.de> or <http://color.li.tu-berlin.de>

TUB registration: 20240801-gev0/gev010na.txt / .ps
 application for evaluation and measurement of display or print output

TUB material: code=rh4ta