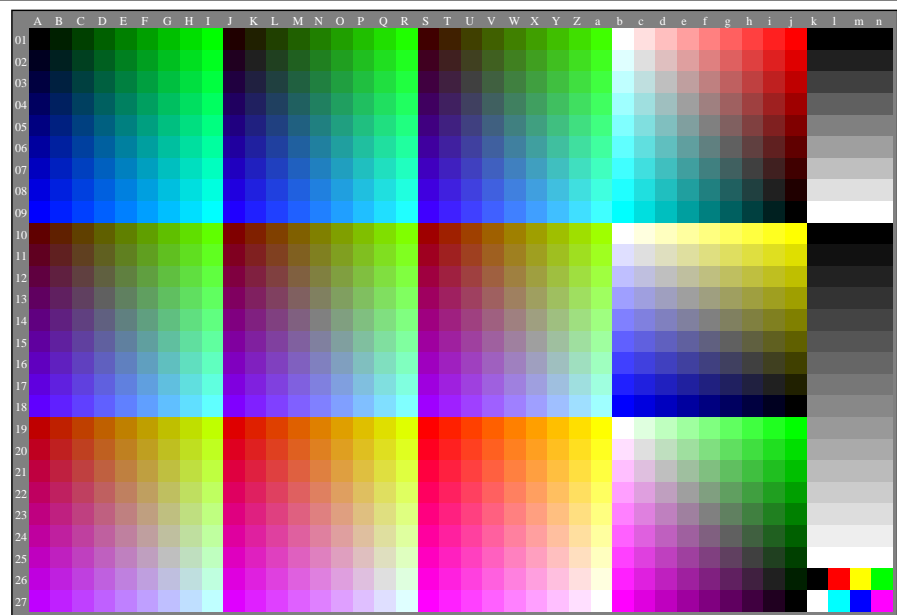


<http://farbe.li.tu-berlin.de/geu8/geu8l0np.pdf> /.ps; only vector graphic VG;
see separate images of this page: <http://farbe.li.tu-berlin.de/geu8/geu8.htm>

see similar files of the whole serie: <http://farbe.li.tu-berlin.de/geus.htm>
technical information: <http://farbe.li.tu-berlin.de> OR <http://color.li.tu-berlin.de>

TUB registration: 20240201-geu8/geu8l0np.pdf /.ps TUB material: code=rha4ta
application for evaluation and measurement of display or print output



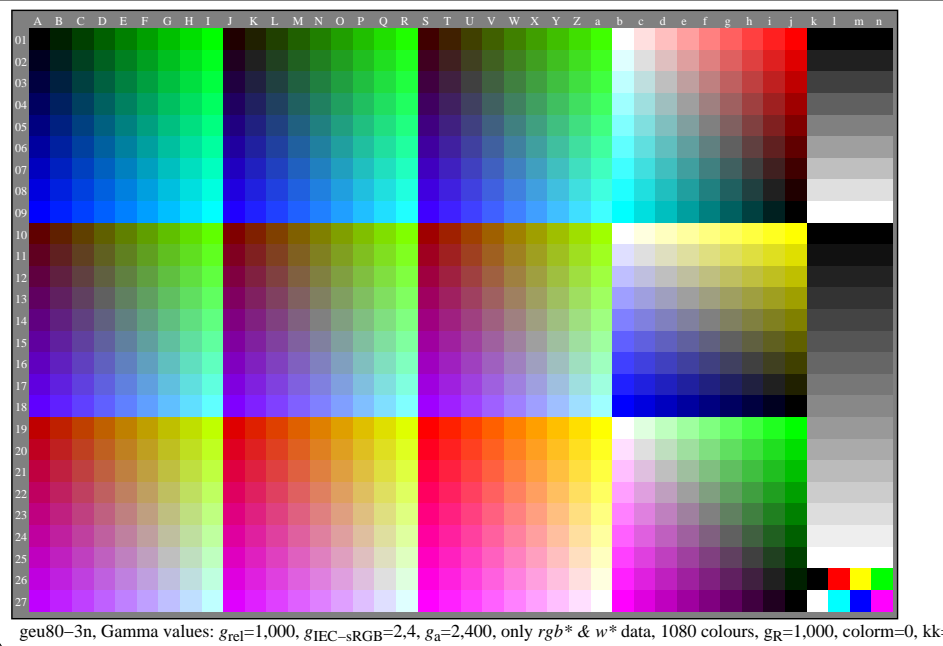
geu80-3n. Gamma values: $g_{rel}=1,000$, $g_{IEC-sRGB}=2,4$, $g_a=2,400$, only *rgb** & *w** data, 1080 colours, $g_R=1,000$, $color_m=0$, $kk=0$, $nk=0$, $xchart=7$, $kx(kk)=1.0$

TUB-test chart geu8; Change of <http://standards.iso.org/iso/9241/306/ed-2/AE49/AE49L0NP.PDF>
Grey sample lightness decreases by a factor $R=0.95$, no change of RGBCMY, all values on next page

<http://farbe.li.tu-berlin.de/geu8/geu8l0np.pdf> /.ps; only vector graphic VG;
see separate images of this page: <http://farbe.li.tu-berlin.de/geu8/geu8.htm>

see similar files of the whole serie: <http://farbe.li.tu-berlin.de/geus.htm>
technical information: <http://farbe.li.tu-berlin.de> OR <http://color.li.tu-berlin.de>

TUB registration: 20240201-geu8/geu8l0np.pdf /.ps TUB material: code=rha4ta
application for evaluation and measurement of display or print output



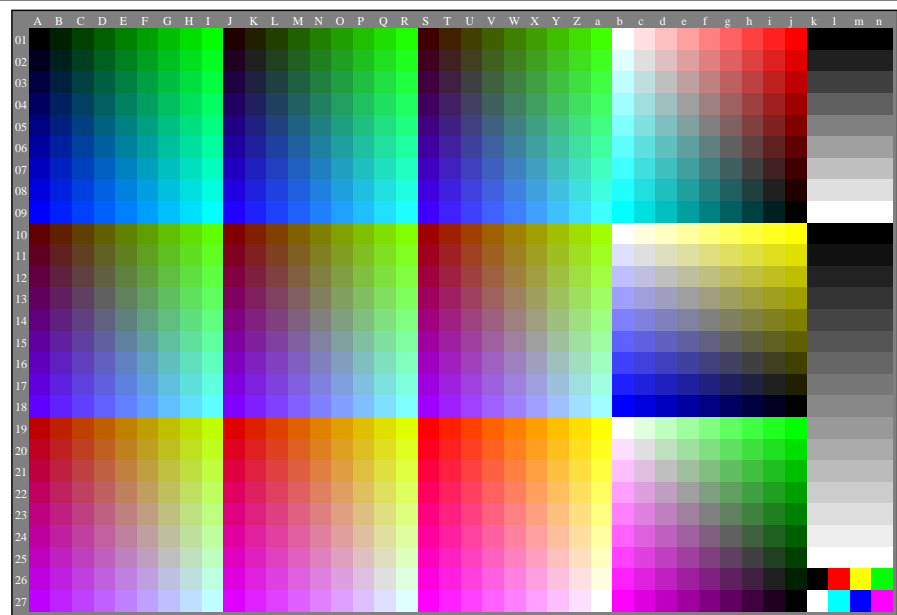
TUB-test chart geu8; Change of <http://standards.iso.org/iso/9241/306/ed-2/AE49/AE49L0NP.PDF>
Grey sample lightness decreases by a factor $R=0.85$, no change of RGBCMY, all values on next page

1=000700-E0

<http://farbe.li.tu-berlin.de/geu8/geu8l0np.pdf> /.ps; only vector graphic VG;
see separate images of this page: <http://farbe.li.tu-berlin.de/geu8/geu8.htm>

see similar files of the whole serie: <http://farbe.li.tu-berlin.de/geus.htm>
technical information: <http://farbe.li.tu-berlin.de> OR <http://color.li.tu-berlin.de>

TUB registration: 20240201-geu8/geu8l0np.pdf /.ps TUB material: code=rha4ta
application for evaluation and measurement of display or print output



geu80-3n. Gamma values: $g_{rel}=1,000$, $g_{IEC-sRGB}=2,4$, $g_a=2,400$, only *rgb** & *w** data, 1080 colours, $g_R=1,000$, $colorm=0$, $kk=0$, $nk=0$, $xchartl=7$, $kx(kk)=1.0$

TUB-test chart geu8; Change of <http://standards.iso.org/iso/9241/306/ed-2/AE49/AE49L0NP.PDF>
Grey sample lightness decreases by a factor $R=0.65$, no change of RGBCMY, all values on next page

1=0001400=F0

