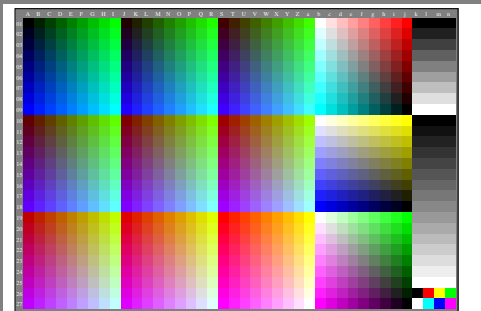


<http://farbe.li.tu-berlin.de/geu8/geu8l0n1.txt/.ps>; only vector graphic VG; start output  
see separate images of this page: <http://farbe.li.tu-berlin.de/geu8/geu8.htm>

see similar files of the whole serie: <http://farbe.li.tu-berlin.de/geu8.htm>  
technical information: <http://farbe.li.tu-berlin.de> or <http://color.li.tu-berlin.de>

TUB registration: 20240201-geu8/geu8l0n1.txt/.ps  
application for evaluation and measurement of display or print output

TUB material: code=rh4ta



geu80-3n, Gamma values:  $g_{fe}=1,000$ ,  $g_{IEC} \sim RGB=2,4$ ,  $g_a=2,400$ , only  $rgb^*$  &  $w^*$  data, 1080 colours,  $g_R=1,000$ , color=0,  $kk=0$ ,  $nk=0$ ,  $x_{chart}=7$ ,  $kx(kk)=1.0$

TUB-test chart geu8; Change of <http://standards.iso.org/iso/9241/306/ed-2/AE49/AE49L0NP.PDF>  
Grey sample lightness decreases by a factor  $R=1.0$ , no change of RGBCMY, all values on next page