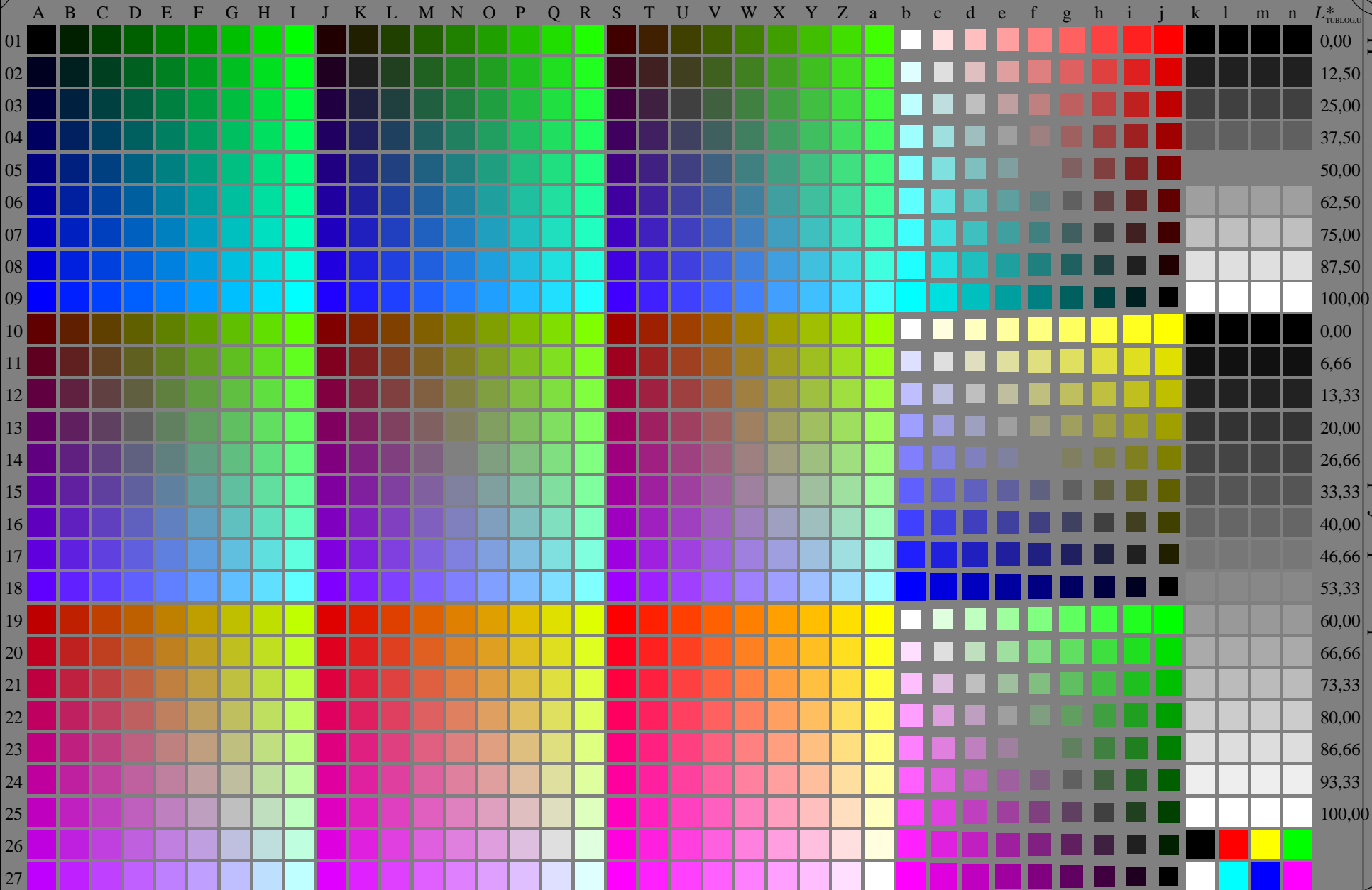


<http://farbe.li.tu-berlin.de/geu7/geu7l0na.txt> /.ps; only vector graphic VG; start output
 see separate images of this page: <http://farbe.li.tu-berlin.de/geu7/geu7.htm>

see similar files of the whole serie: <http://farbe.li.tu-berlin.de/geus.htm>
 technical information: <http://farbe.li.tu-berlin.de> or <http://color.li.tu-berlin.de>



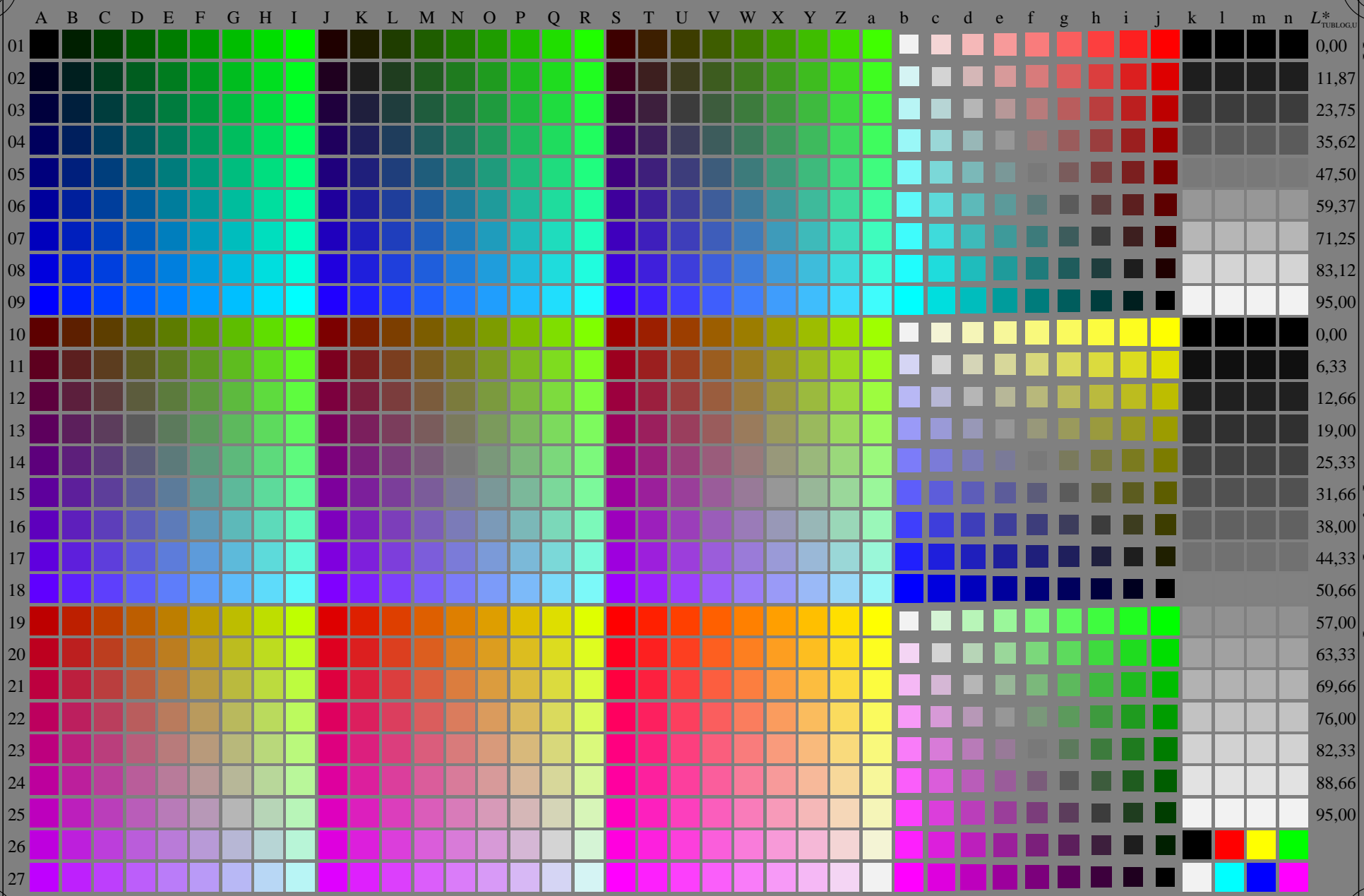
TUB registration: 20240201-geu7/geu7l0na.txt /.ps
 application for evaluation and measurement of display or print output
 TUB material: code=rha4ta

geu70-7N, 1/16, colorm=0, kk=0, nk=0, xchartl=2, kx(kk)=1.0

TUB-test chart geu7; Change of <http://standards.iso.org/iso/9241/306/ed-2/AE49/AE49L0NP.PDF>
 Grey sample lightness decreases by a factor $R=1.0$, no change of RGBCMY, all values on next page

<http://farbe.li.tu-berlin.de/geu7/geu7l0na.txt> /.ps; only vector graphic VG;
see separate images of this page: <http://farbe.li.tu-berlin.de/geu7/geu7.htm>

see similar files of the whole serie: <http://farbe.li.tu-berlin.de/geus.htm>
technical information: <http://farbe.li.tu-berlin.de> or <http://color.li.tu-berlin.de>



TUB registration: 20240201-geu7/geu7l0na.txt /.ps
application for evaluation and measurement of display or print output
TUB material: code=rha4ta

geu70-7N, 3/16, colorm=0, kk=1, nk=0, xchartl=2, kx(kk)=0.95

TUB-test chart geu7; Change of <http://standards.iso.org/iso/9241/306/ed-2/AE49/AE49L0NP.PDF>
Grey sample lightness decreases by a factor $R=0.95$, no change of RGBCMY, all values on next page

1=000200=F0

http://farbe.li.tu-berlin.de/geu7/geu10na.txt / .ps: only vector graphic VG;
 see separate images of this page: http://farbe.li.tu-berlin.de/geu7/geu7.htm

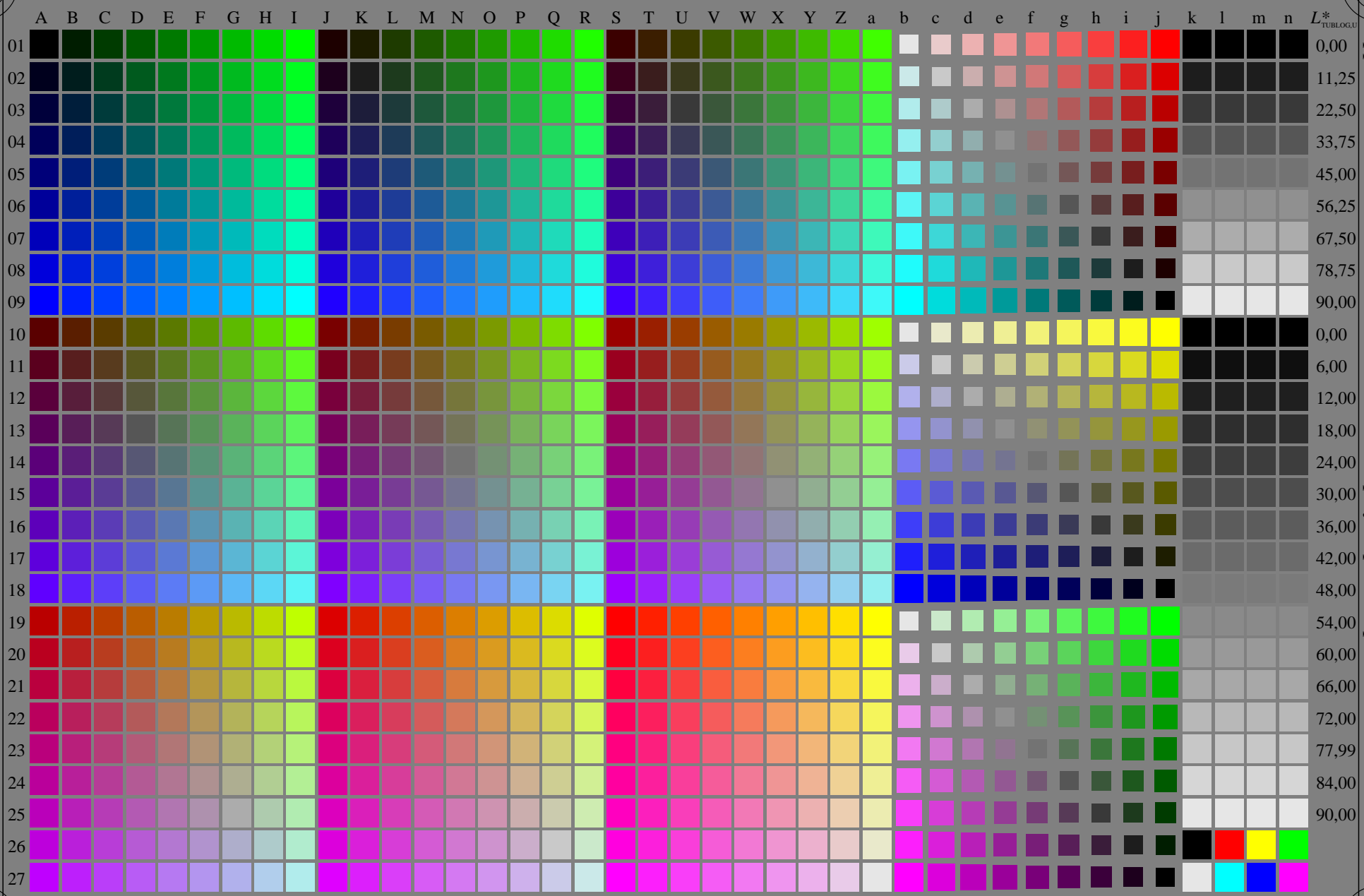
	A	B	C	D	E	F	G	H	I	J	K	L	M	N	O	P	Q	R	S	T	U	V	W	X	Y	Z	a	b	c	d	e	f	g	h	i	j	k	l	m	n	L*
00	0000 A00	0000 B00	0001 C00	0001 D00	0002 E00	0002 F00	0003 G00	0003 H00	0004 I00	0004 J00	0005 K00	0005 L00	0006 M00	0006 N00	0007 O00	0007 P00	0008 Q00	0008 R00	0009 S00	0009 T00	0010 U00	0010 V00	0010 W00	0010 X00	0010 Y00	0010 Z00	0011 a00	0011 b00	0011 c00	0011 d00	0011 e00	0011 f00	0011 g00	0011 h00	0011 i00	0011 j00	0011 k00	0011 l00	0011 m00	0011 n00	0011 L*00
01	0000 A01	0000 B01	0001 C01	0001 D01	0002 E01	0002 F01	0003 G01	0003 H01	0004 I01	0004 J01	0005 K01	0005 L01	0006 M01	0006 N01	0007 O01	0007 P01	0008 Q01	0008 R01	0009 S01	0009 T01	0010 U01	0010 V01	0010 W01	0010 X01	0010 Y01	0010 Z01	0011 a01	0011 b01	0011 c01	0011 d01	0011 e01	0011 f01	0011 g01	0011 h01	0011 i01	0011 j01	0011 k01	0011 l01	0011 m01	0011 n01	0011 L*01

TUB registration: 20240201-geu7/geu10na.txt / .ps
 application for evaluation and measurement of display or print output
 TUB materia: code=alfathata

see similar files of the whole serie: http://farbe.li.tu-berlin.de
 technical information: http://farbe.li.tu-berlin.de
 or http://color.li.tu-berlin.de

<http://farbe.li.tu-berlin.de/geu7/geu7l0na.txt> /.ps; only vector graphic VG;
see separate images of this page: <http://farbe.li.tu-berlin.de/geu7/geu7.htm>

see similar files of the whole serie: <http://farbe.li.tu-berlin.de/geus.htm>
technical information: <http://farbe.li.tu-berlin.de> or <http://color.li.tu-berlin.de>



TUB registration: 20240201-geu7/geu7l0na.txt /.ps
application for evaluation and measurement of display or print output
TUB material: code=rha4ta

geu70-7N, 5/16, colorm=0, kk=2, nk=0, xchartl=2, kx(kk)=0.9

TUB-test chart geu7; Change of <http://standards.iso.org/iso/9241/306/ed-2/AE49/AE49L0NP.PDF>
Grey sample lightness decreases by a factor $R=0.9$, no change of RGBCMY, all values on next page

1=000400=F0

http://farbe.li.tu-berlin.de/geu7/geu710na.txt / .ps: only vector graphic VG;
 see separate images of this page: http://farbe.li.tu-berlin.de/geu7/geu7.htm

see similar files of the whole serie: http://farbe.li.tu-berlin.de/ or http://color.li.tu-berlin.de

A	B	C	D	E	F	G	H	I	J	K	L	M	N	O	P	Q	R	S	T	U	V	W	X	Y	Z	a	b	c	d	e	f	g	h	i	j	k	l	m	n	L*
0000 A00	0000 B00	0000 C00	0000 D00	0000 E00	0000 F00	0000 G00	0000 H00	0000 I00	0000 J00	0000 K00	0000 L00	0000 M00	0000 N00	0000 O00	0000 P00	0000 Q00	0000 R00	0000 S00	0000 T00	0000 U00	0000 V00	0000 W00	0000 X00	0000 Y00	0000 Z00	0000 a00	0000 b00	0000 c00	0000 d00	0000 e00	0000 f00	0000 g00	0000 h00	0000 i00	0000 j00	0000 k00	0000 l00	0000 m00	0000 n00	0000 L*00
0001 A01	0001 B01	0001 C01	0001 D01	0001 E01	0001 F01	0001 G01	0001 H01	0001 I01	0001 J01	0001 K01	0001 L01	0001 M01	0001 N01	0001 O01	0001 P01	0001 Q01	0001 R01	0001 S01	0001 T01	0001 U01	0001 V01	0001 W01	0001 X01	0001 Y01	0001 Z01	0001 a01	0001 b01	0001 c01	0001 d01	0001 e01	0001 f01	0001 g01	0001 h01	0001 i01	0001 j01	0001 k01	0001 l01	0001 m01	0001 n01	0001 L*01

geu70-7N, 6/16, colorm=0, kk=2, nk=1, xchart=3, kx(kk)=0.9

TUB-test chart geu7; Change of http://standards.isrg.info/924/3306/ed-2/AE49/AE49L/NP.PDF
 Grey sample lightness decreases by a factor R=0.9, no change of RGB/C/M values on next page

1=0050-F6

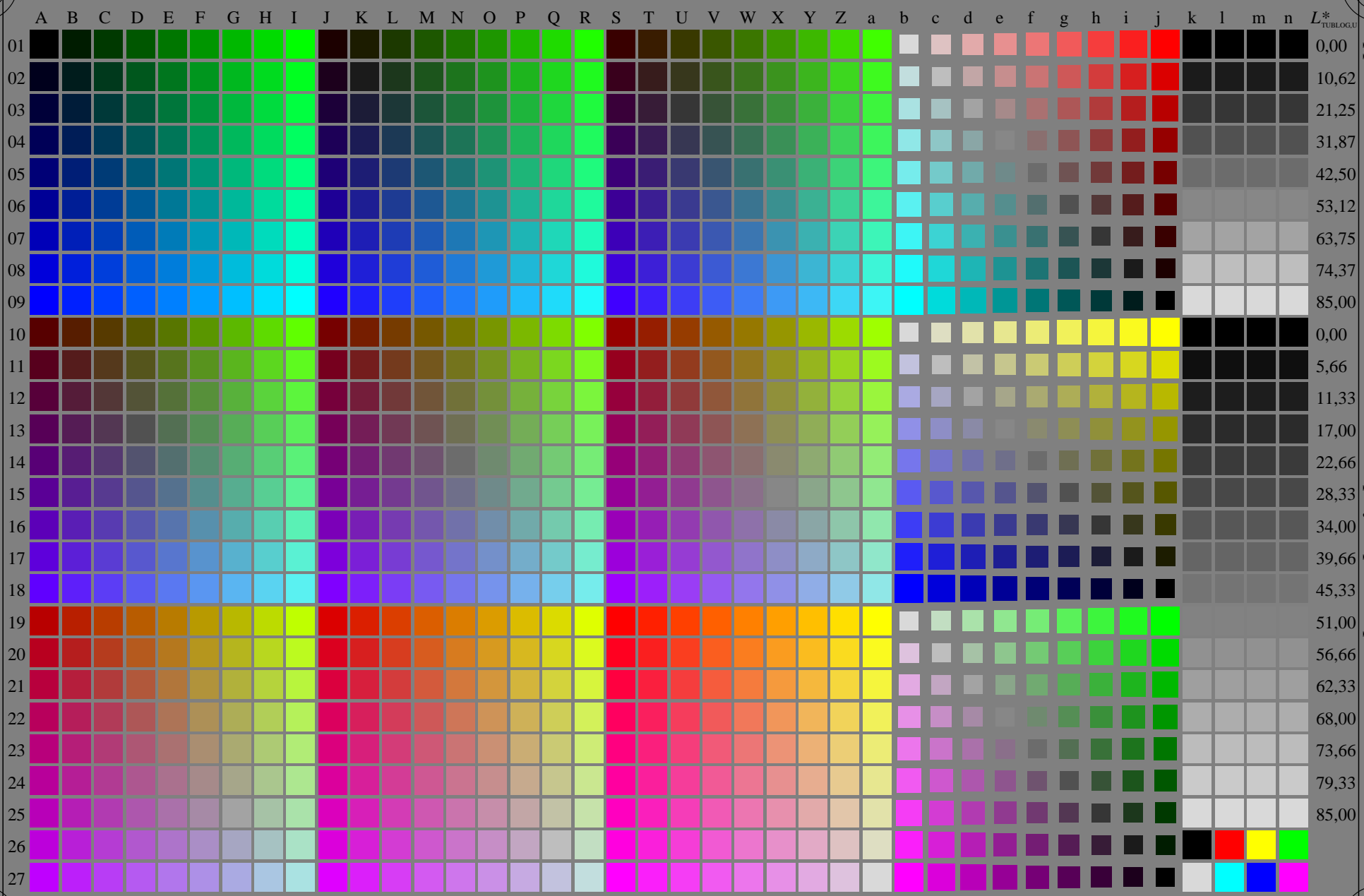
TUB registration: 2014-04-01
 application for evaluation and measurement of display or print output
 TUB materia: code=phi4ta

0.00
11.25
22.50
33.75
45.00
56.25
67.50
78.75
90.00
0.00
6.00
12.00
18.00
24.00
30.00
36.00
42.00
48.00
54.00
60.00
66.00
72.00
77.99
84.00
90.00

01
02
03
04
05
06
07
08
09
10
11
12
13
14
15
16
17
18
19
20
21
22
23
24
25
26
27

<http://farbe.li.tu-berlin.de/geu7/geu7l0na.txt> /.ps; only vector graphic VG;
see separate images of this page: <http://farbe.li.tu-berlin.de/geu7/geu7.htm>

see similar files of the whole serie: <http://farbe.li.tu-berlin.de/geus.htm>
technical information: <http://farbe.li.tu-berlin.de> or <http://color.li.tu-berlin.de>



TUB registration: 20240201-geu7/geu7l0na.txt /.ps
application for evaluation and measurement of display or print output
TUB material: code=rha4ta

geu70-7N, 7/16, colorm=0, kk=3, nk=0, xchartl=2, kx(kk)=0.85

TUB-test chart geu7; Change of <http://standards.iso.org/iso/9241/306/ed-2/AE49/AE49L0NP.PDF>
Grey sample lightness decreases by a factor $R=0.85$, no change of RGBCMY, all values on next page

1=000600-E0

http://farbe.li.tu-berlin.de/geu7/geu7110na.txt / .ps: only vector graphic VG;
see separate images of this page: http://farbe.li.tu-berlin.de/geu7/geu7.htm

Color calibration chart with columns A through L* and rows 01 through 28. Each cell contains a 4x4 grid of color and grayscale patches with associated numerical data.

geu70-7N, 8/16, colorm=0, k=3, nk=1, xchart=13, kx(k)=0.85

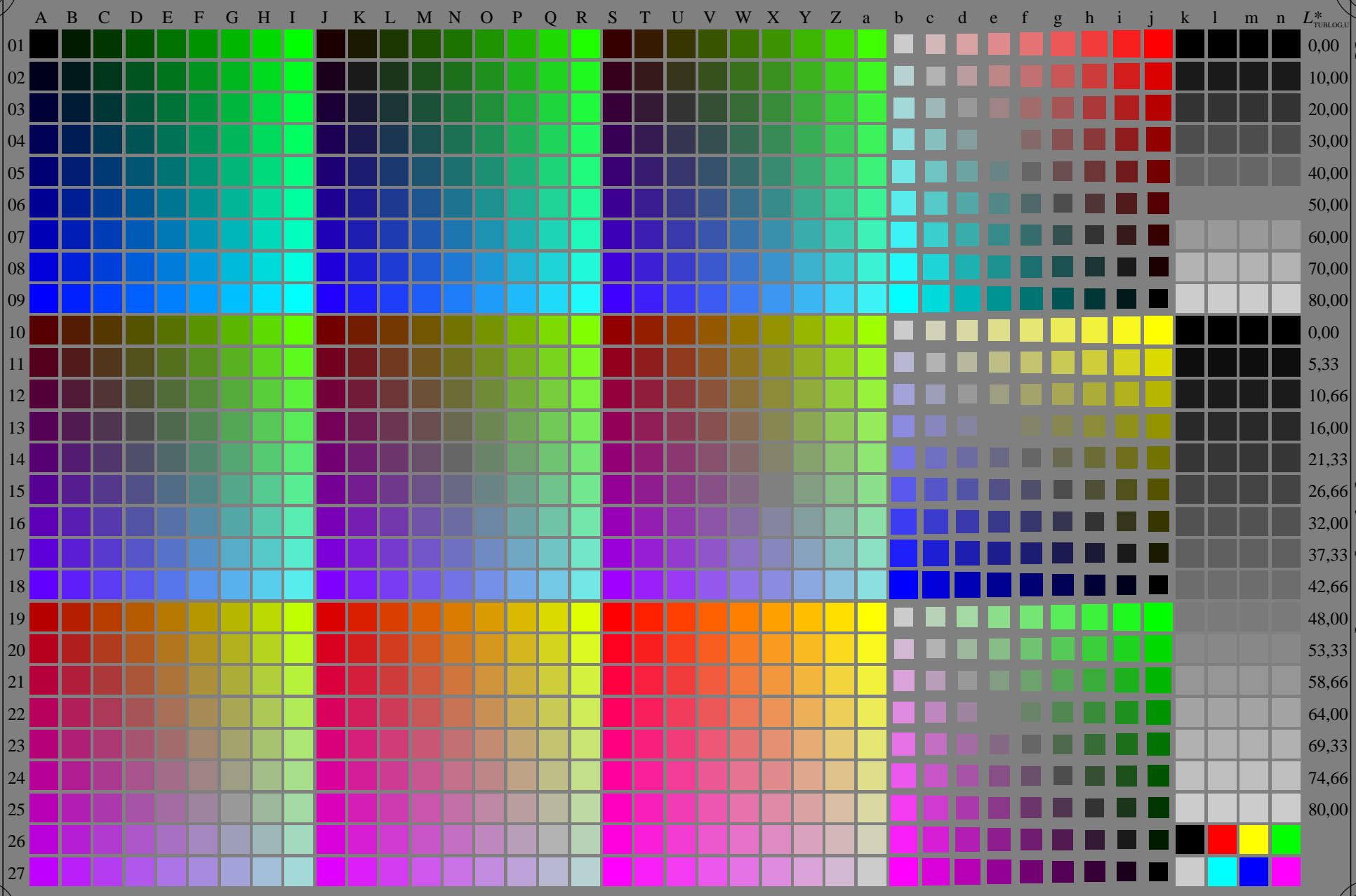
TUB test chart geu7: Change of http://standards.iso.org/iso/9243/306/e2/-AE49/AE49L/ONP.PDF
Gray sample lightness decreases by a factor R=0.85, no change of RGBCM, all values on next page

TUB registration: 20240201-geu7/geu7110na.txt / .ps
application for evaluation and measurement of display or print output
TUB materia: code=phata1a

see similar files of the whole serie: http://farbe.li.tu-berlin.de/ or http://color.li.tu-berlin.de/
technical information: http://farbe.li.tu-berlin.de/

<http://farbe.li.tu-berlin.de/geu7/geu7l0na.txt> /.ps; only vector graphic VG;
see separate images of this page: <http://farbe.li.tu-berlin.de/geu7/geu7.htm>

see similar files of the whole serie: <http://farbe.li.tu-berlin.de/geus.htm>
technical information: <http://farbe.li.tu-berlin.de> or <http://color.li.tu-berlin.de>



TUB registration: 20240201-geu7/geu7l0na.txt /.ps
application for evaluation and measurement of display or print output
TUB material: code=rha4ta

geu70-7N, 9/16, colorm=0, kk=4, nk=0, xchartl=2, kx(kk)=0.8

TUB-test chart geu7; Change of <http://standards.iso.org/iso/9241/306/ed-2/AE49/AE49L0NP.PDF>
Grey sample lightness decreases by a factor $R=0.8$, no change of RGBCMY, all values on next page

1=000800-E0

<http://farbe.li.tu-berlin.de/geu/7/18/0na.txt> / .ps: only vector graphic VG;
see separate images of this page: <http://farbe.li.tu-berlin.de/geu/77.htm>

see similar files of the whole serie: <http://farbe.li.tu-berlin.de/geus.htm>
technical information: <http://farbe.li.tu-berlin.de> or <http://color.li.tu-berlin.de>

TUB registration: 20140201 -geu/7/18/0na.txt / .ps
application for evaluation and measurement of display or print output

TUB materia: code =phiata

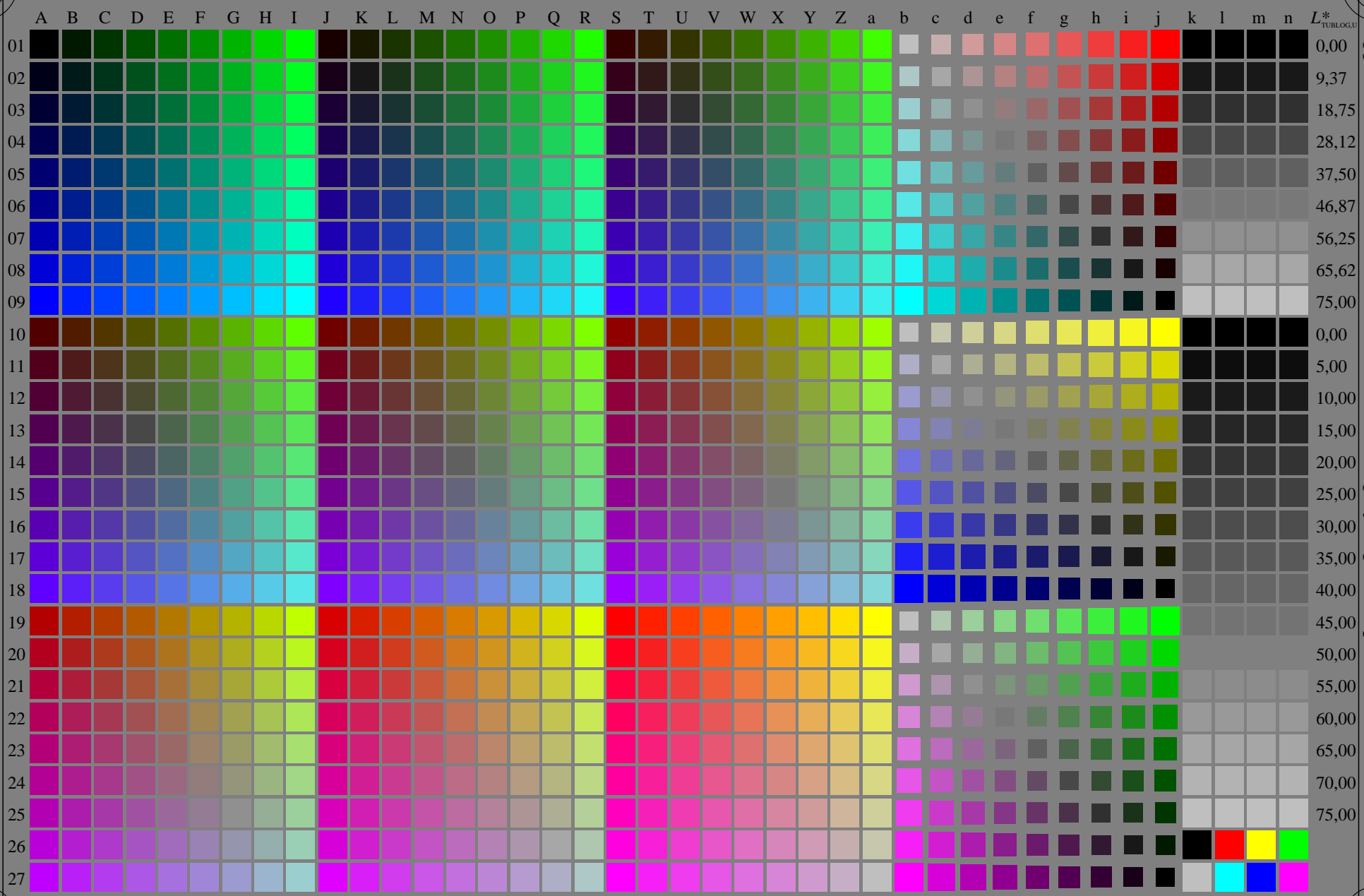
00	0000 A00	0001 B00	0002 C00	0003 D00	0004 E00	0005 F00	0006 G00	0007 H00	0008 I00	0009 J00	0010 K00	0011 L00	0012 M00	0013 N00	0014 O00	0015 P00	0016 Q00	0017 R00	0018 S00	0019 T00	0020 U00	0021 V00	0022 W00	0023 X00	0024 Y00	0025 Z00	0026 a00	0027 b00	0028 c00	0029 d00	0030 e00	0031 f00	0032 g00	0033 h00	0034 i00	0035 j00	0036 k00	0037 l00	0038 m00	0039 n00	0040 L*00
01	0000 A01	0001 B01	0002 C01	0003 D01	0004 E01	0005 F01	0006 G01	0007 H01	0008 I01	0009 J01	0010 K01	0011 L01	0012 M01	0013 N01	0014 O01	0015 P01	0016 Q01	0017 R01	0018 S01	0019 T01	0020 U01	0021 V01	0022 W01	0023 X01	0024 Y01	0025 Z01	0026 a01	0027 b01	0028 c01	0029 d01	0030 e01	0031 f01	0032 g01	0033 h01	0034 i01	0035 j01	0036 k01	0037 l01	0038 m01	0039 n01	0040 L*01

geu/70-7N, 10/16, colorm=0, kk=4, nk=1, xchart=3, kx(kk)=0.8

TUB test chart geu/7: Change of <http://standards.iso.org/9242/3066/ed-2/AE49/AE49LONP.PDF>
Grey scale lightness decreases by a factor R=0.8 no change of RGBCMY, all values on next page

<http://farbe.li.tu-berlin.de/geu7/geu7l0na.txt> /.ps; only vector graphic VG;
see separate images of this page: <http://farbe.li.tu-berlin.de/geu7/geu7.htm>

see similar files of the whole serie: <http://farbe.li.tu-berlin.de/geus.htm>
technical information: <http://farbe.li.tu-berlin.de> or <http://color.li.tu-berlin.de>



TUB registration: 20240201-geu7/geu7l0na.txt /.ps
application for evaluation and measurement of display or print output
TUB material: code=rha4ta

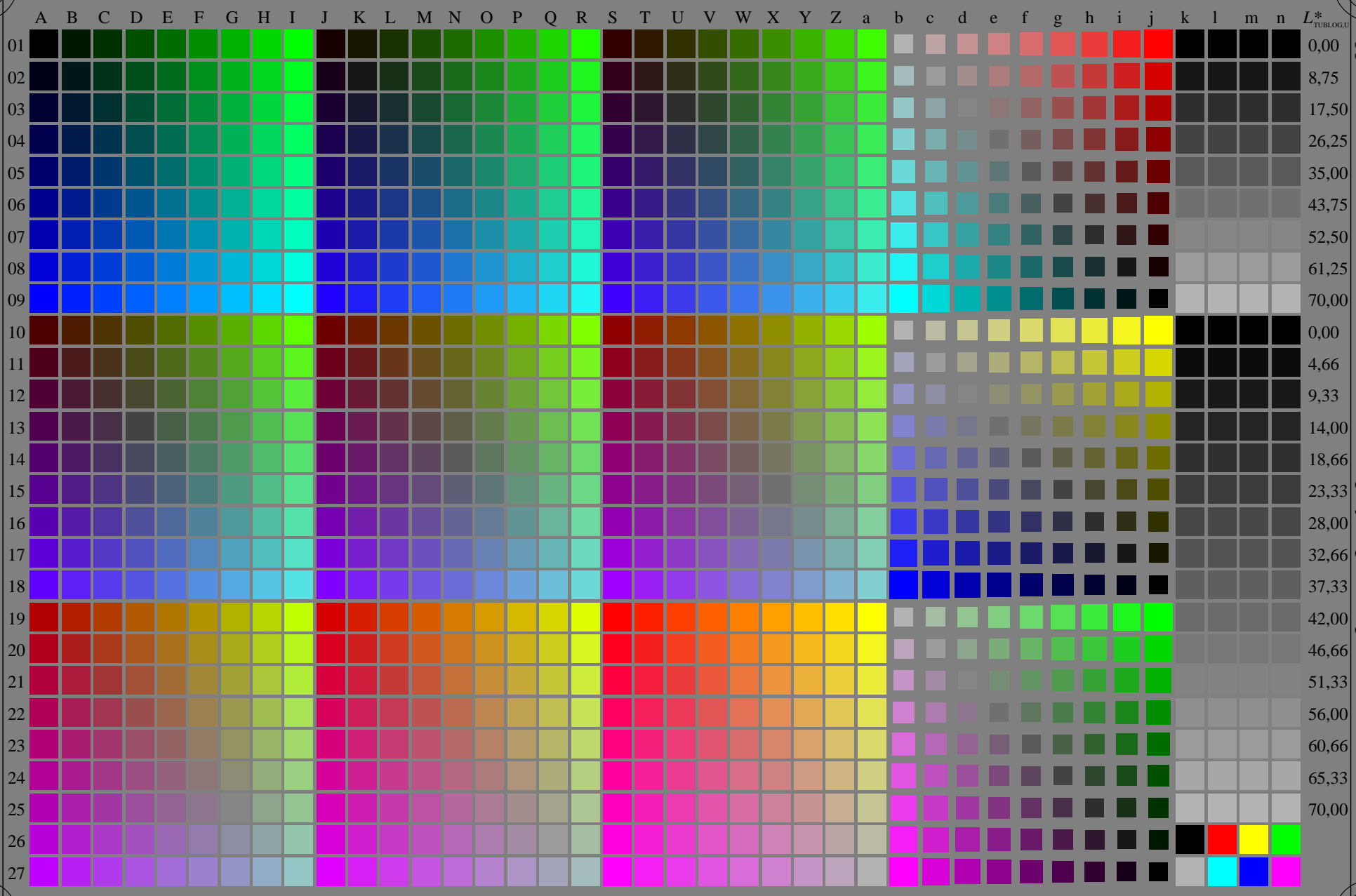
geu70-7N, 11/16, colorm=0, kk=5, nk=0, xchart=2, kx(kk)=0.75

TUB-test chart geu7; Change of <http://standards.iso.org/iso/9241/306/ed-2/AE49/AE49L0NP.PDF>
Grey sample lightness decreases by a factor $R=0.75$, no change of RGBCMY, all values on next page

1=0001000=F0

<http://farbe.li.tu-berlin.de/geu7/geu7l0na.txt> /.ps; only vector graphic VG;
see separate images of this page: <http://farbe.li.tu-berlin.de/geu7/geu7.htm>

see similar files of the whole serie: <http://farbe.li.tu-berlin.de/geus.htm>
technical information: <http://farbe.li.tu-berlin.de> or <http://color.li.tu-berlin.de>



TUB registration: 20240201-geu7/geu7l0na.txt /.ps
application for evaluation and measurement of display or print output
TUB material: code=rha4ta

geu70-7N, 13/16, colorm=0, kk=6, nk=0, xchart=2, kx(kk)=0.7

TUB-test chart geu7; Change of <http://standards.iso.org/iso/9241/306/ed-2/AE49/AE49L0NP.PDF>
Grey sample lightness decreases by a factor $R=0.7$, no change of RGBCMY, all values on next page

1=0001200=F0

<http://farbe.li/ru-berlin.de/geu7/geu7110na.txt/>; only vector graphic VG;
 see separate images of this page: <http://farbe.li/ru-berlin.de/geu7/7.htm>



see similar files of the whole serie: <http://farbe.li/ru-berlin.de/geus.htm>
 technical information: <http://farbe.li/ru-berlin.de/or> <http://color.li/ru-berlin.de>

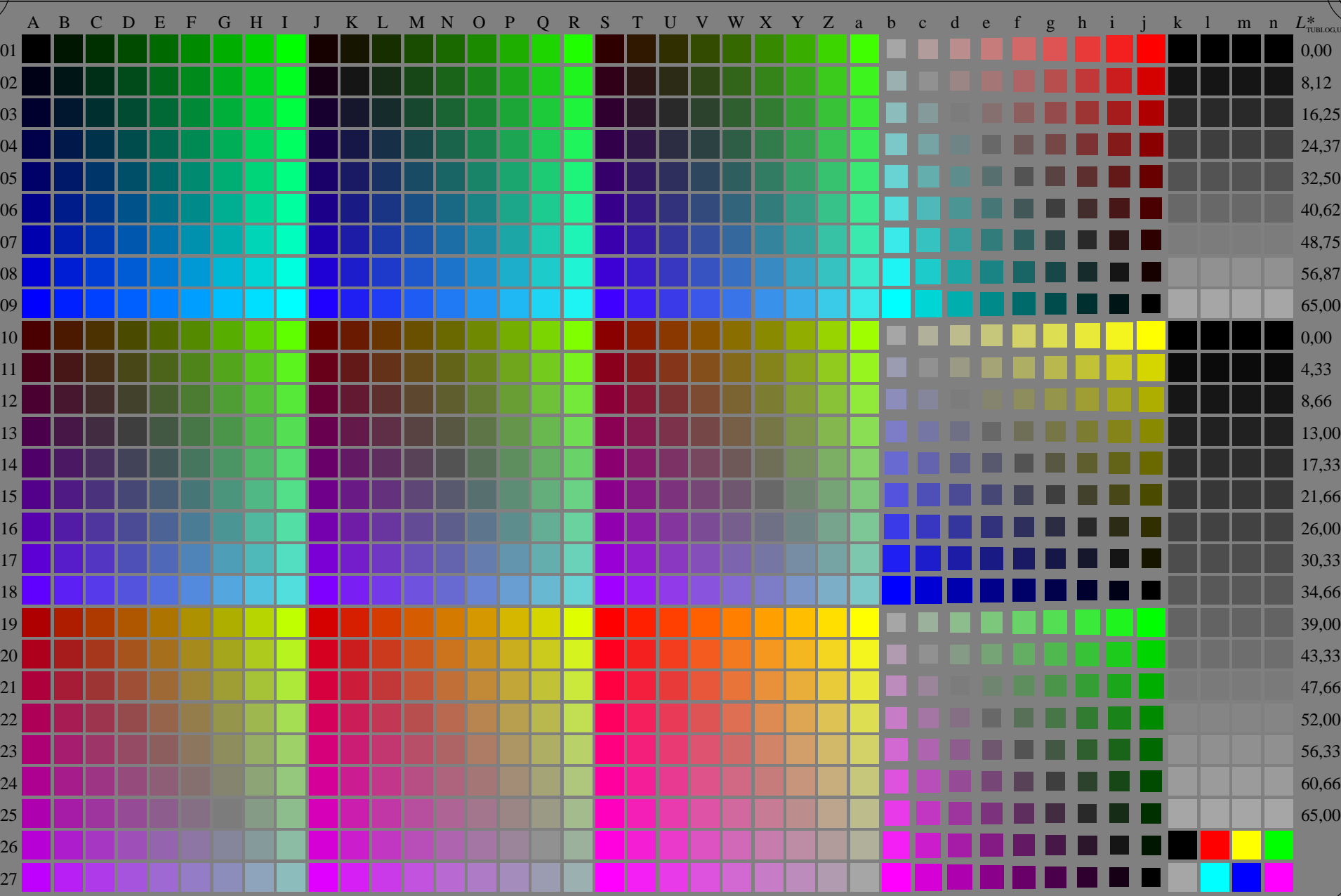
	A	B	C	D	E	F	G	H	I	J	K	L	M	N	O	P	Q	R	S	T	U	V	W	X	Y	Z	a	b	c	d	e	f	g	h	i	j	k	l	m	n	L*	TUBLOGU
00	0000 A00	0000 B00	0000 C00	0000 D00	0000 E00	0000 F00	0000 G00	0000 H00	0000 I00	0000 J00	0000 K00	0000 L00	0000 M00	0000 N00	0000 O00	0000 P00	0000 Q00	0000 R00	0000 S00	0000 T00	0000 U00	0000 V00	0000 W00	0000 X00	0000 Y00	0000 Z00	0000 a00	0000 b00	0000 c00	0000 d00	0000 e00	0000 f00	0000 g00	0000 h00	0000 i00	0000 j00	0000 k00	0000 l00	0000 m00	0000 n00	0000 L*00	0000 TUBLOGU00
01	0000 A01	0000 B01	0000 C01	0000 D01	0000 E01	0000 F01	0000 G01	0000 H01	0000 I01	0000 J01	0000 K01	0000 L01	0000 M01	0000 N01	0000 O01	0000 P01	0000 Q01	0000 R01	0000 S01	0000 T01	0000 U01	0000 V01	0000 W01	0000 X01	0000 Y01	0000 Z01	0000 a01	0000 b01	0000 c01	0000 d01	0000 e01	0000 f01	0000 g01	0000 h01	0000 i01	0000 j01	0000 k01	0000 l01	0000 m01	0000 n01	0000 L*01	0000 TUBLOGU01

geu70-7N, 14, 16, 17, 16, colorm=0, kk=6, nk=1, xchart=3, kx(kk)=0.7
 TUB-test chart geu7; Change of <http://standards.iso.org/iso/9241/306/ed-2/AE49/AE49LONP.PDF>
 Grey sample lightness decreases by a factor R=0.7 no change of RGBCMY; all values on next page
 =0001300=F0

TUB registration: 2022-09-10
 application for evaluation and measurement of display or print output
 TUB materia: code=alpha4ta

<http://farbe.li.tu-berlin.de/geu7/geu7l0na.txt> /.ps; only vector graphic VG;
see separate images of this page: <http://farbe.li.tu-berlin.de/geu7/geu7.htm>

see similar files of the whole serie: <http://farbe.li.tu-berlin.de/geus.htm>
technical information: <http://farbe.li.tu-berlin.de> or <http://color.li.tu-berlin.de>



TUB registration: 20240201-geu7/geu7l0na.txt /.ps
application for evaluation and measurement of display or print output
TUB material: code=rha4ta

geu70-7N, 15/16, colorm=0, kk=7, nk=0, xchart=2, kx(kk)=0.65

TUB-test chart geu7; Change of <http://standards.iso.org/iso/9241/306/ed-2/AE49/AE49L0NP.PDF>
Grey sample lightness decreases by a factor $R=0.65$, no change of RGBCMY, all values on next page

1=0001400=F0

