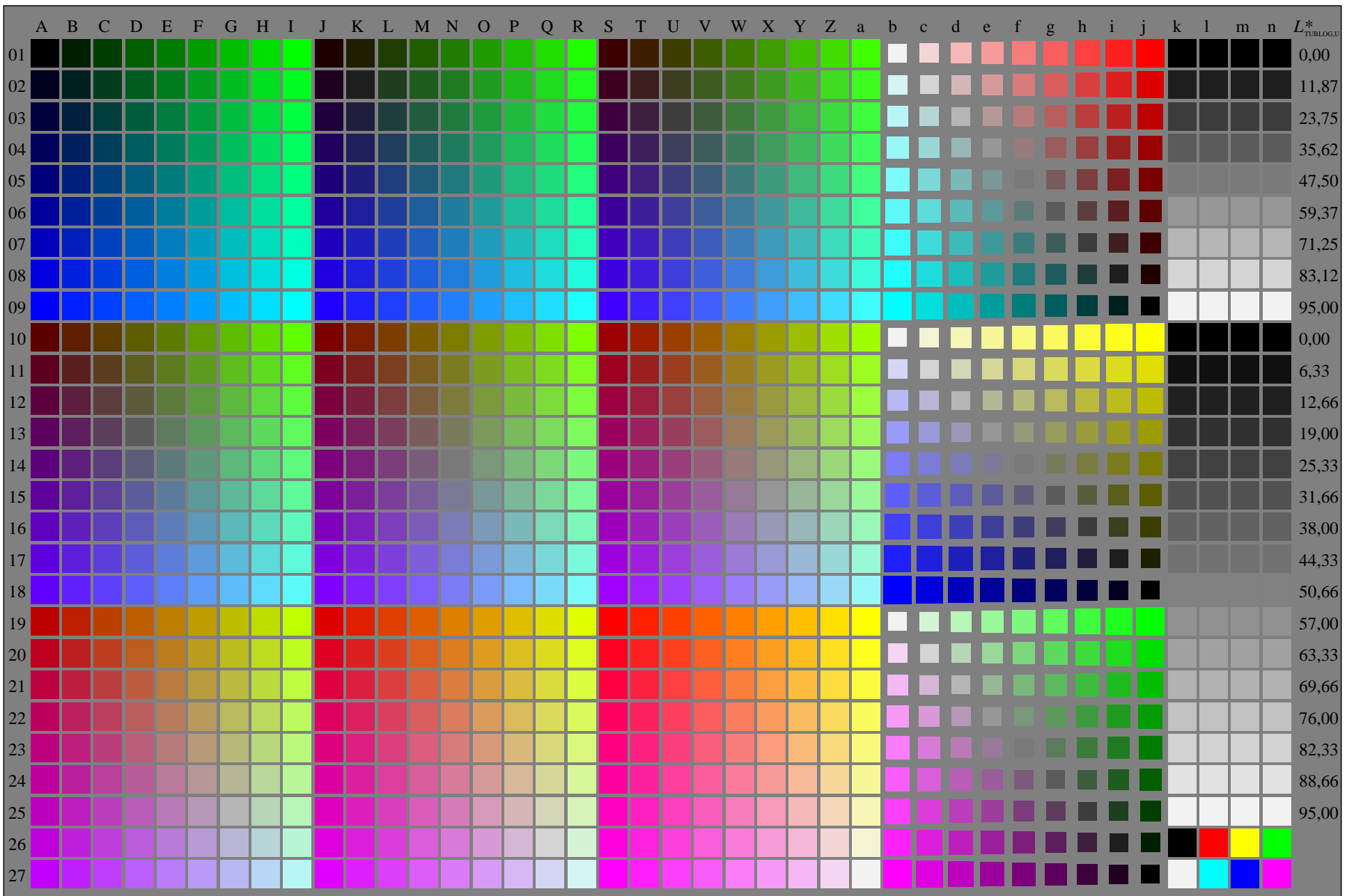


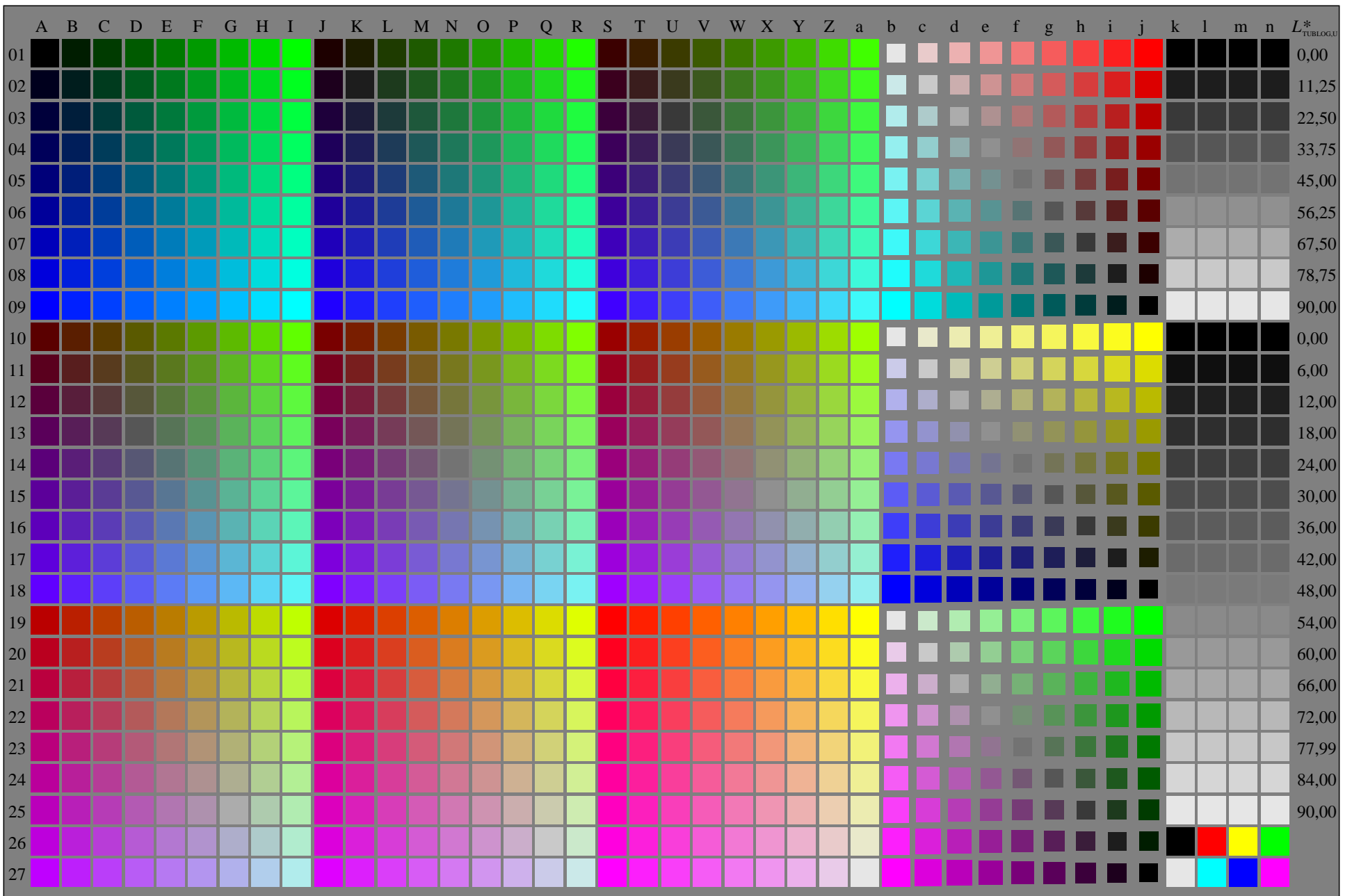
geu70-7A, 1/16, colorm=0, kk=0, nk=0, xchart=2, kx(kk)=1.0





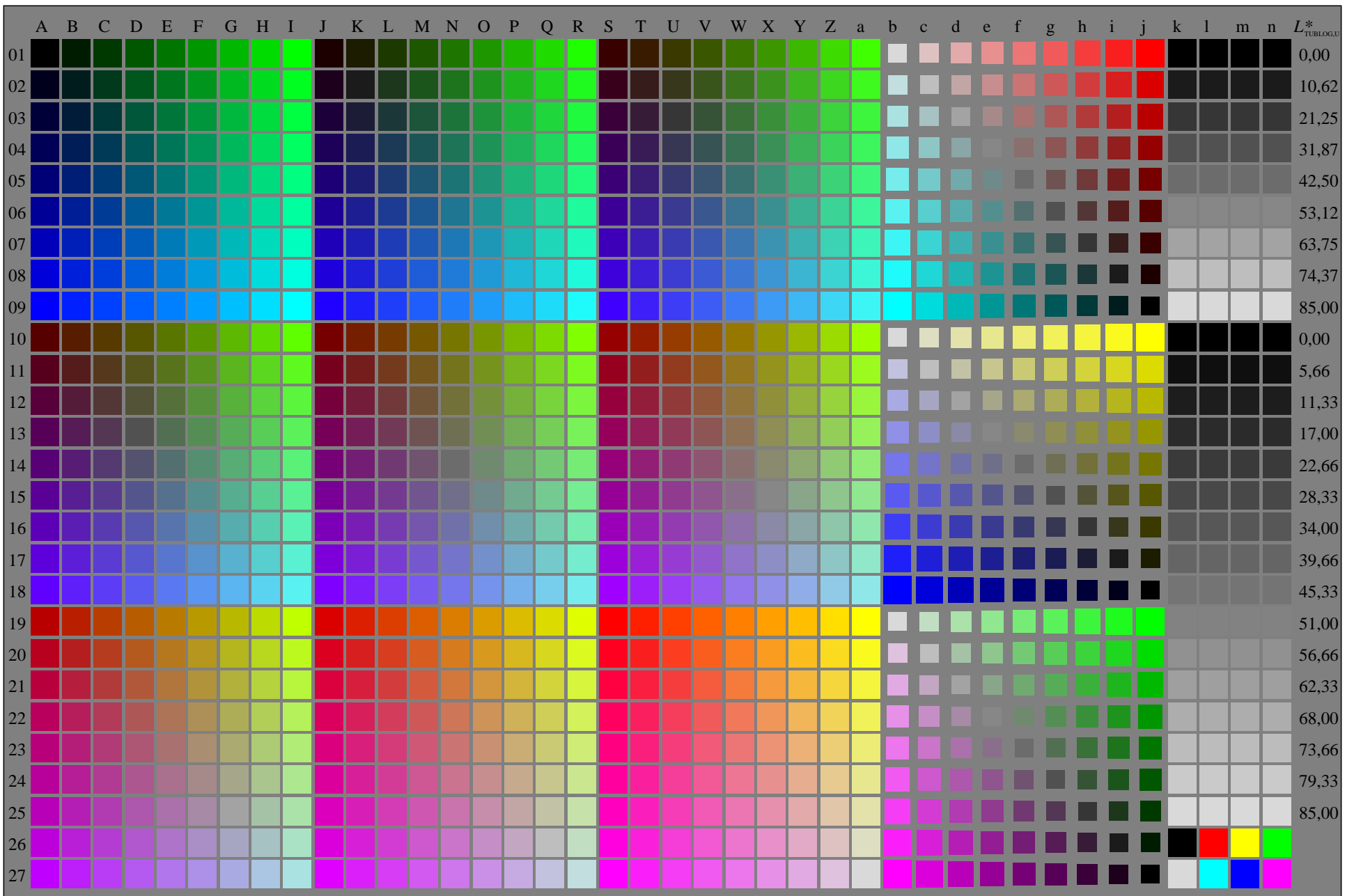
geu70-7A, 3/16, colorm=0, kk=1, nk=0, xchart=2, kx(kk)=0.95





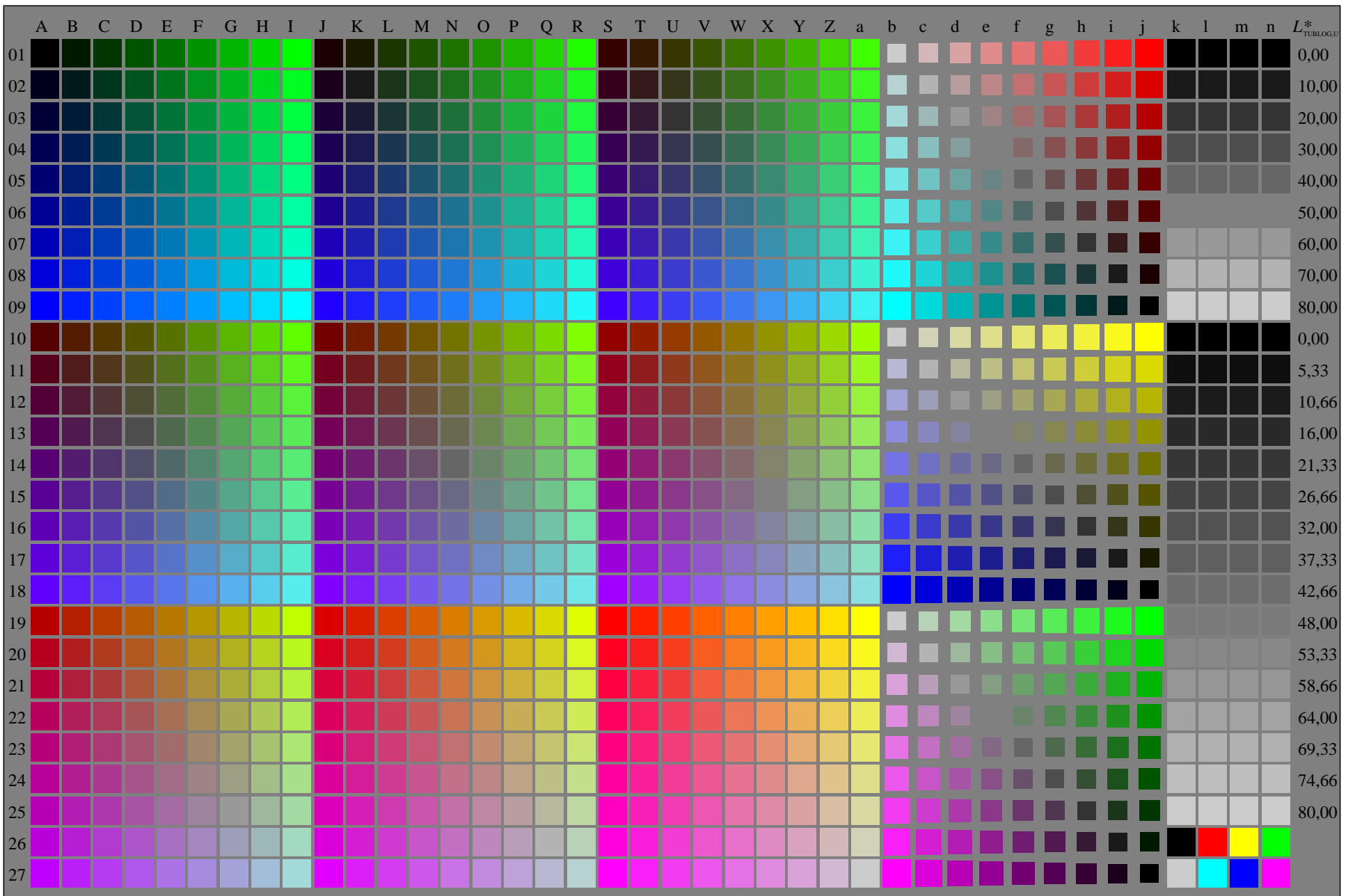
geu70-7A, 5/16, colorm=0, kk=2, nk=0, xchartl=2, kx(kk)=0.9













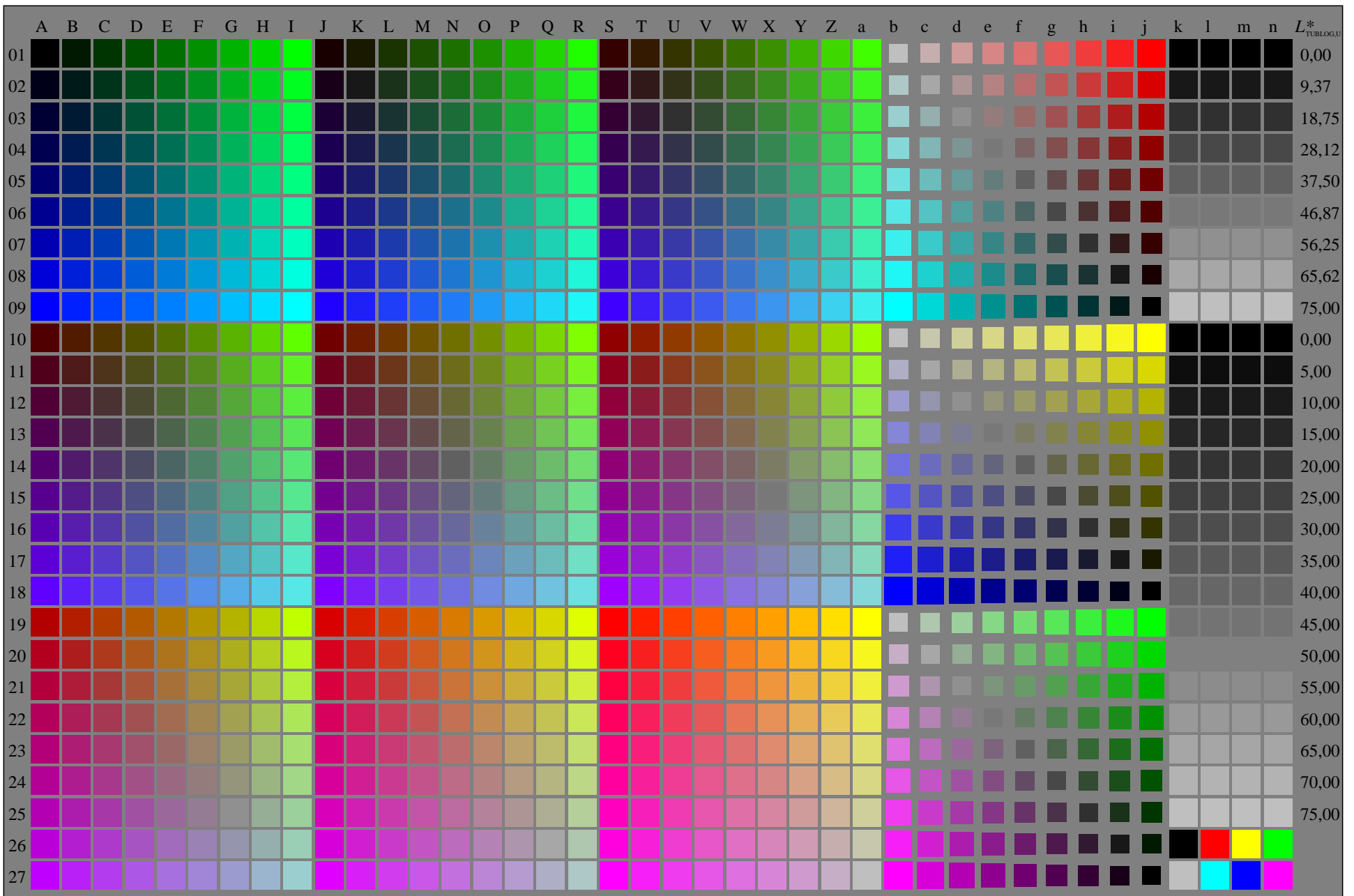
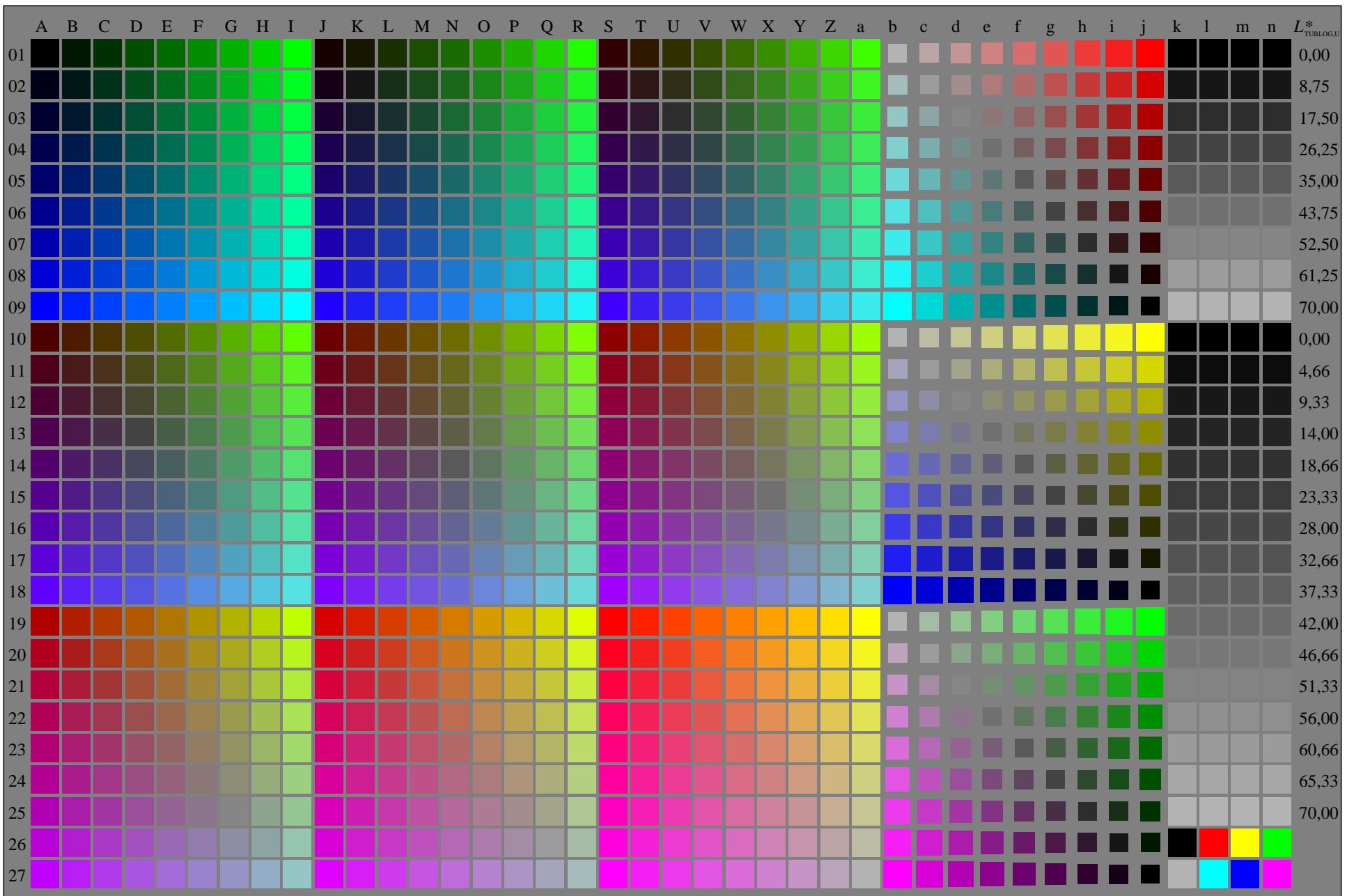
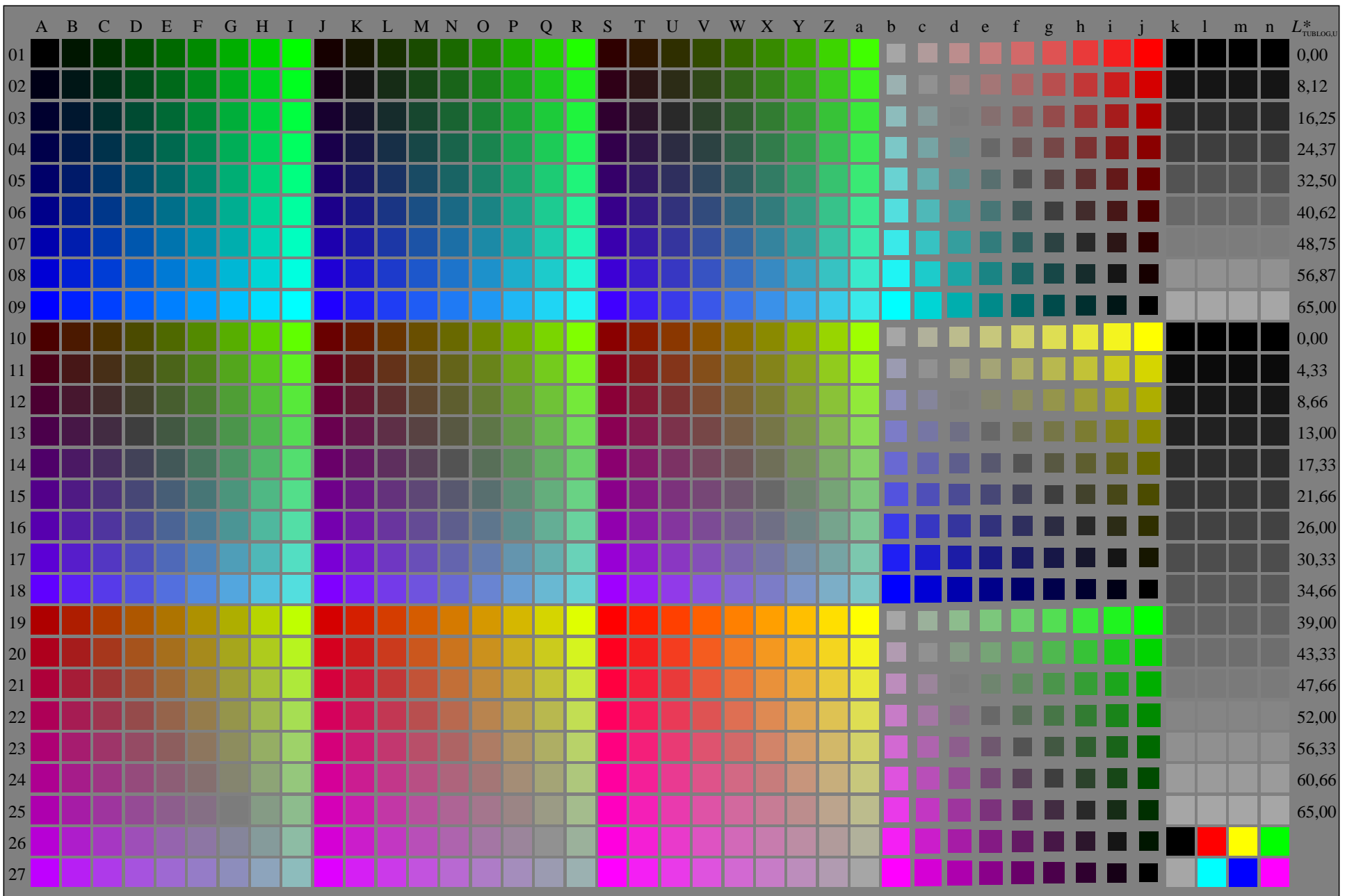


Table with 26 columns (A-Z) and 26 rows (0-25). Each cell contains a numerical value. The values are arranged in a grid that visually forms a large number '0.00' in the top-left, '9.37' in the top-right, '18.75' in the middle-right, '37.50' in the bottom-right, and '75.00' in the bottom-right. The numbers increase from top-left to bottom-right.



geu70-7A, 13/16, colorm=0, kk=6, nk=0, xchartl=2, kx(kk)=0.7





geu70-7A, 15/16, colorm=0, kk=7, nk=0, xchartl=2, kx(kk)=0.65

