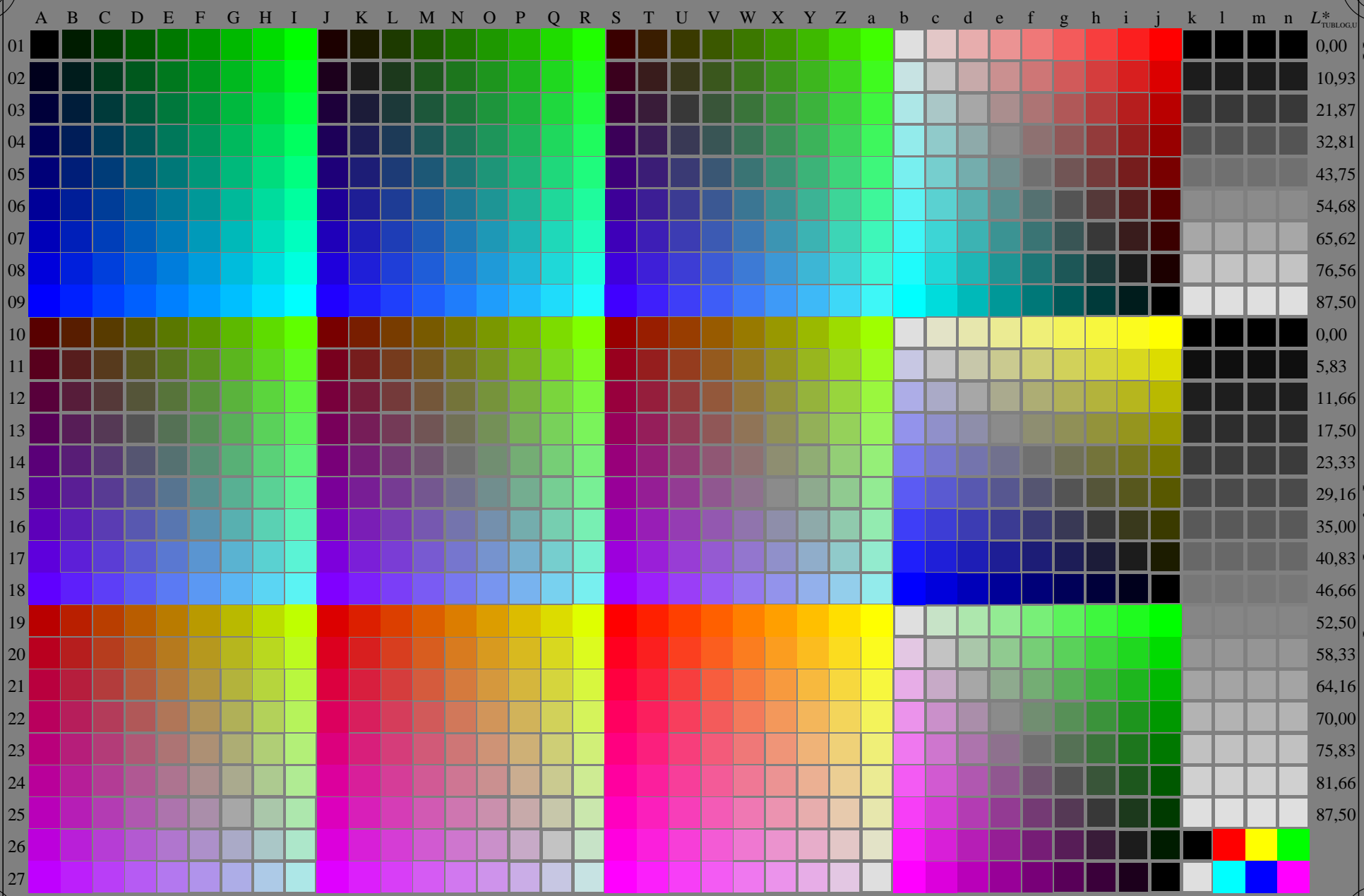


see similar files of the whole serie: <http://farbe.li.tu-berlin.de/geu3/geu3l0np.pdf> / .ps
technical information: <http://farbe.li.tu-berlin.de> or <http://color.li.tu-berlin.de>



TUB registration: 20240201-geu3/geu3l0np.pdf / .ps
application for evaluation and measurement of display or print output
TUB material: code=rh4ta

geu30-7N, 3/16, colorm=0, kk=1, nk=0, xchartl=2, kx(kk)=0.875

TUB-test chart geu3; Change of <http://standards.iso.org/iso/9241/306/ed-2/AE49/AE49L0NP.PDF>
Grey sample lightness decreases by a factor $R=0,875$, no change of RGBCMY, all values on next page

1=000200=F0