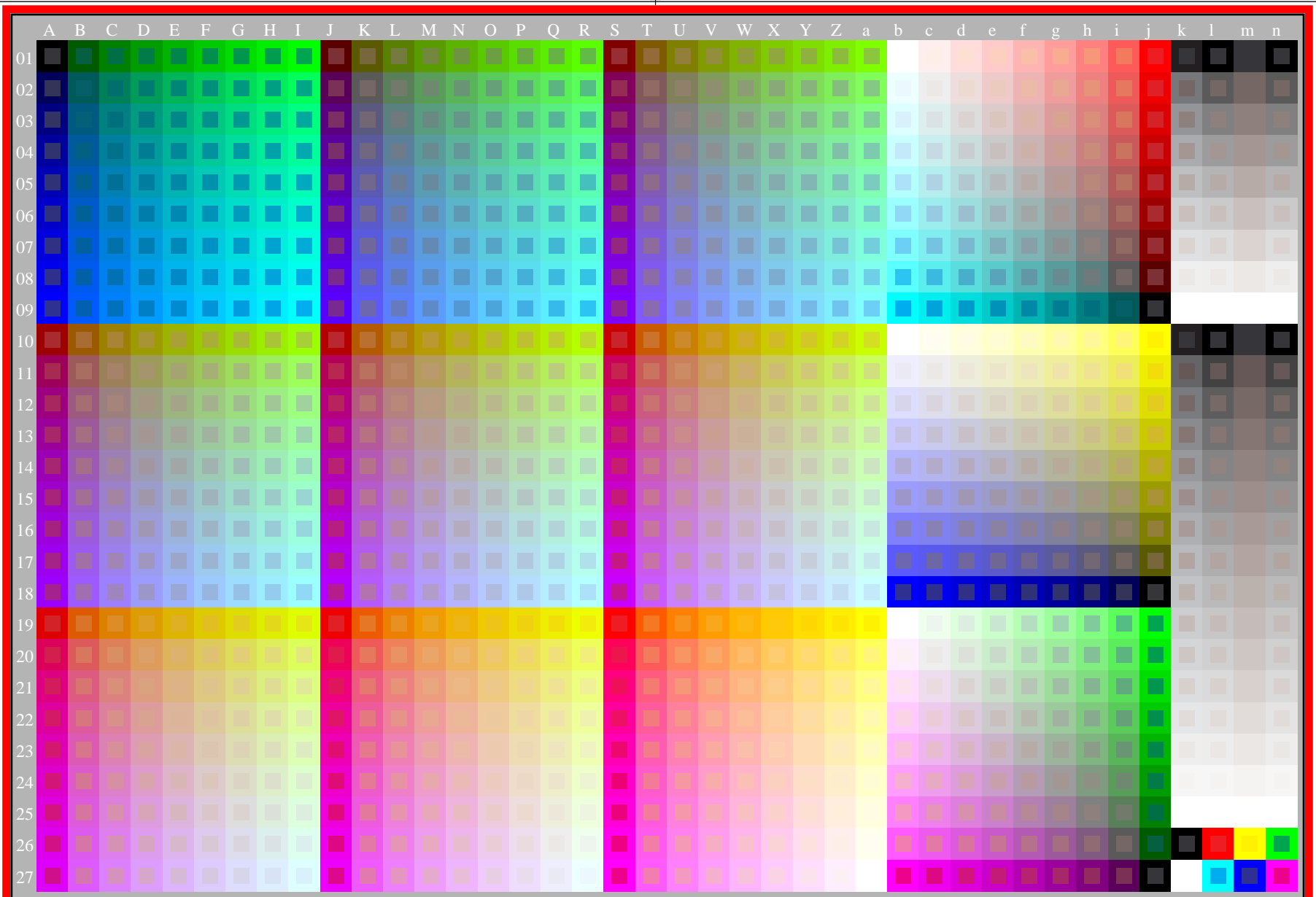


see gamma software and links to ISO-test charts <http://color.li.tu-berlin.de/eem1/eem1l0np.pdf>
technical information: <http://farbe.li.tu-berlin.de> or <http://color.li.tu-berlin.de>

TUB registration: 20230615-get9/get9l0np.pdf / .ps
application for evaluation and measurement of display or print output
TUB material: code=rh4ta



get90-7n, gamma values: $g_{rel}=0,500$, $g_{IEC_sRGB}=2,4$, $g_a=1,200$, rgb^* & w^* data, 1080 colours

get90-7n

TUB-test chart get9; Test charts with 9 step colour series for ergonomic linearized display output
Gamma optimization for 15 ambient display reflections according to ISO 9241-306; 15 different γ_{rel}

