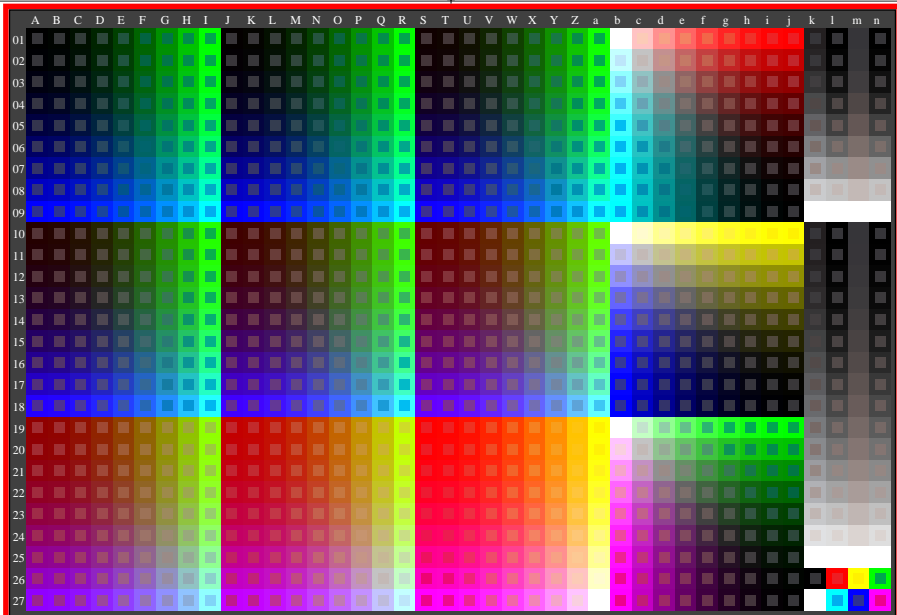


see gamma software and links to ISO-test charts <http://color.li.tu-berlin.de/eem1/eem110np.pdf>
 technical information: <http://farbe.li.tu-berlin.de> or <http://color.li.tu-berlin.de>

TUB registration: 2023-0615-get8/get810n1.txt /.ps
 application for evaluation and measurement of display or print output

TUB material: code=thata



get80-7n, gamma values: $g_{rel}=2,000$, $g_{IEC_sRGB}=2,4$, $g_a=4,800$, rgb^* & w^* data, 1080 colours

get80-7n