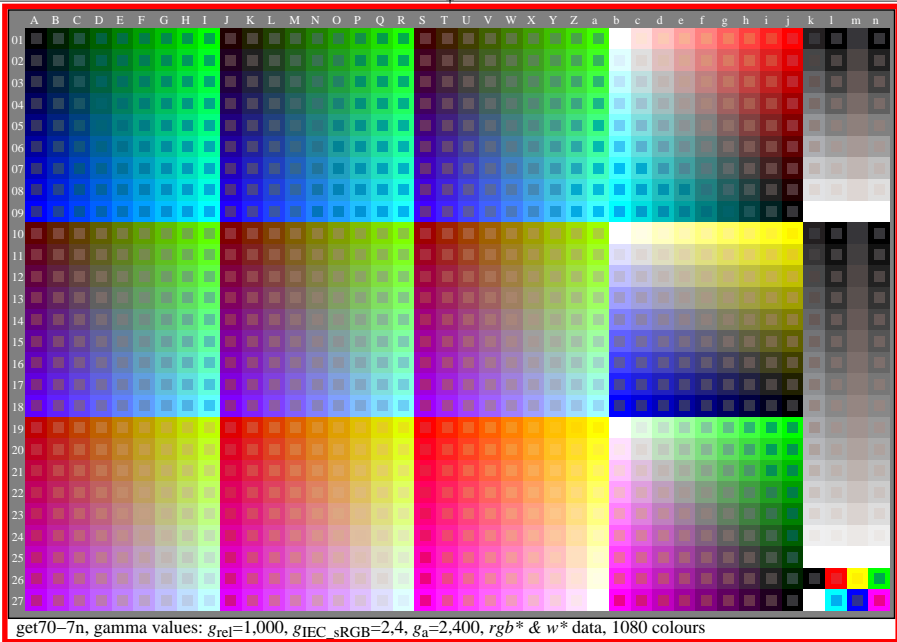


see gamma software and links to ISO-test charts <http://color.li.tu-berlin.de/eem1/eem1l0np.pdf>  
technical information: <http://farbe.li.tu-berlin.de> or <http://color.li.tu-berlin.de>

TUB registration: 20230615-get7/get7l0n1.txt /.ps  
application for evaluation and measurement of display or print output

TUB material: code=thata



get70-7n