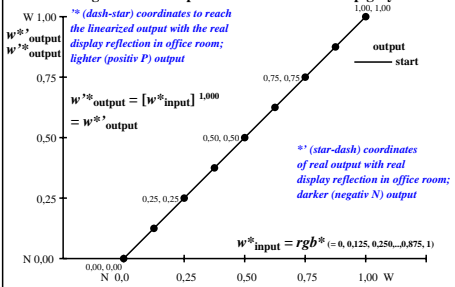
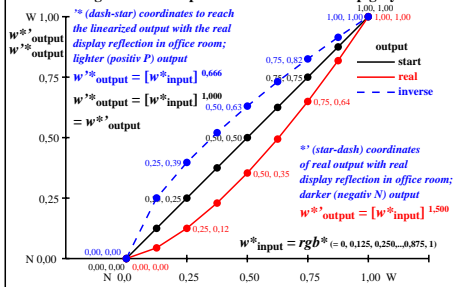


### Colour management for output linearization of a 9 step grey scale

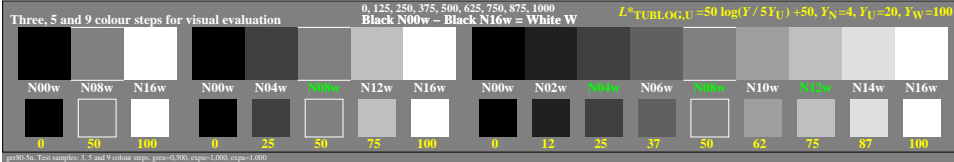


ger80-3n

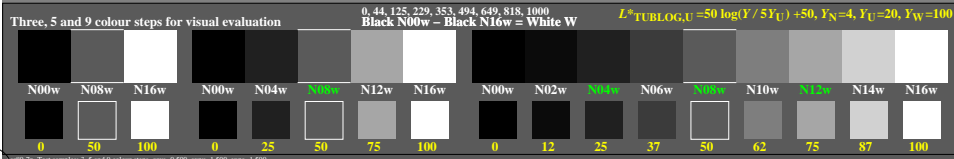
### Colour management for output linearization of a 9 step grey scale



ger81-3n



ger80-5n, Test samples: 3, 5 and 9 colour steps, greu=0,500, expu=1,000, expu=1,000



ger80-7n, Test samples: 3, 5 and 9 colour steps, greu=0,500, expu=1,500, expu=1,500

TUB-test chart ger8; This is an example text for many applications