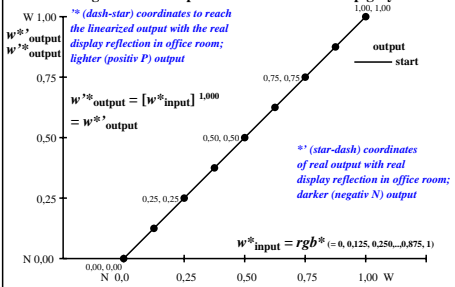
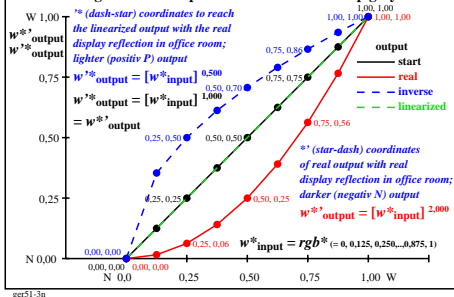


Colour management for output linearization of a 9 step grey scale



Colour management for output linearization of a 9 step grey scale



Three, 5 and 9 colour steps for visual evaluation

0, 125, 250, 375, 500, 625, 750, 875, 1000
Black N00w – Black N16w = White W

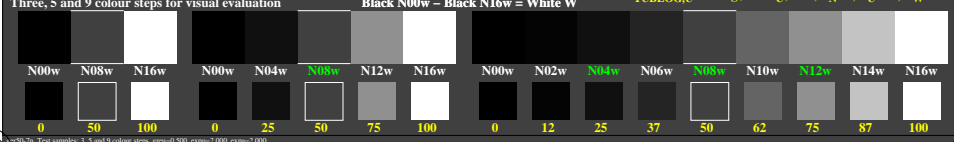
$L^*_{TUBLOG,U} = 50 \log(Y/5Y_U) + 50, Y_N=4, Y_U=20, Y_W=100$



Three, 5 and 9 colour steps for visual evaluation

0, 15, 62, 140, 250, 390, 562, 765, 1000
Black N00w – Black N16w = White W

$L^*_{TUBLOG,U} = 50 \log(Y/5Y_U) + 50, Y_N=4, Y_U=20, Y_W=100$



TUB-test chart ger5; This is an example text for many applications

see similar files of the whole series: <http://farbe.li.tu-berlin.de/ger5.htm>
technical information: <http://farbe.li.tu-berlin.de> or <http://color.li.tu-berlin.de>

TUB registration: 20240701-ger5/ger510n1.txt/.ps
application for evaluation and measurement of display or print output
TUB material: code=ha4ta