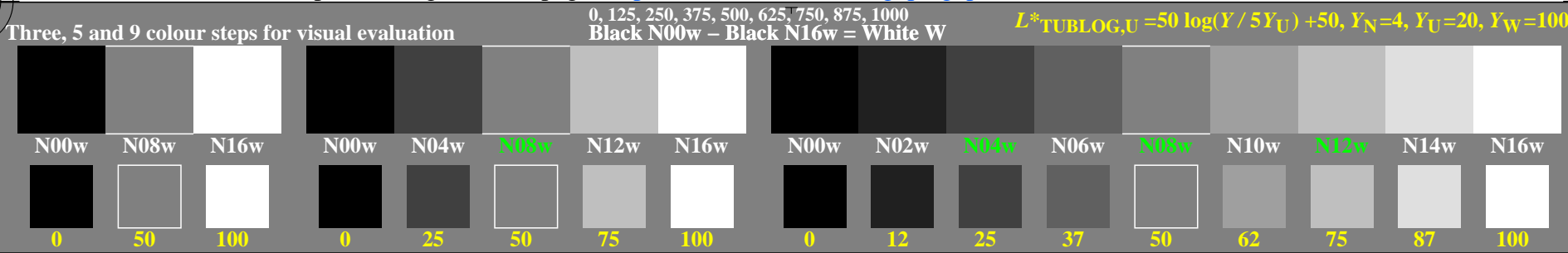
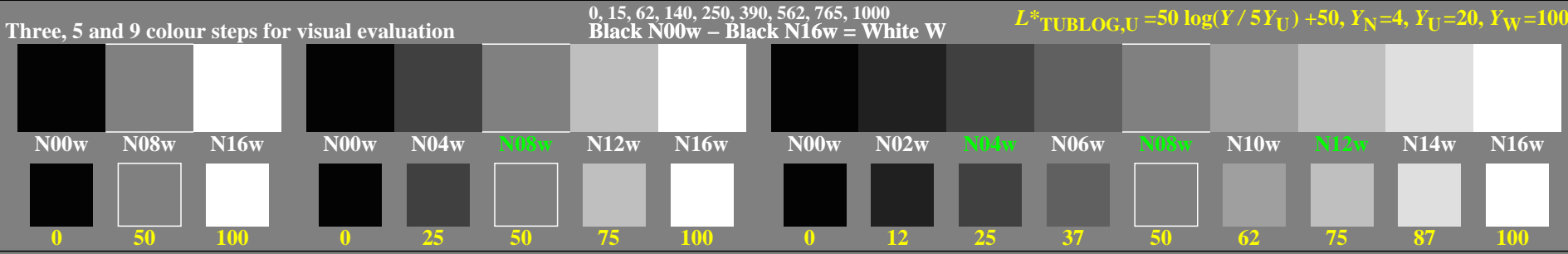


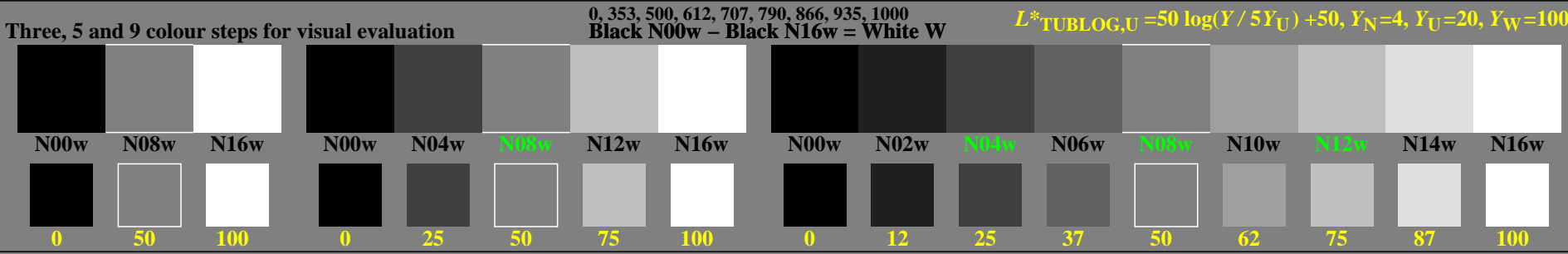
<http://farbe.li.tu-berlin.de/gep1/gep1l0na.txt> / .ps; only vector graphic VG; start output  
 see separate images of this page: <http://farbe.li.tu-berlin.de/gep1/gep1.htm>



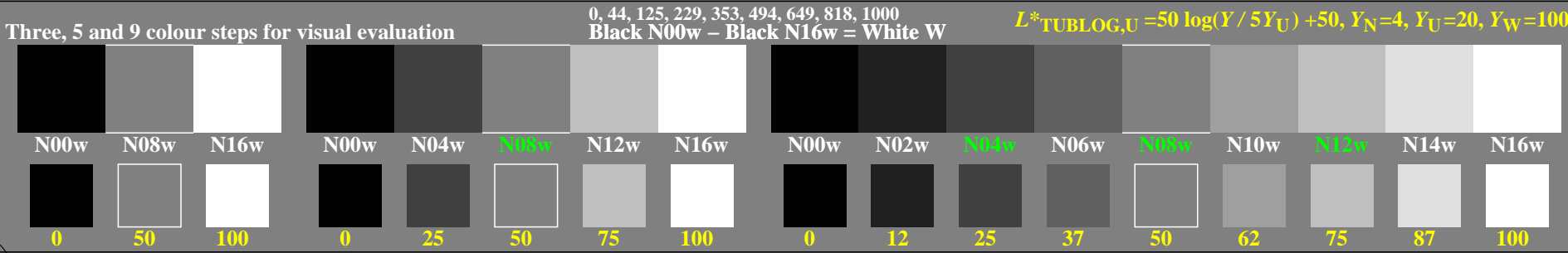
gep10-1n, Test samples: 3, 5 and 9 colour steps, greu=0,500, expu=1,000, expa=1,000



gep10-3n, Test samples: 3, 5 and 9 colour steps, greu=0,500, expu=2,000, expa=2,000



gep10-5n, Test samples: 3, 5 and 9 colour steps, greu=0,500, expu=0,500, expa=0,500



gep10-7n, Test samples: 3, 5 and 9 colour steps, greu=0,500, expu=1,500, expa=1,500

TUB-test chart gep1; Linearization code in FrameFile (FF) and Gamma (one line) in four files  
 inverse Gamma values 1, 0,5, 2, 0,6667 of the series N–W with 3, 5 and 9 steps

see similar files of the whole serie: <http://farbe.li.tu-berlin.de/geps.htm>  
 technical information: <http://farbe.li.tu-berlin.de> or <http://color.li.tu-berlin.de>

TUB registration: 20240701-gep1/gep1l0na.txt/.ps  
 application for evaluation and measurement of display or print output  
 TUB material: code=rh4ta