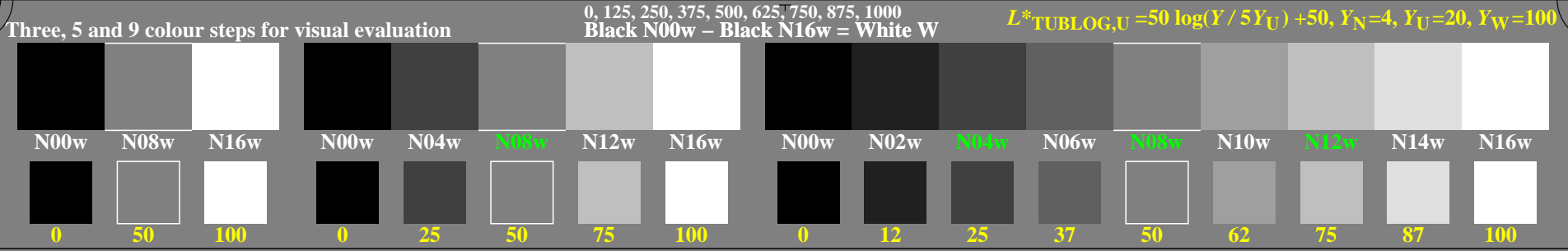
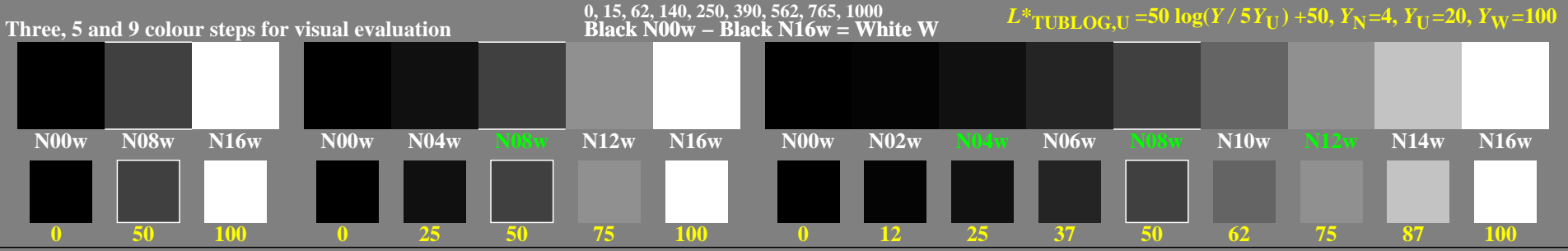


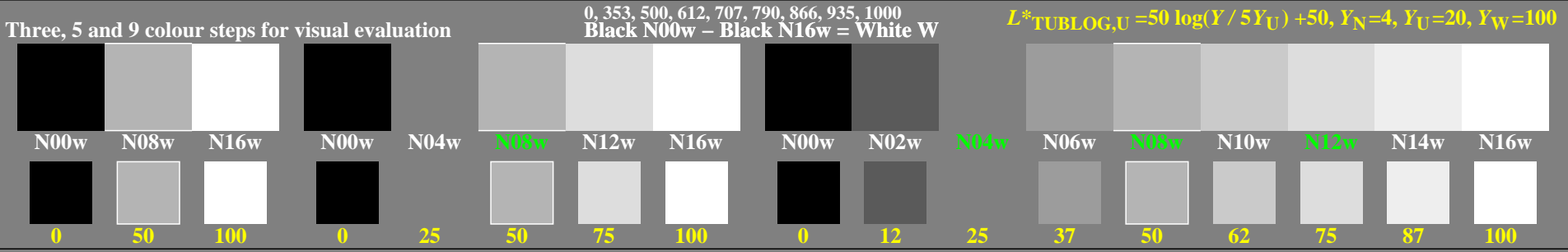
<http://farbe.li.tu-berlin.de/gen1/gen1l0na.txt> / .ps; only vector graphic VG; start output  
 see separate images of this page: <http://farbe.li.tu-berlin.de/gen1/gen1.htm>



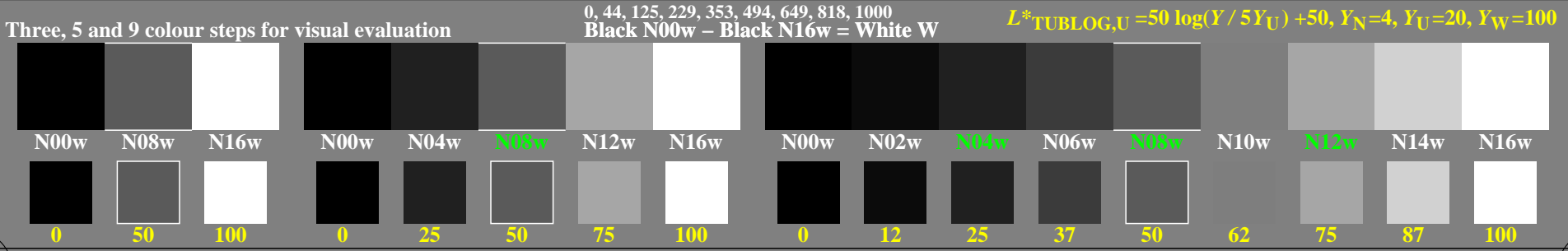
gen10-1n, Test samples: 3, 5 and 9 colour steps, greu=0.500, expu=1.000, expa=1.000



gen10-3n, Test samples: 3, 5 and 9 colour steps, greu=0.500, expu=1.000, expa=2.000



gen10-5n, Test samples: 3, 5 and 9 colour steps, greu=0.500, expu=1.000, expa=0.500



gen10-7n, Test samples: 3, 5 and 9 colour steps, greu=0.500, expu=1.000, expa=1.500

TUB-test chart gen1; Adjacent and separate colour samples for intervall scaling  
 Gamma values 1, 2, 0,5, 1,5 of the series N–W with 3, 5 and 9 steps; constant surround N08w

see similar files of the whole serie: <http://farbe.li.tu-berlin.de/gens.htm>  
 technical information: <http://farbe.li.tu-berlin.de> or <http://color.li.tu-berlin.de>

TUB registration: 20240701-gen1/gen1l0na.txt/.ps  
 application for evaluation and measurement of display or print output  
 TUB material: code=rh4ta