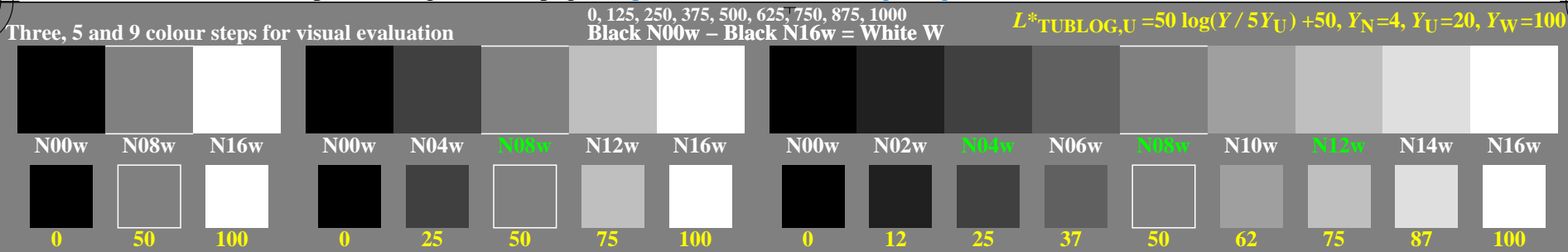
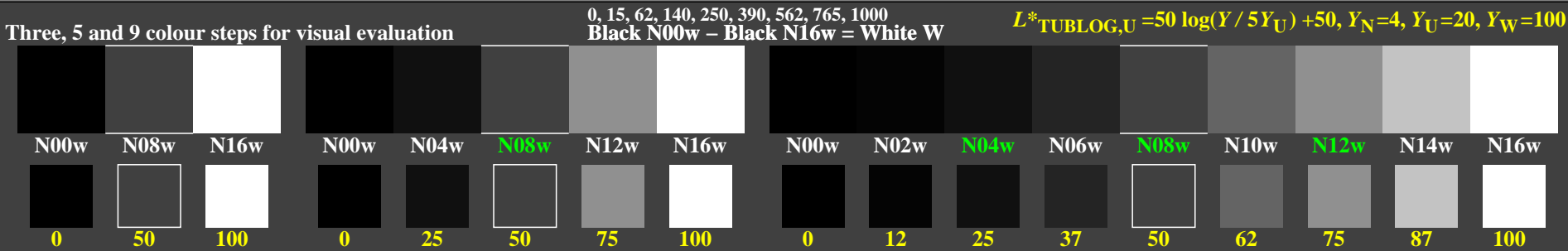


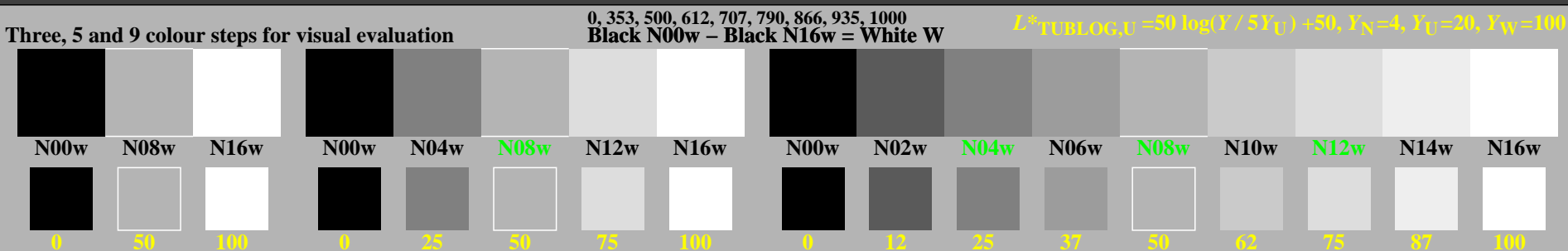
<http://farbe.li.tu-berlin.de/gen0/gen010np.pdf> / .ps; only vector graphic VG; start output
 see separate images of this page: <http://farbe.li.tu-berlin.de/gen0/gen0.htm>



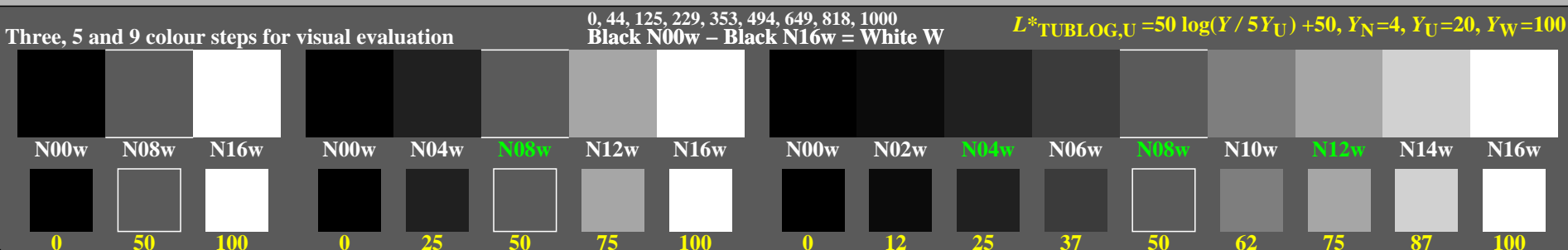
gen00-1n, Test samples: 3, 5 and 9 colour steps, greu=0,500, expu=1,000, expa=1,000



gen00-3n, Test samples: 3, 5 and 9 colour steps, greu=0,500, expu=2,000, expa=2,000



gen00-5n, Test samples: 3, 5 and 9 colour steps, greu=0,500, expu=0,500, expa=0,500



gen00-7n, Test samples: 3, 5 and 9 colour steps, greu=0,500, expu=1,500, expa=1,500

TUB-test chart gen0; Adjacent and separate colour samples for intervall scaling
 Gamma values 1, 2, 0,5, 1,5 of the series N–W with 3, 5 and 9 steps; U=N08w, N04w, N12w, N06w

see similar files of the whole serie: <http://farbe.li.tu-berlin.de/gens.htm>
 technical information: <http://farbe.li.tu-berlin.de> or <http://color.li.tu-berlin.de>

TUB registration: 20240701-gen0/gen010np.pdf / .ps
 application for evaluation and measurement of display or print output
 TUB material: code=rh4ta