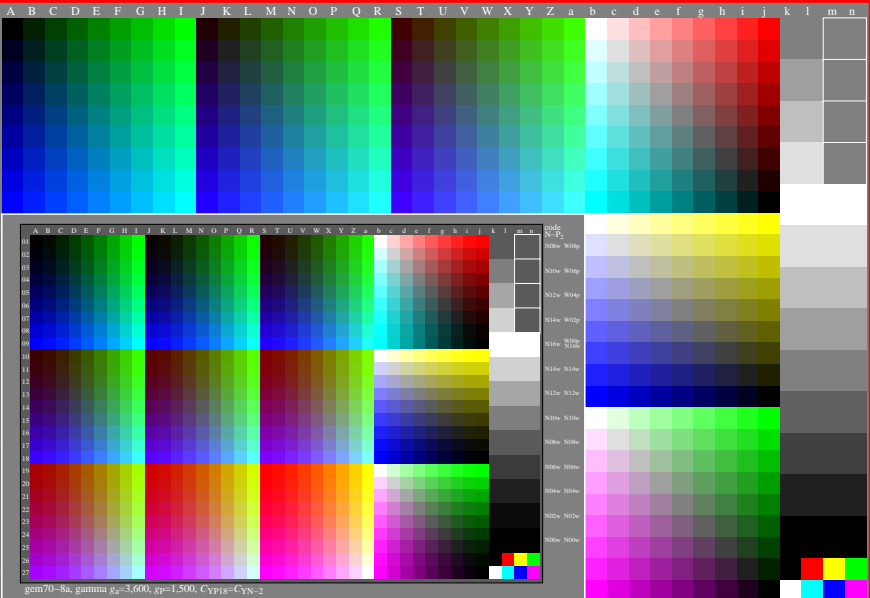


<http://farbe.li.tu-berlin.de/gem7/gem710n1.txt/.ps>; only vector graphic VG;  
see separate images of this page: <http://farbe.li.tu-berlin.de/gem7/gem7.htm>

see similar files of the whole series: <http://farbe.li.tu-berlin.de/gem5.htm>  
technical information: <http://farbe.li.tu-berlin.de> or <http://color.li.tu-berlin.de>



gem70-8a, gamma  $g_a=3,600$ ,  $g_p=1,500$ ,  $C_{YP18}=C_{YN-2}$

gem70-8a, gamma  $g_a=2,400$ ,  $g_p=1,000$ ,  $C_{YP8}=C_{YN8}$

TUB-test chart gem7; Test charts with 5 and 9 step colours for linearized display output, Gamma optimization for 15 ambient display reflections according to ISO 9241-306; with image;  $\gamma_{rel}=1,000$

TUB registration: 20240701\_gem7/gem710n1.txt/.ps  
application for evaluation and measurement of display or print output

TUB material: code=thada4