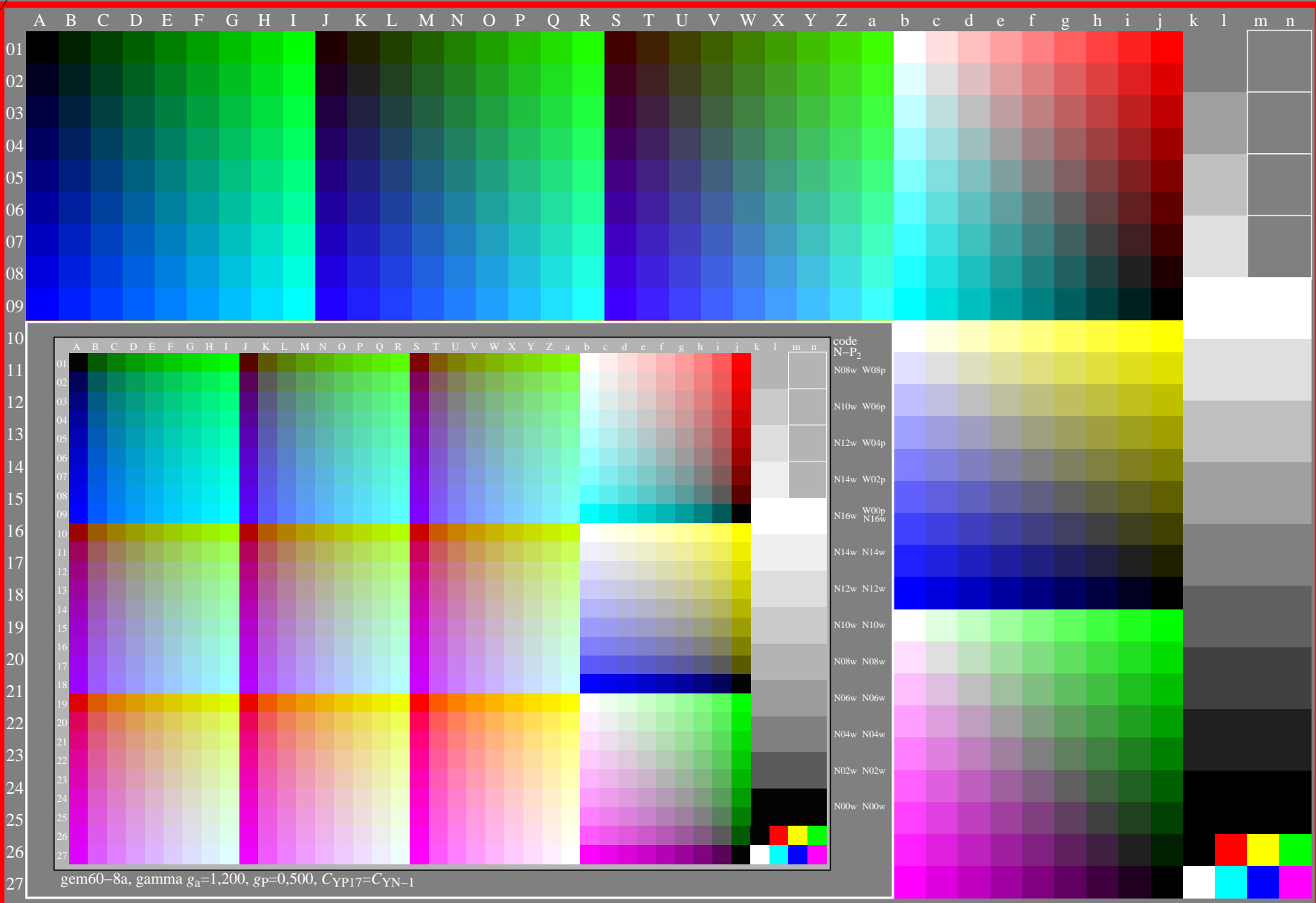


<http://farbe.li.tu-berlin.de/gem6/gem6l0np.pdf> /.ps; only vector graphic VG;  
see separate images of this page: <http://farbe.li.tu-berlin.de/gem6/gem6.htm>

see similar files of the whole serie: <http://farbe.li.tu-berlin.de/gems.htm>  
technical information: <http://farbe.li.tu-berlin.de> or <http://color.li.tu-berlin.de>

TUB registration: 20240701-gem6/gem6l0np.pdf/.ps  
application for evaluation and measurement of display or print output  
TUB material: code=thata4ta



gem6-8a, gamma  $g_a=1,200$ ,  $g_p=0,500$ ,  $C_{YP17}=C_{YN-1}$   
gem6-8a, gamma  $g_a=2,400$ ,  $g_p=1,000$ ,  $C_{YP8}=C_{YN8}$

TUB-test chart gem6; Test charts with 5 and 9 step colours for linearized display output, Gamma optimization for 15 ambient display reflections according to ISO 9241-306; with image;  $\gamma_{rel}=1,000$