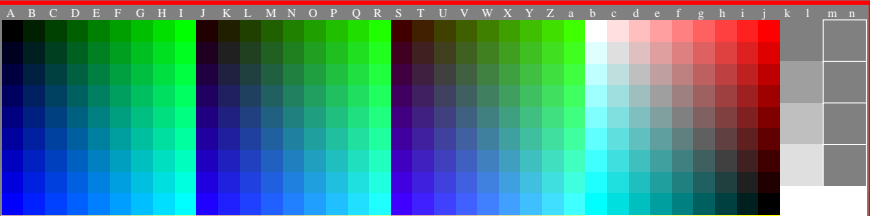


<http://farbe.li.tu-berlin.de/gem6/gem6l0n1.txt/.ps>; only vector graphic VG;  
see separate images of this page: <http://farbe.li.tu-berlin.de/gem6/gem6.htm>

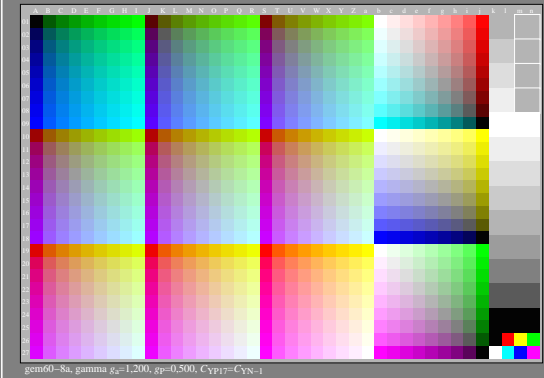
see similar files of the whole serie: <http://farbe.li.tu-berlin.de/gem5.htm>  
technical information: <http://farbe.li.tu-berlin.de> or <http://color.li.tu-berlin.de>



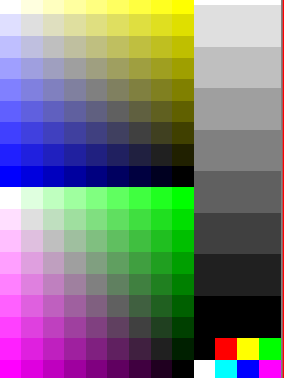
code  
N-P<sub>2</sub>  
N08w W08p  
N10w W06p  
N12w W04p  
N14w W02p  
N16w W00p  
N16w

TUB registration: 20240701\_gem6/gem6l0n1.txt/.ps  
application for evaluation and measurement of display or print output

TUB material: code=thada4



code  
N-P<sub>2</sub>  
N08w W08p  
N10w W06p  
N12w W04p  
N14w W02p  
N16w W00p  
N16w  
N14w N14w  
N12w N12w  
N10w N10w  
N08w N08w  
N06w N06w  
N04w N04w  
N02w N02w  
N00w N00w



gem60-8a, gamma  $g_a=2,400$ ,  $g_p=1,000$ ,  $C_{YP8}=C_{YN8}$

TUB-test chart gem6; Test charts with 5 and 9 step colours for linearized display output, Gamma optimization for 15 ambient display reflections according to ISO 9241-306; with image;  $\gamma_{rel}=1,000$