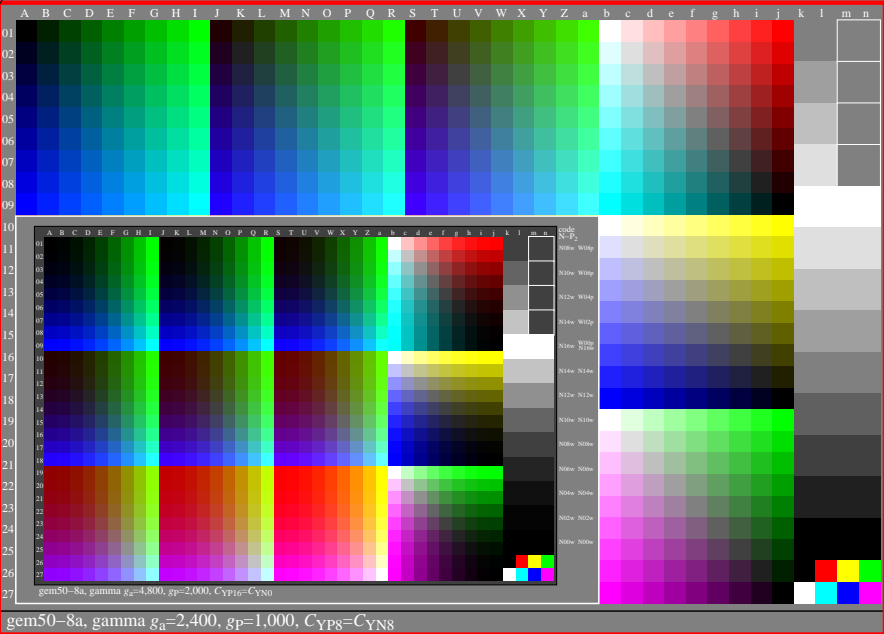


<http://farbe.li.tu-berlin.de/gem5/gem510n1.txt/.ps>; only vector graphic VG;
 see separate images of this page: <http://farbe.li.tu-berlin.de/gem5/gem5.htm>

see similar files of the whole series: <http://farbe.li.tu-berlin.de/gem5.htm>
 technical information: <http://farbe.li.tu-berlin.de> or <http://color.li.tu-berlin.de>

TUB registration: 20240701_gem5/gem510n1.txt/.ps
 application for evaluation and measurement of display or print output
 TUB material: code=thadta



gem50-8a, gamma $g_a=2,400$, $g_p=1,000$, $C_{YP8}=C_{YN8}$

TUB-test chart gem5; Test charts with 5 and 9 step colours for linearized display output, Gamma optimization for 15 ambient display reflections according to ISO 9241-306; with image; $\gamma_{rel}=1,000$