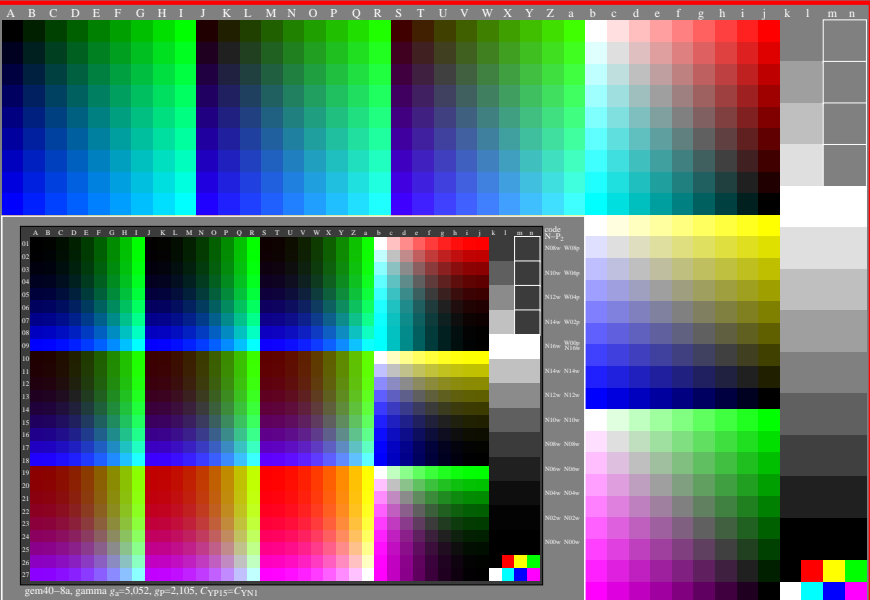


<http://farbe.li.tu-berlin.de/gem4/gem410n1.txt/.ps>; only vector graphic VG;
see separate images of this page: <http://farbe.li.tu-berlin.de/gem4/gem4.htm>

see similar files of the whole series: <http://farbe.li.tu-berlin.de/gem5.htm>
technical information: <http://farbe.li.tu-berlin.de> or <http://color.li.tu-berlin.de>



gem40-8a, gamma $g_a=5,052$, $g_p=2,105$, $C_{YP15}=C_{YN1}$

gem40-8a, gamma $g_a=2,400$, $g_p=1,000$, $C_{YP8}=C_{YN8}$

TUB-test chart gem4; Test charts with 5 and 9 step colours for linearized display output, Gamma optimization for 15 ambient display reflections according to ISO 9241-306; without image; $\gamma_{rel}=2,105$

TUB registration: 20240701_gem4/gem410n1.txt/.ps
application for evaluation and measurement of display or print output

TUB material: code=rh4ta