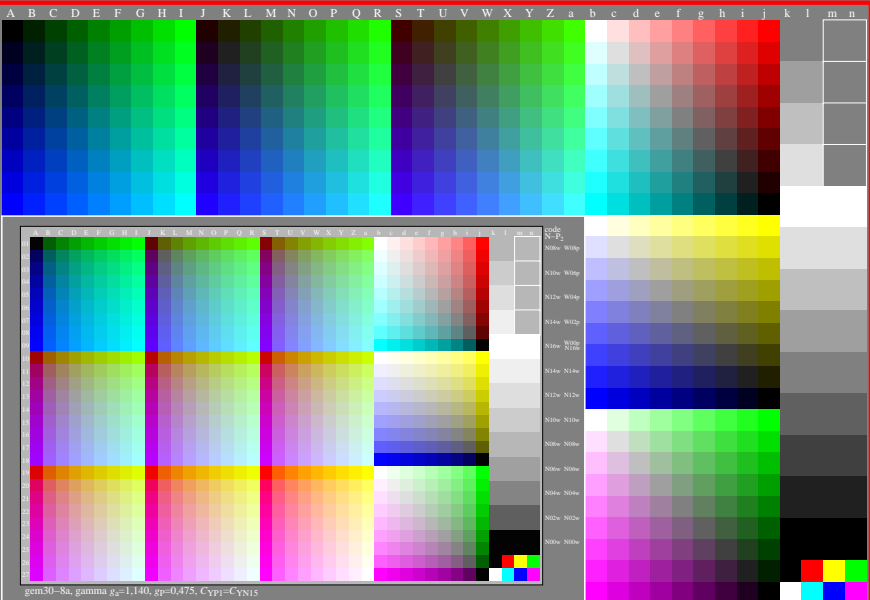


<http://farbe.li.tu-berlin.de/gem3/gem310n1.txt/.ps>; only vector graphic VG;
see separate images of this page: <http://farbe.li.tu-berlin.de/gem3/gem3.htm>

see similar files of the whole serie: <http://farbe.li.tu-berlin.de/gem3.htm>
technical information: <http://farbe.li.tu-berlin.de> or <http://color.li.tu-berlin.de>



code	N-P ₂
N08w	W08p
N10w	W06p
N12w	W04p
N14w	W02p
N16w	W00p
N16w	N16w
N14w	N14w
N12w	N12w
N10w	N10w
N14w	N14w
N08w	N08w
N12w	N12w
N10w	N10w
N08w	N08w
N06w	N06w
N04w	N04w
N06w	N06w
N04w	N04w
N02w	N02w
N00w	N00w

gem30-8a, gamma $g_a=1,140$, $g_p=0,475$, $C_{YP1}=C_{YN15}$

gem30-8a, gamma $g_a=2,400$, $g_p=1,000$, $C_{YP8}=C_{YN8}$

TUB-test chart gem3; Test charts with 5 and 9 step colours for linearized display output, Gamma optimization for 15 ambient display reflections according to ISO 9241-306; without image; $\gamma_{rel}=0,475$

TUB registration: 20240701_gem3/gem310n1.txt/.ps
application for evaluation and measurement of display or print output
TUB material: code=thada4