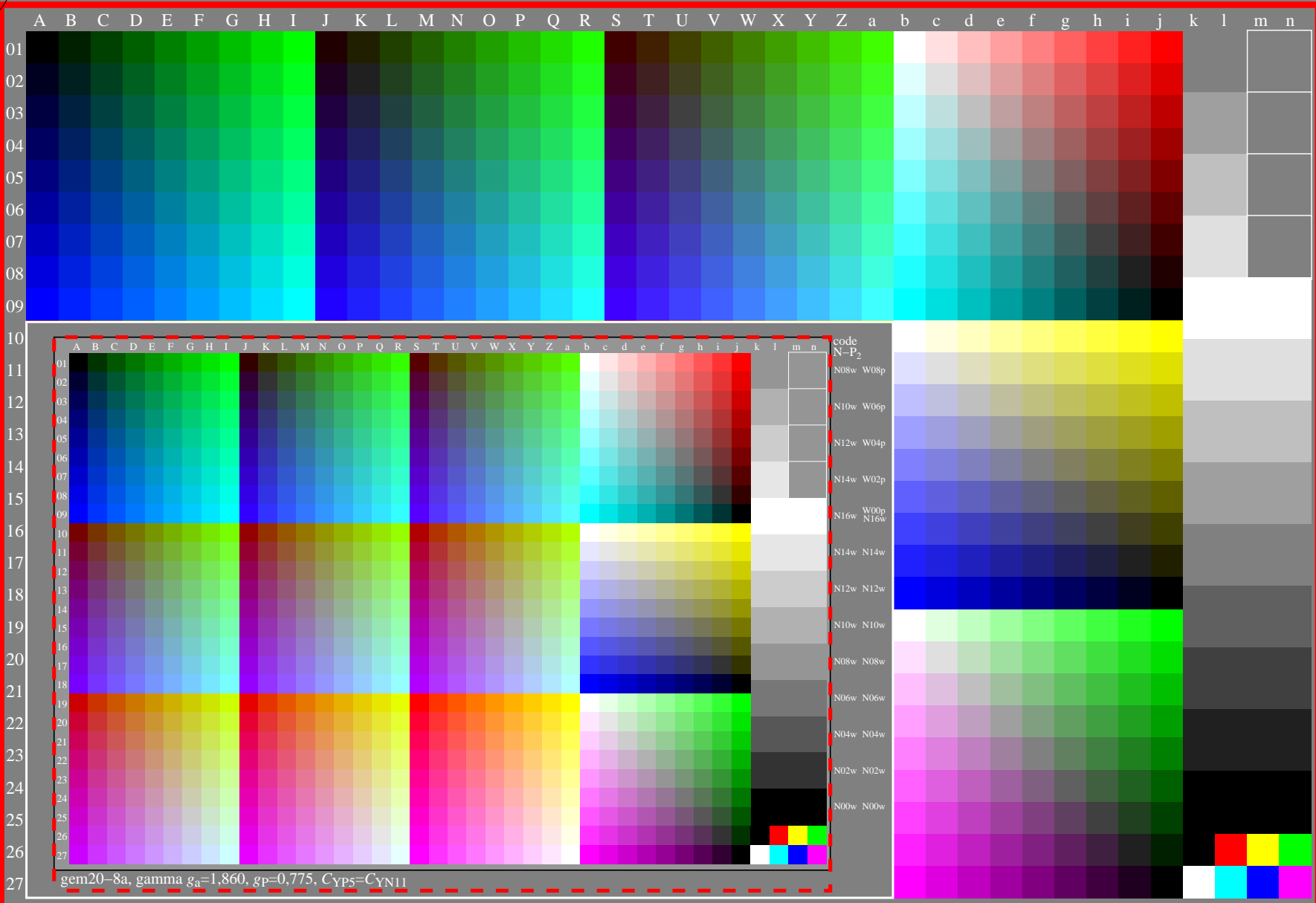


<http://farbe.li.tu-berlin.de/gem2/gem2l0np.pdf> /.ps; only vector graphic VG;
see separate images of this page: <http://farbe.li.tu-berlin.de/gem2/gem2.htm>

see similar files of the whole serie: <http://farbe.li.tu-berlin.de/gems.htm>
technical information: <http://farbe.li.tu-berlin.de> or <http://color.li.tu-berlin.de>



gem20-8a, gamma $g_a=2,400$, $g_p=1,000$, $C_{YP8}=C_{YN8}$

TUB-test chart gem2; Test charts with 5 and 9 step colours for linearized display output, Gamma optimization for 15 ambient display reflections according to ISO 9241-306; without image; $\gamma_{rel}=0,775$

TUB registration: 20240701-gem2/gem2l0np.pdf/.ps
application for evaluation and measurement of display or print output
TUB material: code=rh4ta