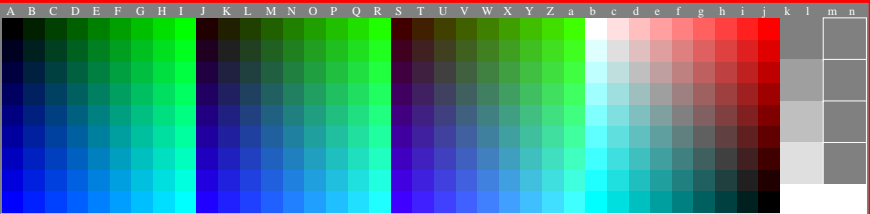


<http://farbe.li.tu-berlin.de/gem2/gem210n1.txt/.ps>; only vector graphic VG;
see separate images of this page: <http://farbe.li.tu-berlin.de/gem2/gem2.htm>

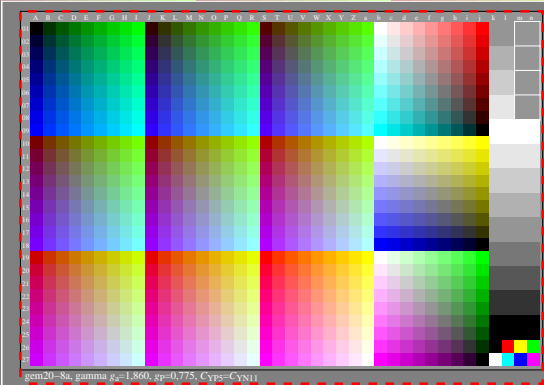
see similar files of the whole serie: <http://farbe.li.tu-berlin.de/gem3.htm>
technical information: <http://farbe.li.tu-berlin.de> or <http://color.li.tu-berlin.de>



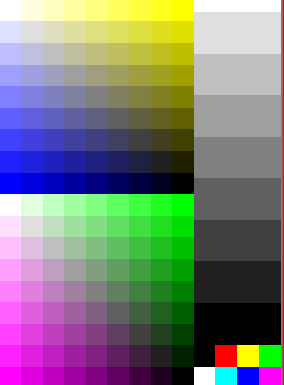
code
N-P₂
N08w W08p
N10w W06p
N12w W04p
N14w W02p
N16w W00p
N16w

TUB registration: 20240701_gem2/gem210n1.txt/.ps
application for evaluation and measurement of display or print output

TUB material: code=thad4a



code
N-P₂
N08w W08p
N10w W06p
N12w W04p
N14w W02p
N16w W00p
N16w
N14w N14w
N12w N12w
N10w N10w
N08w N08w
N06w N06w
N04w N04w
N02w N02w
N00w N00w



gem20-8a, gamma $g_a=1,860$, $g_p=0,775$, $C_{YP8}=C_{YN11}$

gem20-8a, gamma $g_a=2,400$, $g_p=1,000$, $C_{YP8}=C_{YN8}$

TUB-test chart gem2; Test charts with 5 and 9 step colours for linearized display output, Gamma optimization for 15 ambient display reflections according to ISO 9241-306; without image; $\gamma_{rel}=0,775$