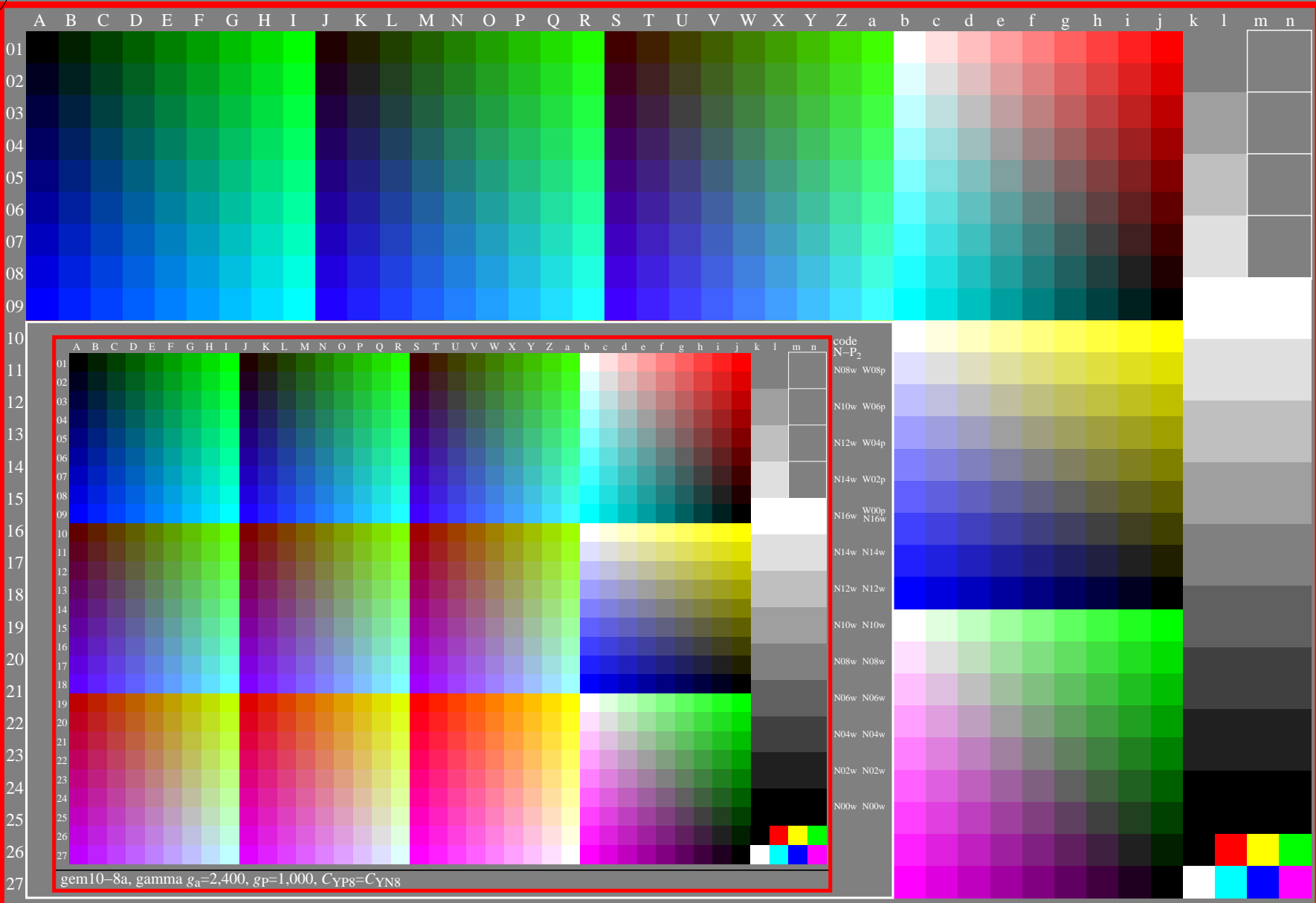


<http://farbe.li.tu-berlin.de/gem1/gem1l0np.pdf> /.ps; only vector graphic VG;  
see separate images of this page: <http://farbe.li.tu-berlin.de/gem1/gem1.htm>

see similar files of the whole serie: <http://farbe.li.tu-berlin.de/gems.htm>  
technical information: <http://farbe.li.tu-berlin.de> or <http://color.li.tu-berlin.de>



code  
N-P<sub>2</sub>  
N08w W08p  
N10w W06p  
N12w W04p  
N14w W02p  
N16w W00p  
N16w  
N14w N14w  
N12w N12w  
N10w N10w  
N14w N14w  
N08w N08w  
N12w N12w  
N10w N10w  
N08w N08w  
N06w N06w  
N04w N04w  
N02w N02w  
N00w N00w

gem10-8a, gamma  $g_a=2,400$ ,  $g_p=1,000$ ,  $C_{YP8}=C_{YN8}$

TUB-test chart gem1; Test charts with 5 and 9 step colours for linearized display output, Gamma optimization for 15 ambient display reflections according to ISO 9241-306; without image;  $\gamma_{rel}=1,000$

TUB registration: 20240701-gem1/gem1l0np.pdf/.ps  
application for evaluation and measurement of display or print output  
TUB material: code=rh4ta