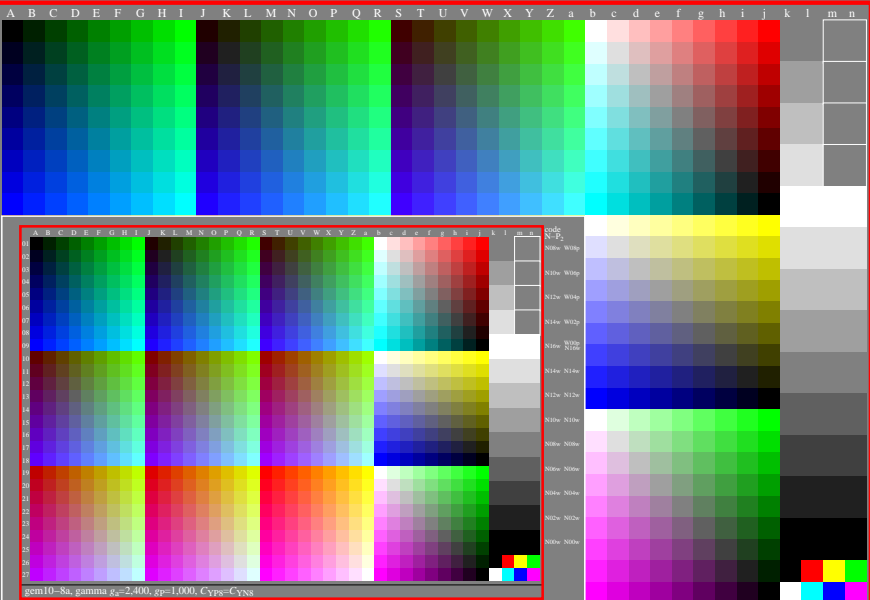


<http://farbe.li.tu-berlin.de/gem1/gem110n1.txt/.ps>; only vector graphic VG;
 see separate images of this page: <http://farbe.li.tu-berlin.de/gem1/gem1.htm>

see similar files of the whole serie: <http://farbe.li.tu-berlin.de/gem1.htm>
 technical information: <http://farbe.li.tu-berlin.de> or <http://color.li.tu-berlin.de>



code
 N-P₂
 N08w W08p
 N10w W06p
 N12w W04p
 N14w W02p
 N16w W00p
 N16w
 N14w N14w
 N12w N12w
 N10w N10w
 N08w N08w
 N06w N06w
 N04w N04w
 N02w N02w
 N00w N00w

TUB registration: 20240701_gem1/gem110n1.txt/.ps
 application for evaluation and measurement of display or print output
 TUB material: code=thadta

gem10-8a, gamma $g_a=2,400$, $g_p=1,000$, $C_{YP8}=C_{YN8}$

TUB-test chart gem1; Test charts with 5 and 9 step colours for linearized display output, Gamma optimization for 15 ambient display reflections according to ISO 9241-306; without image; $\gamma_{rel}=1,000$