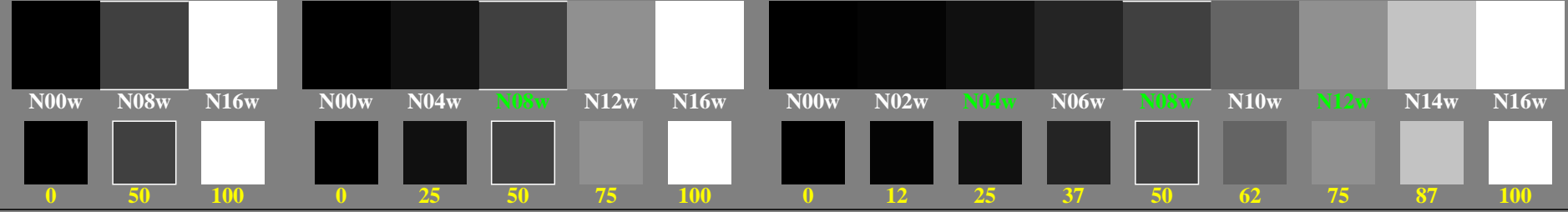
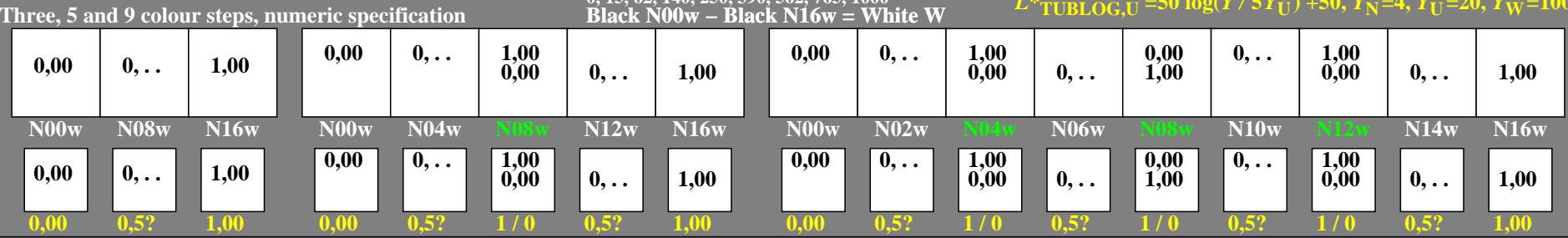


<http://farbe.li.tu-berlin.de/gel7/gel710np.pdf> / .ps; only vector graphic VG; start output
 see separate images of this page: <http://farbe.li.tu-berlin.de/gel7/gel7.htm>

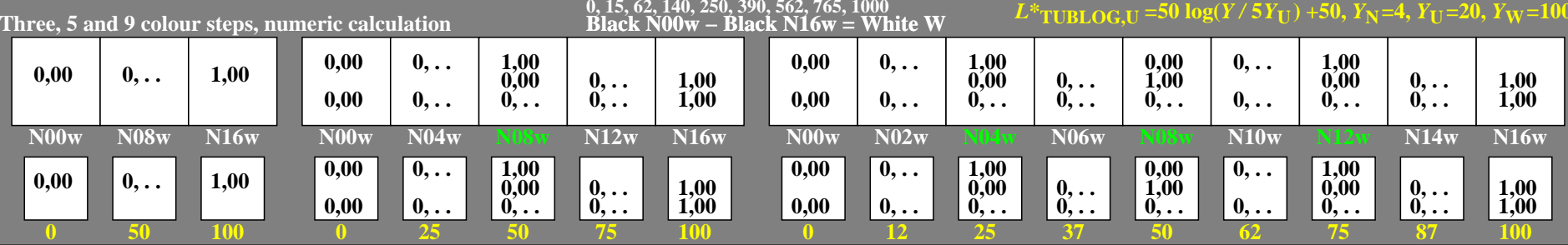
Three, 5 and 9 colour steps for visual evaluation
 0, 15, 62, 140, 250, 390, 562, 765, 1000
 Black N00w – Black N16w = White W $L^*_{TUBLOG,U} = 50 \log(Y / 5Y_U) + 50, Y_N=4, Y_U=20, Y_W=100$



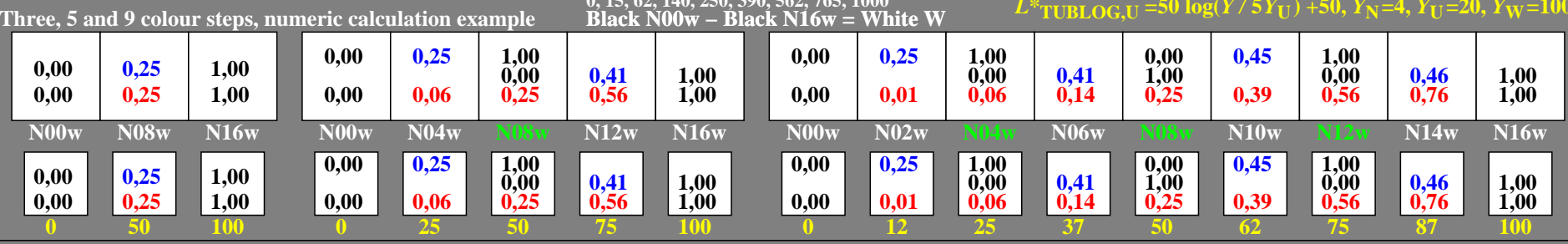
Three, 5 and 9 colour steps, numeric specification
 0, 15, 62, 140, 250, 390, 562, 765, 1000
 Black N00w – Black N16w = White W $L^*_{TUBLOG,U} = 50 \log(Y / 5Y_U) + 50, Y_N=4, Y_U=20, Y_W=100$



Three, 5 and 9 colour steps, numeric calculation
 0, 15, 62, 140, 250, 390, 562, 765, 1000
 Black N00w – Black N16w = White W $L^*_{TUBLOG,U} = 50 \log(Y / 5Y_U) + 50, Y_N=4, Y_U=20, Y_W=100$



Three, 5 and 9 colour steps, numeric calculation example
 0, 15, 62, 140, 250, 390, 562, 765, 1000
 Black N00w – Black N16w = White W $L^*_{TUBLOG,U} = 50 \log(Y / 5Y_U) + 50, Y_N=4, Y_U=20, Y_W=100$



TUB-test chart gel7; Adjacent and separate colour samples for intervall scaling
 Evaluation of colour steps of the series N–W with 3, 5 and 9 steps; surround Grey D=N04w

see similar files of the whole serie: <http://farbe.li.tu-berlin.de/gels.htm>
 technical information: <http://farbe.li.tu-berlin.de> or <http://color.li.tu-berlin.de>

TUB registration: 202240601-gel7/gel710np.pdf / .ps
 application for evaluation and measurement of display or print output

TUB material: code=rh4ta