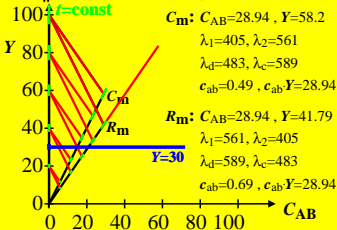
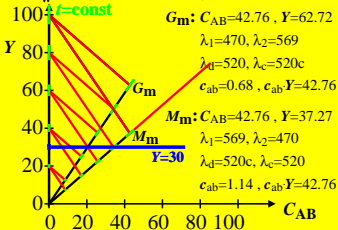


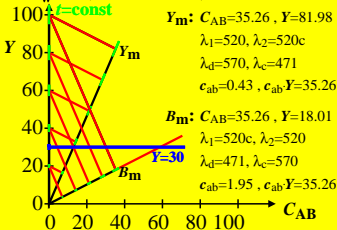
**CIE data for antichromatic optimal *Ostwald* colours of threshold value  $t$  for  $Y=\text{const}$  and for D65 and  $Y_w=100$ ,  $C_m=380\_561$ ,  $R_m=561\_770$**



**CIE data for antichromatic optimal *Ostwald* colours of threshold value  $t$  for  $Y=\text{const}$  and for D65 and  $Y_w=100$ ,  $G_m=470\_570$ ,  $M_m=570\_470$**



**CIE data for antichromatic optimal *Ostwald* colours of threshold value  $t$  for  $Y=\text{const}$  and for D65 and  $Y_w=100$ ,  $Y_m=520\_770$ ,  $B_m=380\_520$**



**CIE data for antichromatic optimal *Ostwald* colours of threshold value  $t$  for  $Y=\text{const}$  and for D65 and  $Y_w=100$ ,  $Y_m=495\_770$ ,  $B_m=380\_495$**

