

A large grid of numbers and letters, organized by rows and columns. Each cell contains a small alphanumeric value. The grid is approximately 27 rows by 100 columns. The letters 'A' through 'Z' are used as column headers, and the letters 'a' through 'z' are used as row headers. The numbers are small, ranging from 0.0 to 0.25, and are arranged in a regular pattern within each cell. The grid is divided into sections by larger letters 'A' through 'Z' and 'a' through 'z'. The overall appearance is a dense, repeating pattern of small text.

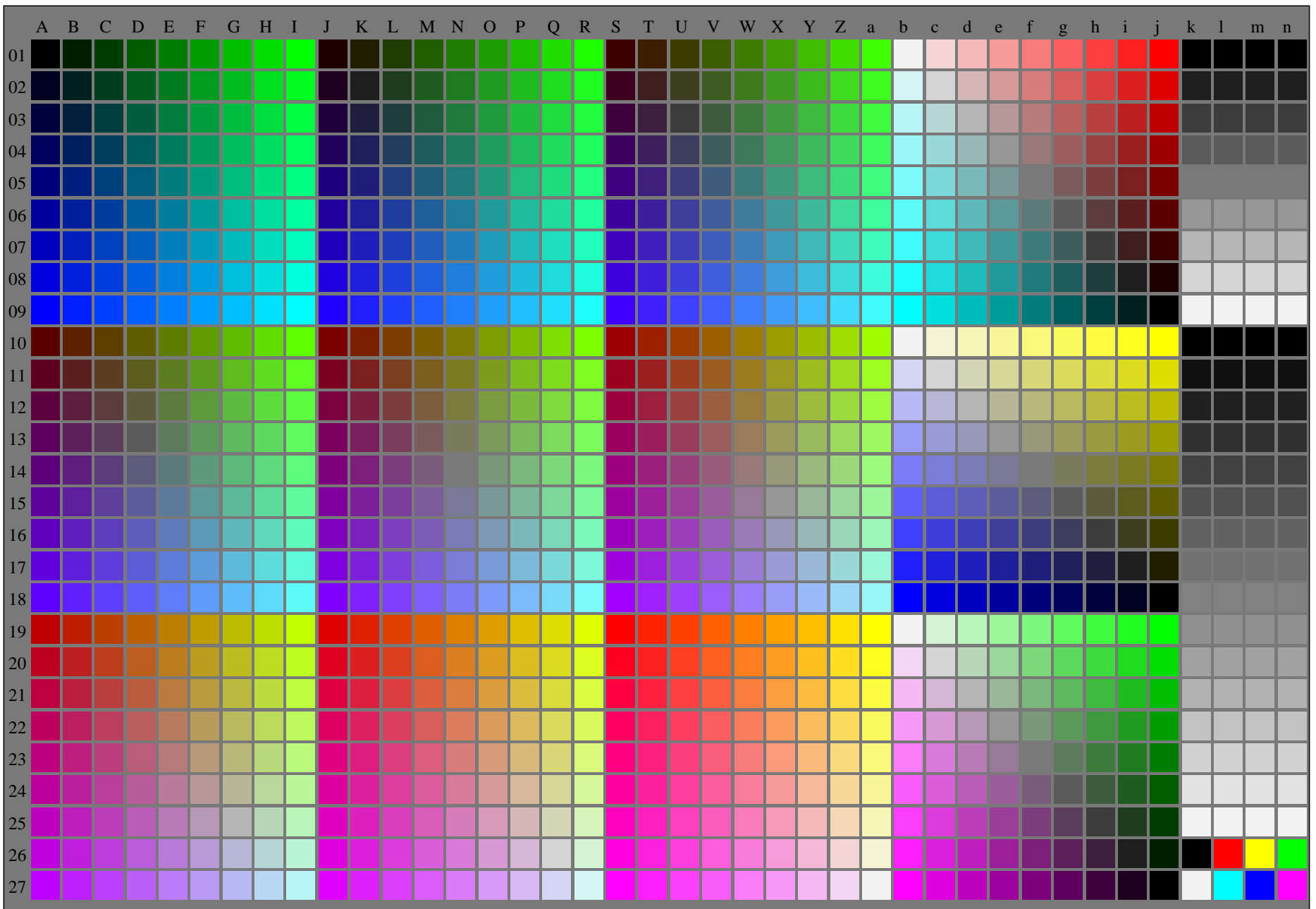
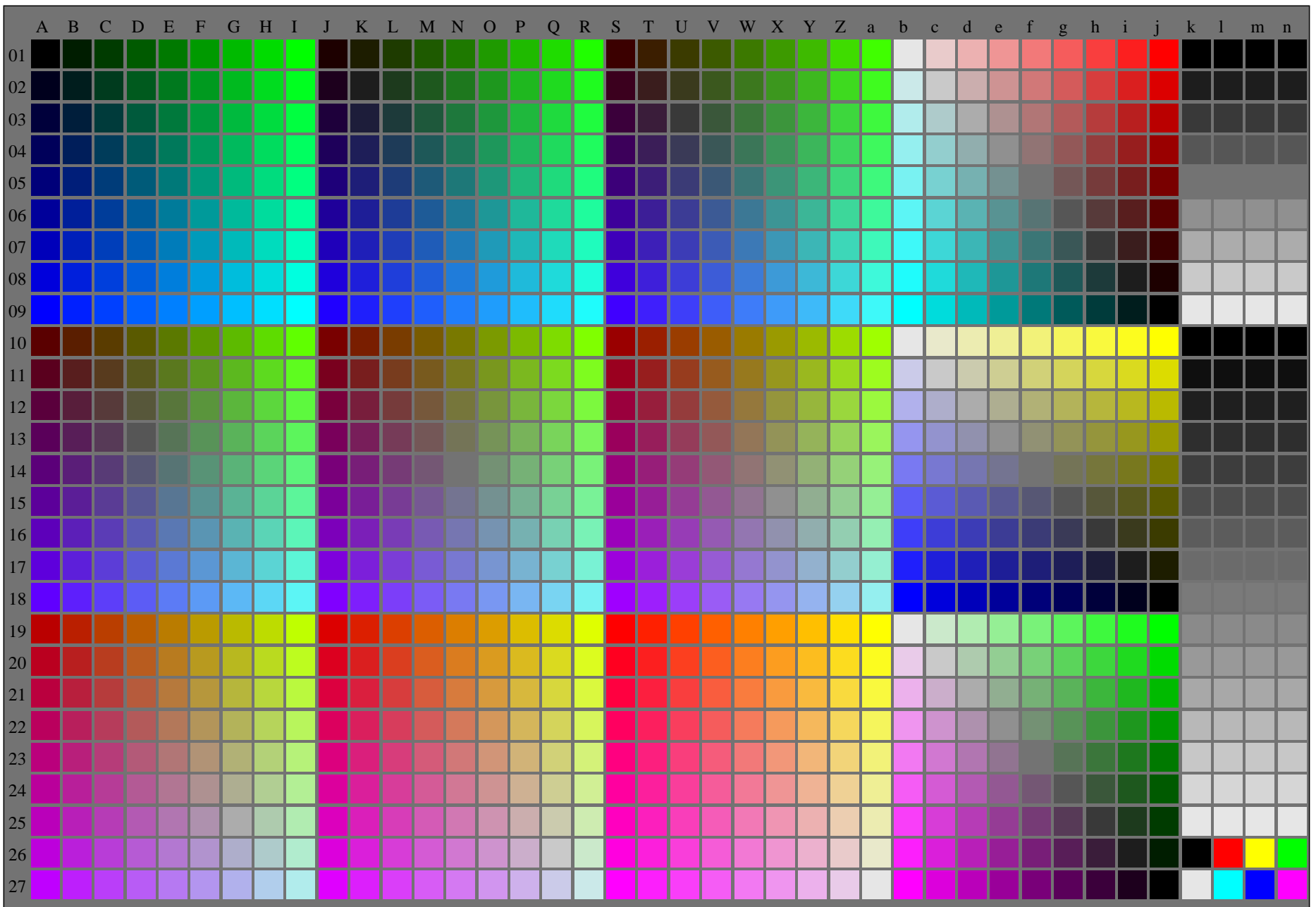
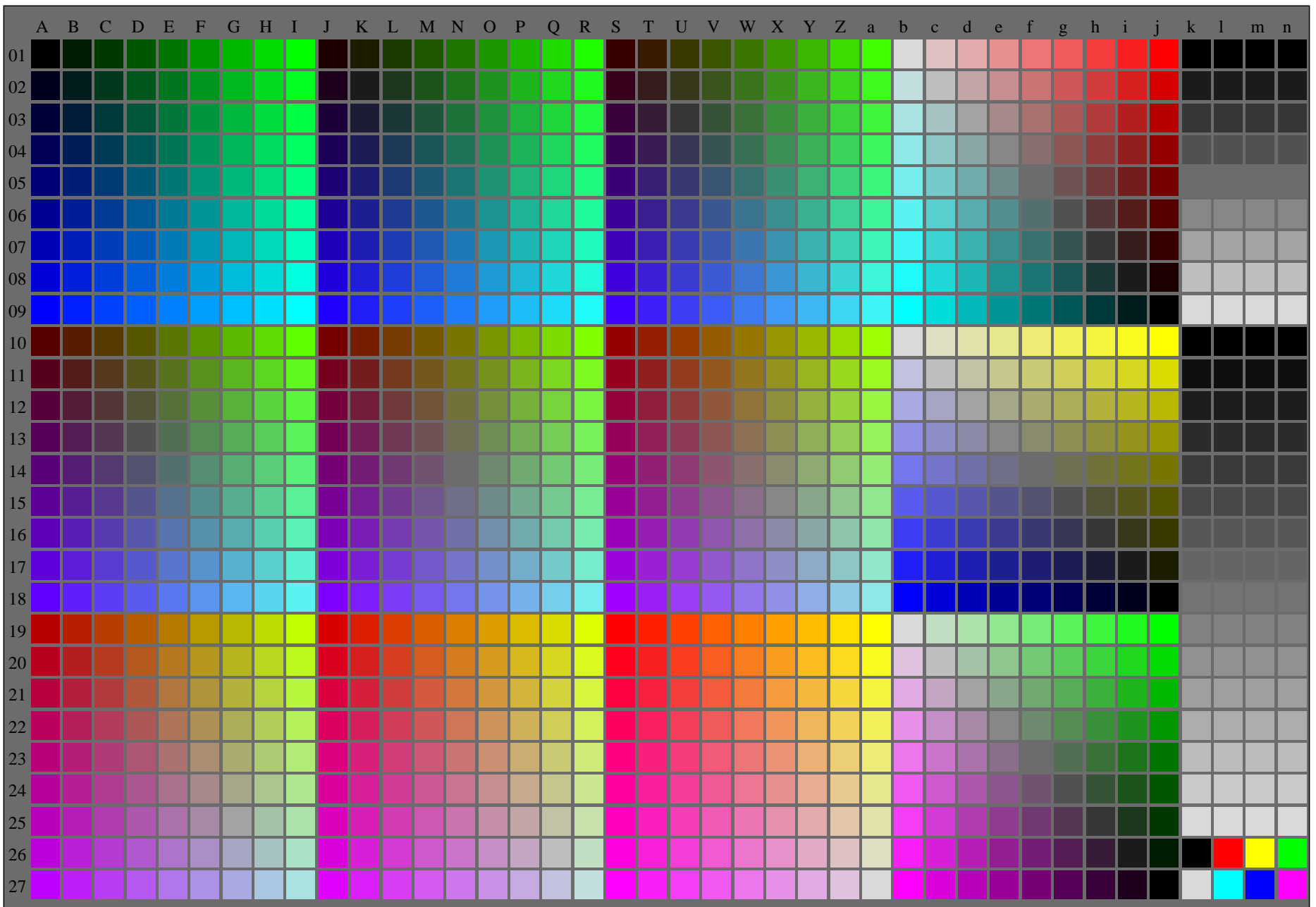


Table with 48 columns and 1000 rows containing alphanumeric data. The first row contains column headers A through 48. Subsequent rows contain data points, with some cells containing rowspan or colspan attributes. A large '0' is present in the top left corner, and a large '1' is present in the top right corner.

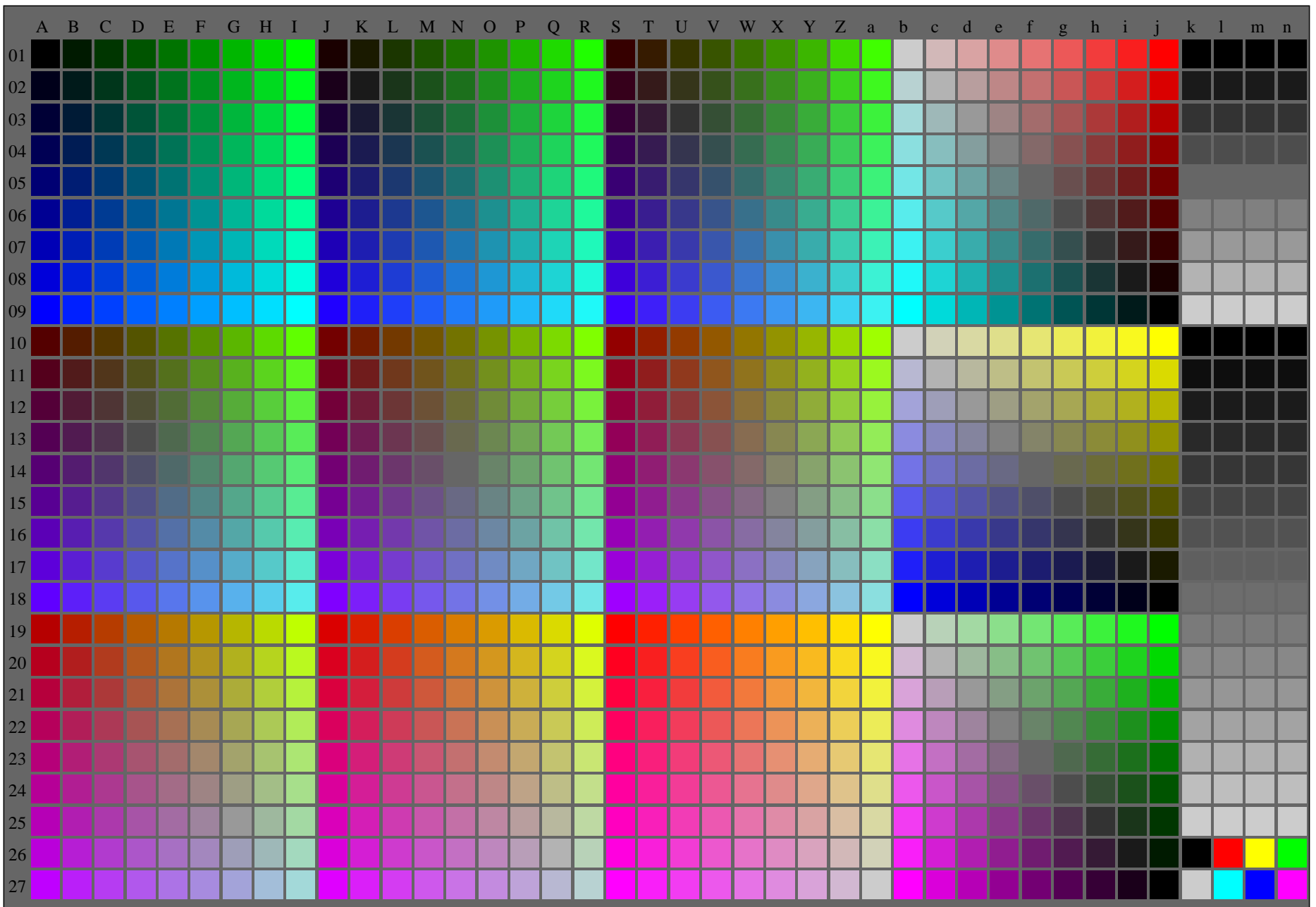














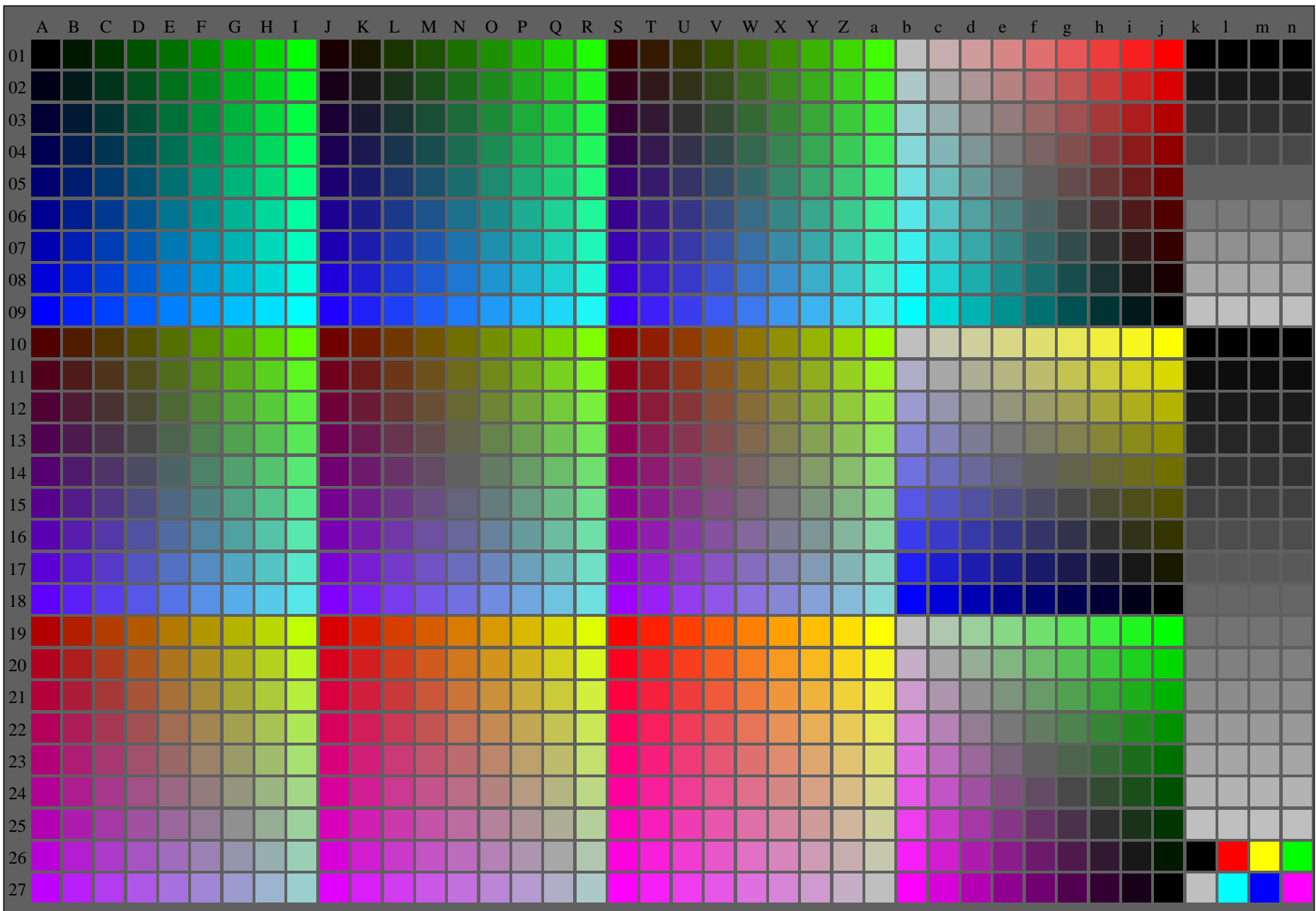
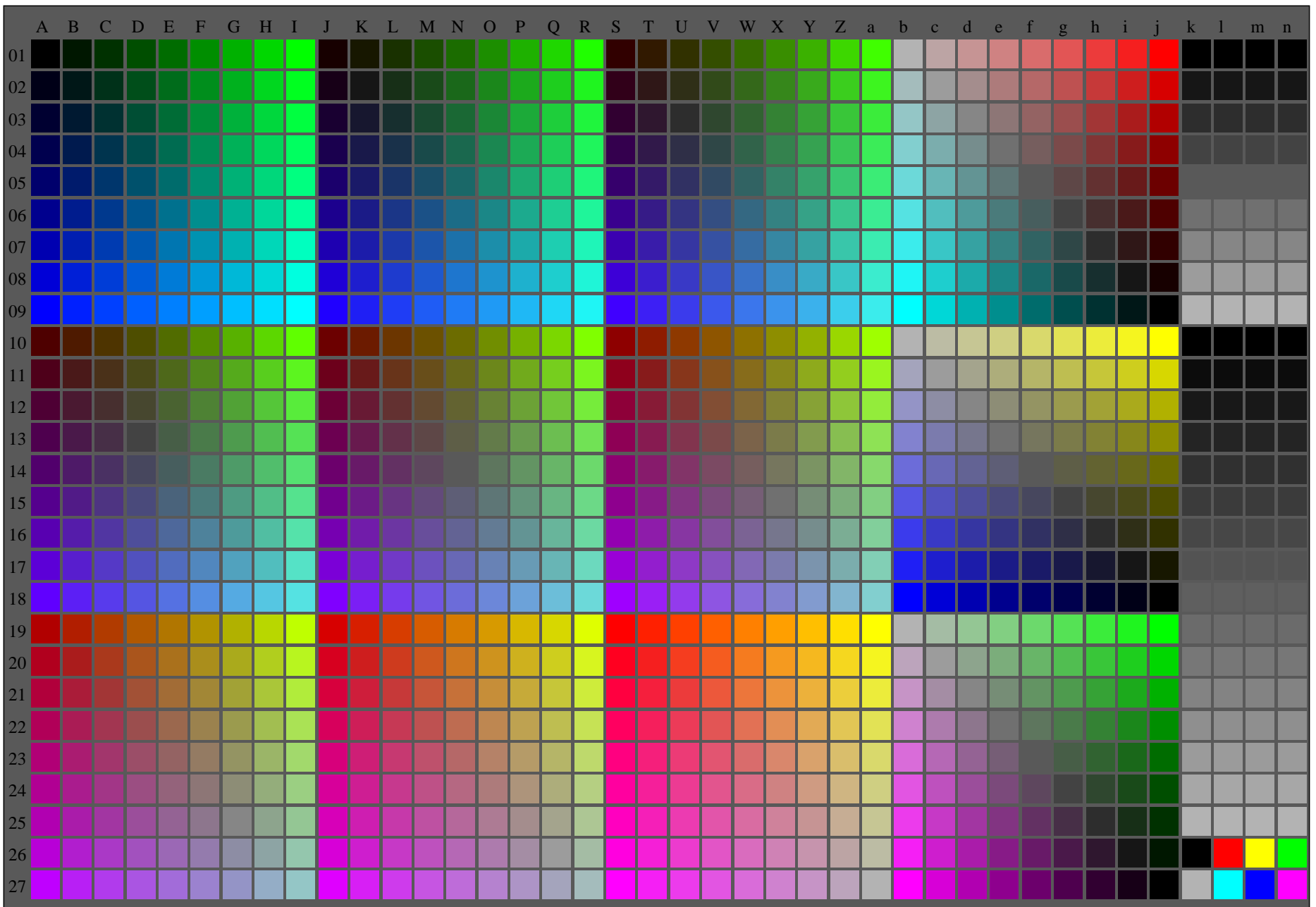
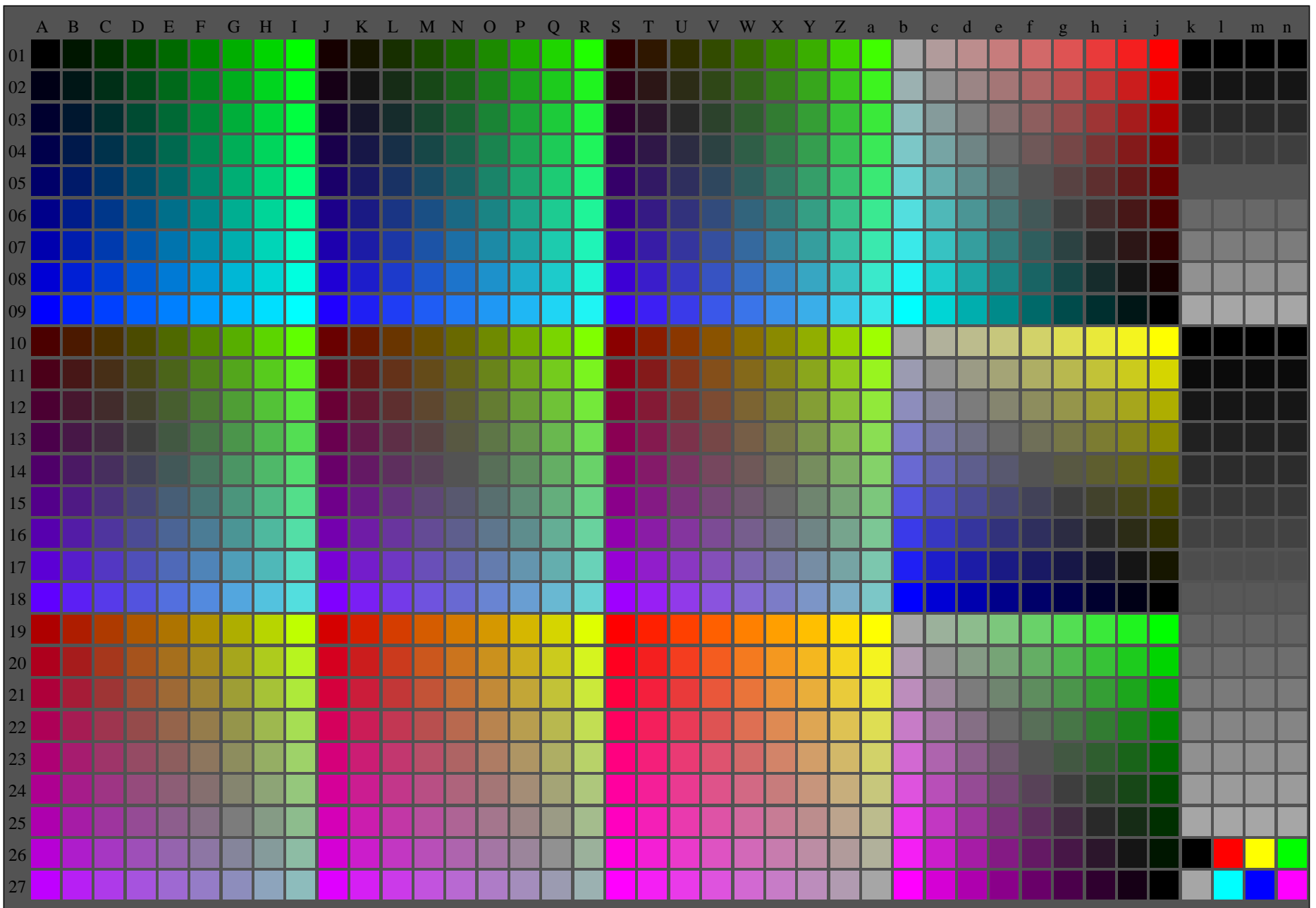


Table with columns labeled A through m and rows labeled 00 to 20. Each cell contains numerical data.







gek20-7A, 15/16

