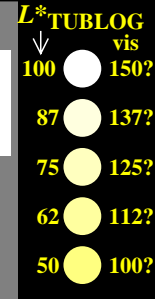
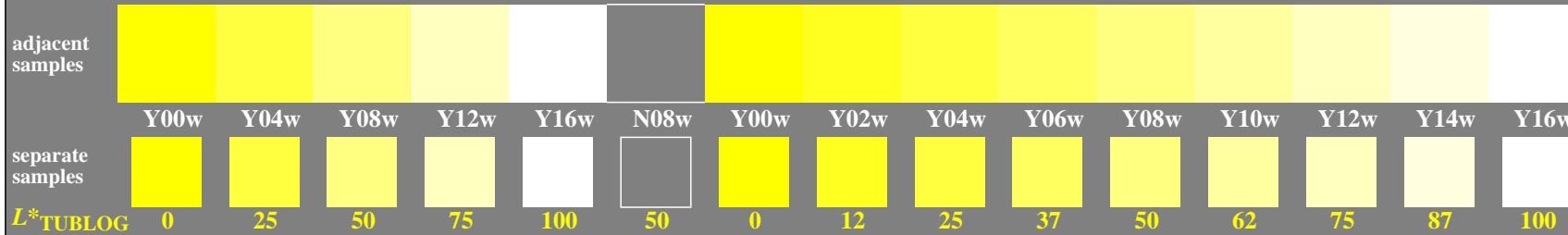
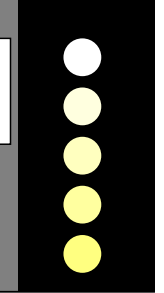
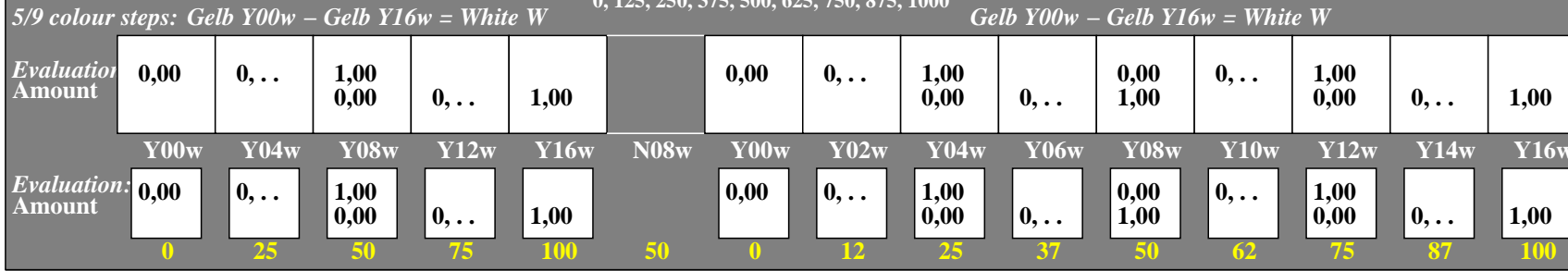


<http://farbe.li.tu-berlin.de/gej3/gej310na.txt> / .ps; only vector graphic VG; start output
 see separate images of this page: <http://farbe.li.tu-berlin.de/gej3/gej3.htm>

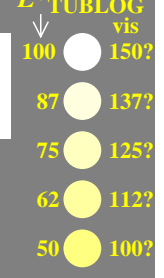
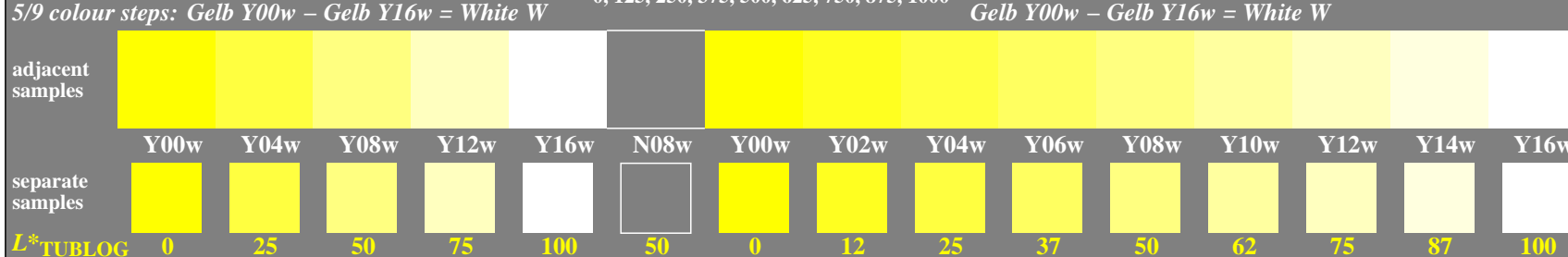
5/9 colour steps: Gelb Y00w – Gelb Y16w = White W 0, 125, 250, 375, 500, 625, 750, 875, 1000 Gelb Y00w – Gelb Y16w = White W



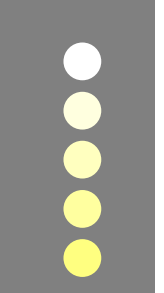
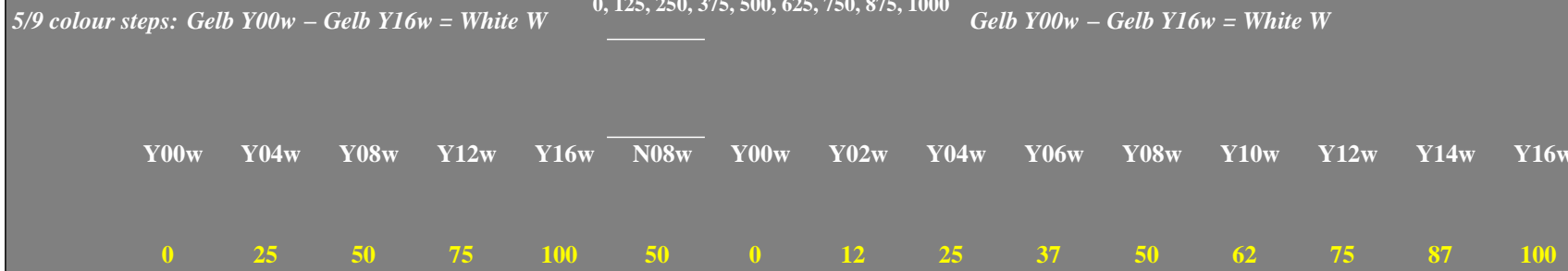
5/9 colour steps: Gelb Y00w – Gelb Y16w = White W 0, 125, 250, 375, 500, 625, 750, 875, 1000 Gelb Y00w – Gelb Y16w = White W



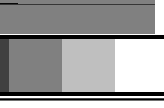
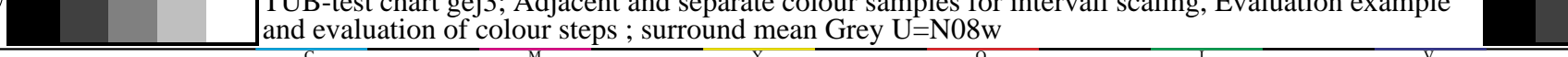
5/9 colour steps: Gelb Y00w – Gelb Y16w = White W 0, 125, 250, 375, 500, 625, 750, 875, 1000 Gelb Y00w – Gelb Y16w = White W



5/9 colour steps: Gelb Y00w – Gelb Y16w = White W 0, 125, 250, 375, 500, 625, 750, 875, 1000 Gelb Y00w – Gelb Y16w = White W



5/9 colour steps: Gelb Y00w – Gelb Y16w = White W 0, 125, 250, 375, 500, 625, 750, 875, 1000 Gelb Y00w – Gelb Y16w = White W



TUB-test chart gej3; Adjacent and separate colour samples for intervall scaling, Evaluation example and evaluation of colour steps ; surround mean Grey U=N08w

see similar files of the whole serie: <http://farbe.li.tu-berlin.de/gej3/gej310na.txt> or <http://color.li.tu-berlin.de>

TUB registration: 20240601-gej3/gej310na.txt / .ps
 application for evaluation and measurement of display or print output

TUB material: code=rh4ta