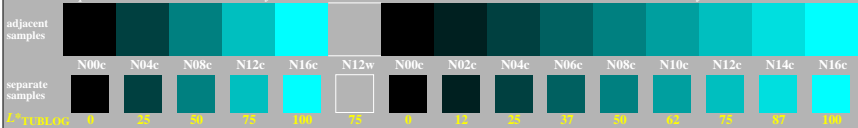


<http://farbe.li.tu-berlin.de/gei4/gei4l0n1.txt> / .ps; only vector graphic VG; start output see separate images of this page: <http://farbe.li.tu-berlin.de/gei4/gei4.htm>

0, 125, 250, 375, 500, 625, 750, 875, 1000

5/9 colour steps: Black N00c – Black N16c = Cyan C

Black N00c – Black N16c = Cyan C



see similar files of the whole serie: <http://farbe.li.tu-berlin.de/gei4s.htm>
 technical information: <http://farbe.li.tu-berlin.de> or <http://color.li.tu-berlin.de>

TUB registration: 20240601-gei4/gei4l0n1.txt / .ps
 application for evaluation and measurement of display or print output
 TUB material: code=thata

0, 125, 250, 375, 500, 625, 750, 875, 1000

5/9 colour steps: Black N00c – Black N16c = Cyan C

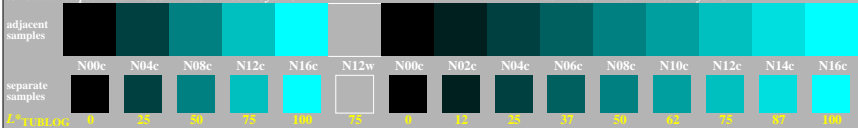
Black N00c – Black N16c = Cyan C



0, 125, 250, 375, 500, 625, 750, 875, 1000

5/9 colour steps: Black N00c – Black N16c = Cyan C

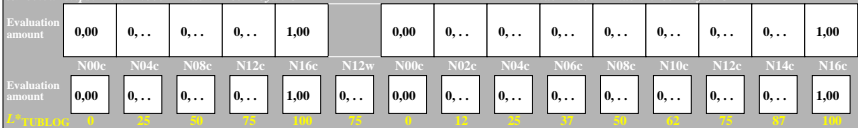
Black N00c – Black N16c = Cyan C



0, 125, 250, 375, 500, 625, 750, 875, 1000

5/9 colour steps: Black N00c – Black N16c = Cyan C

Black N00c – Black N16c = Cyan C



TUB-test chart gei4; Adjacent and separate colour samples for intervall scaling, Evaluation example and evaluation of colour steps of the series N-C with 5 and 9 steps; surround light Grey H=N12w