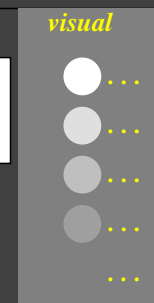
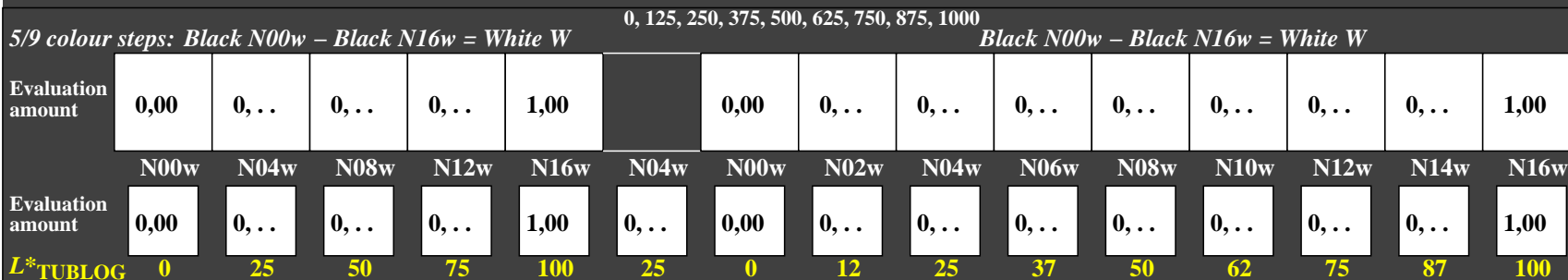
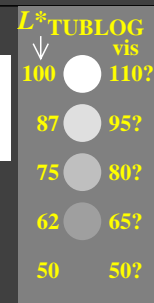
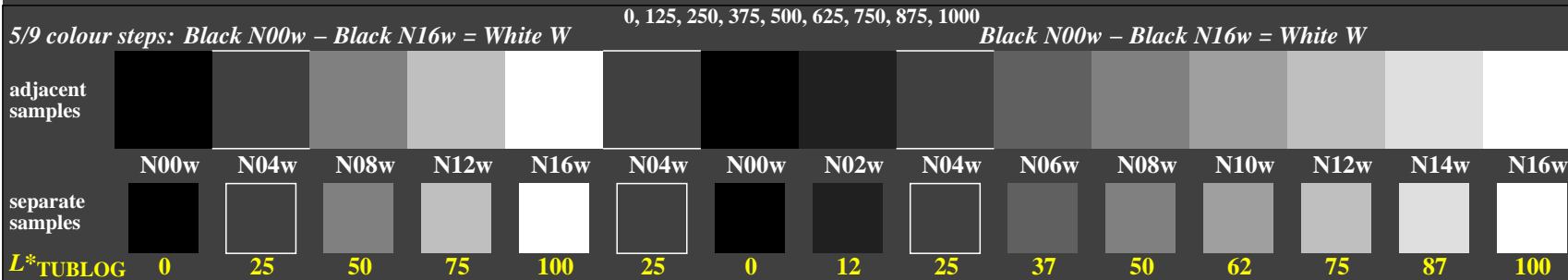
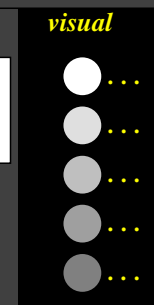
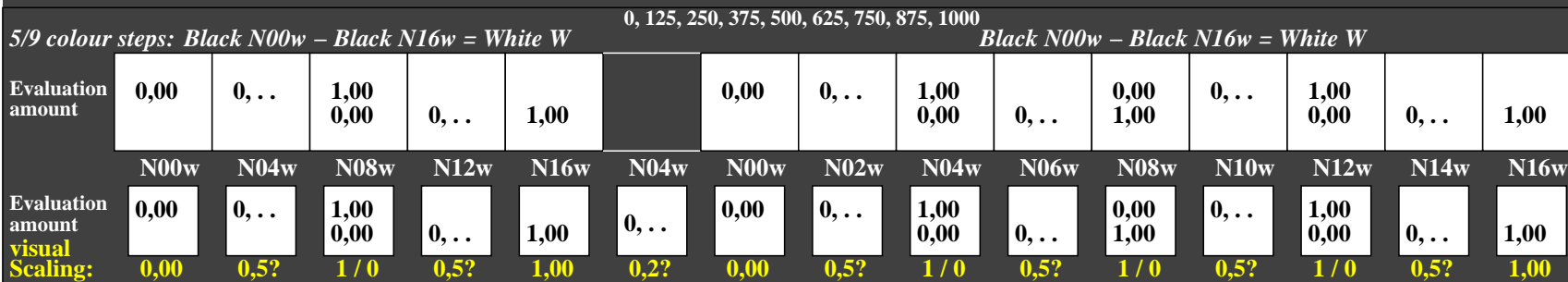
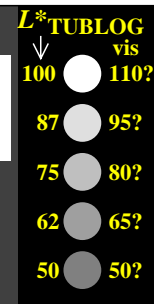
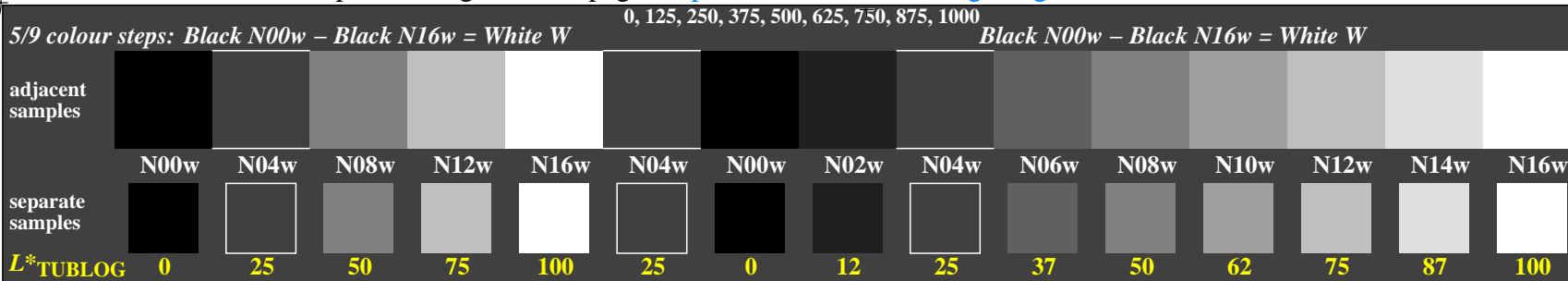


<http://farbe.li.tu-berlin.de/geh0/geh0I0na.txt> /ps; only vector graphic VG; start output  
 see separate images of this page: <http://farbe.li.tu-berlin.de/geh0/geh0.htm>



geh00-7n, Evaluation sheet: 5 and 9 colour steps, exp0=1, expg=1, inw=1, xchart=2

TUB-test chart geh0; Adjacent and separate colour samples for intervall scaling, Evaluation example and evaluation of colour steps of the series N–W with 5 and 9 steps; surround dark Grey D=N04w

see similar files of the whole serie: <http://farbe.li.tu-berlin.de/geh0/geh0I0na.txt> /ps  
 technical information: <http://farbe.li.tu-berlin.de> or <http://color.li.tu-berlin.de>

TUB registration: 20240601-geh0/geh0I0na.txt /ps  
 application for evaluation and measurement of display or print output

TUB material: code=rh4ta