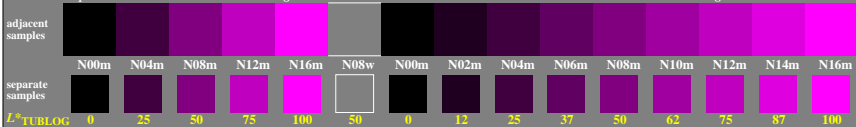


<http://farbe.li.tu-berlin.de/geg5/geg5l0n1.txt/.ps>; only vector graphic VG; start output
 see separate images of this page: <http://farbe.li.tu-berlin.de/geg5/geg5.htm>

5/9 colour steps: Black N00m – Black N16m = Magenta M

0, 125, 250, 375, 500, 625, 750, 875, 1000

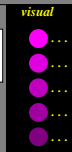
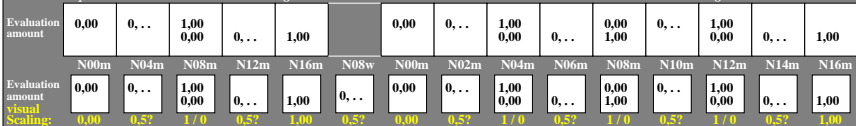
Black N00m – Black N16m = Magenta M



5/9 colour steps: Black N00m – Black N16m = Magenta M

0, 125, 250, 375, 500, 625, 750, 875, 1000

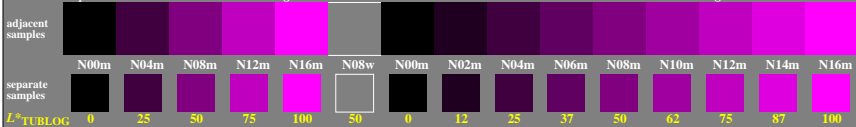
Black N00m – Black N16m = Magenta M



5/9 colour steps: Black N00m – Black N16m = Magenta M

0, 125, 250, 375, 500, 625, 750, 875, 1000

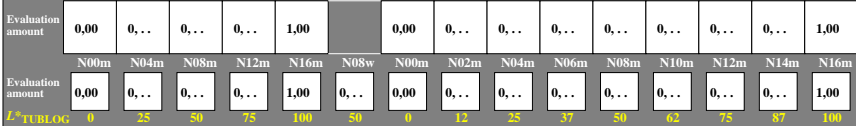
Black N00m – Black N16m = Magenta M



5/9 colour steps: Black N00m – Black N16m = Magenta M

0, 125, 250, 375, 500, 625, 750, 875, 1000

Black N00m – Black N16m = Magenta M



TUB-test chart geg5; Adjacent and separate colour samples for interval scaling, Evaluation example and evaluation of colour steps of the series N–M with 5 and 9 steps; surround mean Grey U=N08w

see similar files of the whole serie: <http://farbe.li.tu-berlin.de/geg5.htm>
 technical information: <http://farbe.li.tu-berlin.de> or <http://color.li.tu-berlin.de>

TUB registration: 20240601-geg5/geg5l0n1.txt/.ps
 application for evaluation and measurement of display or print output

TUB material: code=thata