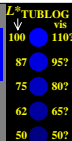
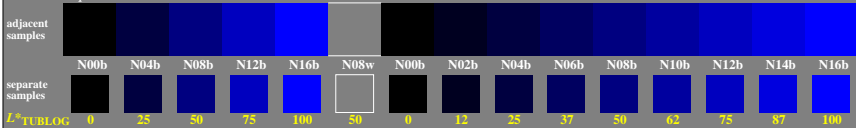


<http://farbe.li.tu-berlin.de/geg3/geg3l0n1.txt/.ps>; only vector graphic VG; start output
 see separate images of this page: <http://farbe.li.tu-berlin.de/geg3/geg3.htm>

5/9 colour steps: Black N00b – Black N16b = Blue B

0, 125, 250, 375, 500, 625, 750, 875, 1000

Black N00b – Black N16b = Blue B

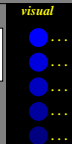
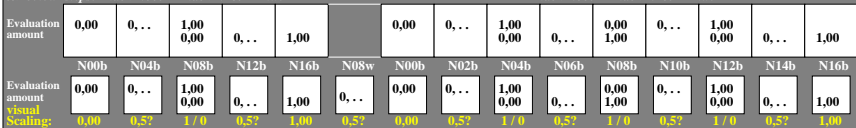


geg30-1a, Test samples: 5 and 9 colour steps, exp0=1, expg=1, inv=1, schart=0

5/9 colour steps: Black N00b – Black N16b = Blue B

0, 125, 250, 375, 500, 625, 750, 875, 1000

Black N00b – Black N16b = Blue B

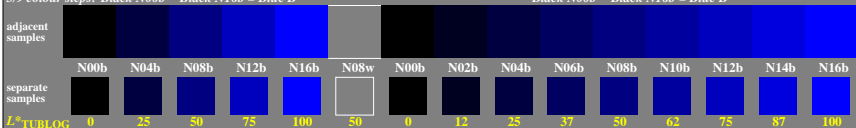


geg30-3a, Evaluation sheet: 5 and 9 colour steps, exp0=1, expg=1, inv=1, schart=1

5/9 colour steps: Black N00b – Black N16b = Blue B

0, 125, 250, 375, 500, 625, 750, 875, 1000

Black N00b – Black N16b = Blue B

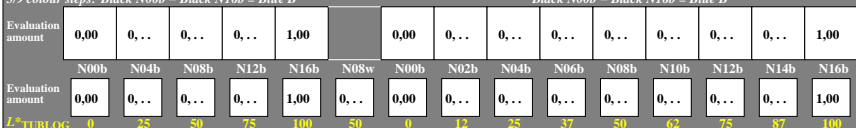


geg30-5a, Test samples: 5 and 9 colour steps, exp0=1, expg=1, inv=1, schart=0

5/9 colour steps: Black N00b – Black N16b = Blue B

0, 125, 250, 375, 500, 625, 750, 875, 1000

Black N00b – Black N16b = Blue B



geg30-7a, Evaluation sheet: 5 and 9 colour steps, exp0=1, expg=1, inv=1, schart=2

TUB-test chart geg3; Adjacent and separate colour samples for interval scaling, Evaluation example and evaluation of colour steps of the series N–B with 5 and 9 steps; surround mean Grey U=N08w

see similar files of the whole serie: <http://farbe.li.tu-berlin.de/gegs.htm>
 technical information: <http://farbe.li.tu-berlin.de> or <http://color.li.tu-berlin.de>

TUB registration: 20240601-geg3/geg3l0n1.txt/.ps
 application for evaluation and measurement of display or print output
 TUB material: code=thata