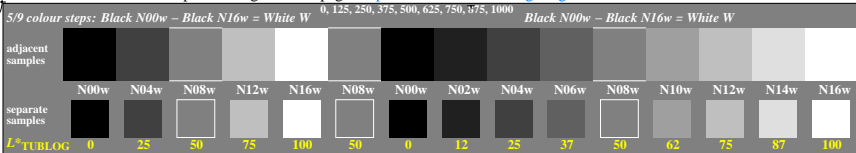
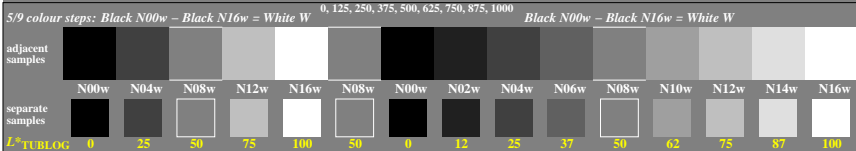


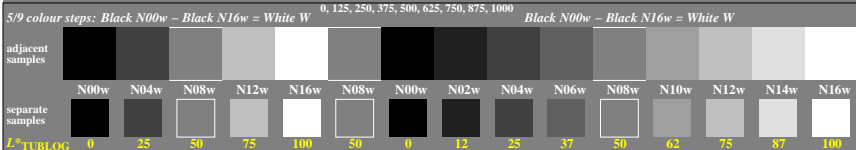
<http://farbe.li.tu-berlin.de/gef0/gef0l0n1.txt> / .ps; only vector graphic VG; start output
 see separate images of this page: <http://farbe.li.tu-berlin.de/gef0/gef0.htm>



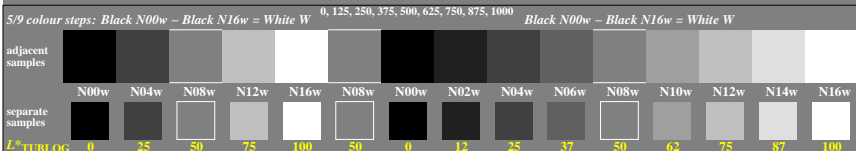
gef0-1a, Test samples: 5 and 9 colour steps, exp0=1, expg=1, inv=1



gef0-3a, Test samples: 5 and 9 colour steps, exp0=1, expg=1, inv=1



gef0-5a, Test samples: 5 and 9 colour steps, exp0=1, expg=1, inv=1



gef0-7a, Test samples: 5 and 9 colour steps, exp0=1, expg=1, inv=1

TUB-test chart gef0; Adjacent and separate colour samples for intervall scaling
 Evaluation of colour steps of the series N–W with 5 and 9 steps; surround mean Grey U=N08w

L^* TUBLOG vis
 100 150?
 87 137?
 75 125?
 62 112?
 50 100?

L^* TUBLOG vis
 100 150?
 87 137?
 75 125?
 62 112?
 50 100?

L^* TUBLOG vis
 100 150?
 87 137?
 75 125?
 62 112?
 50 100?

TUB registration: 20240601-gef0/gef0l0n1.txt / .ps
 application for evaluation and measurement of display or print output

TUB material: code=thata

see similar files of the whole serie: <http://farbe.li.tu-berlin.de/gef0s.htm>
 technical information: <http://farbe.li.tu-berlin.de> or <http://color.li.tu-berlin.de>