

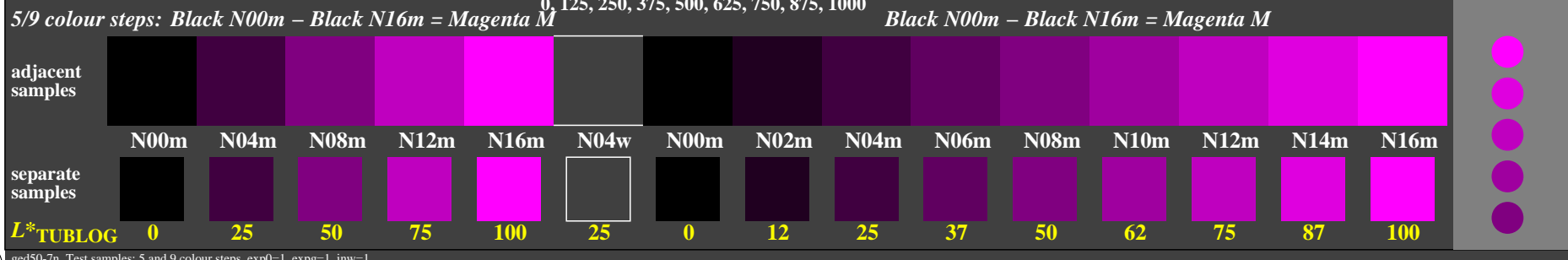
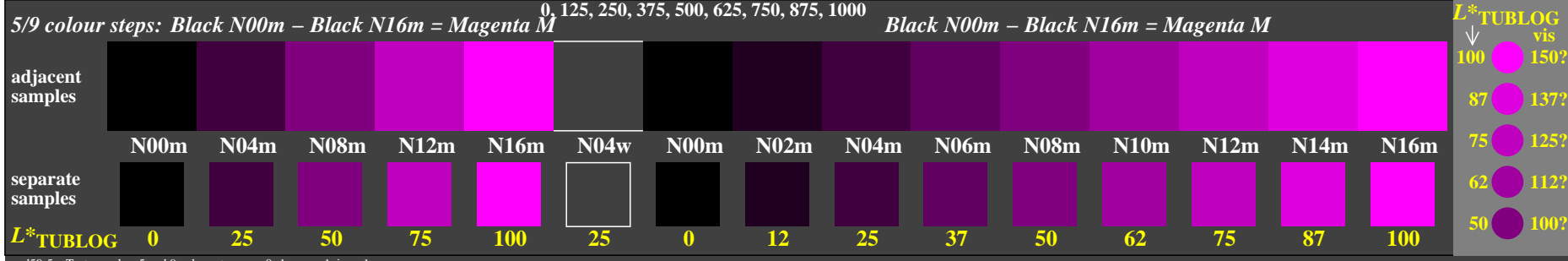
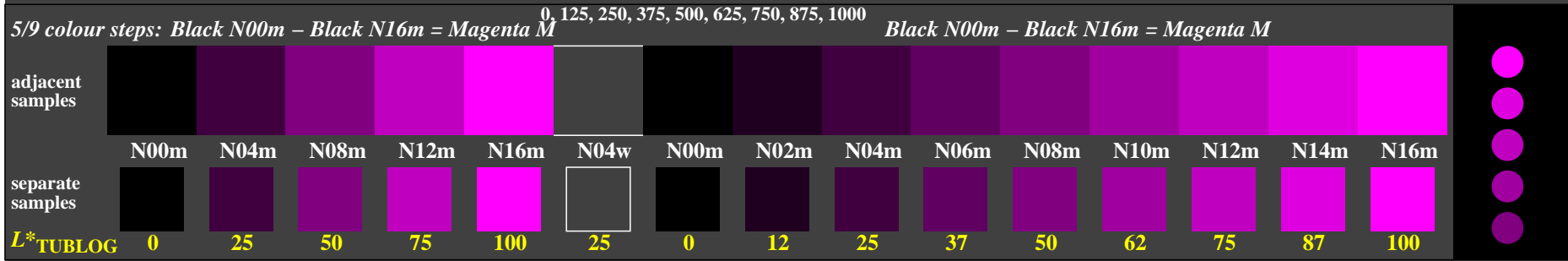
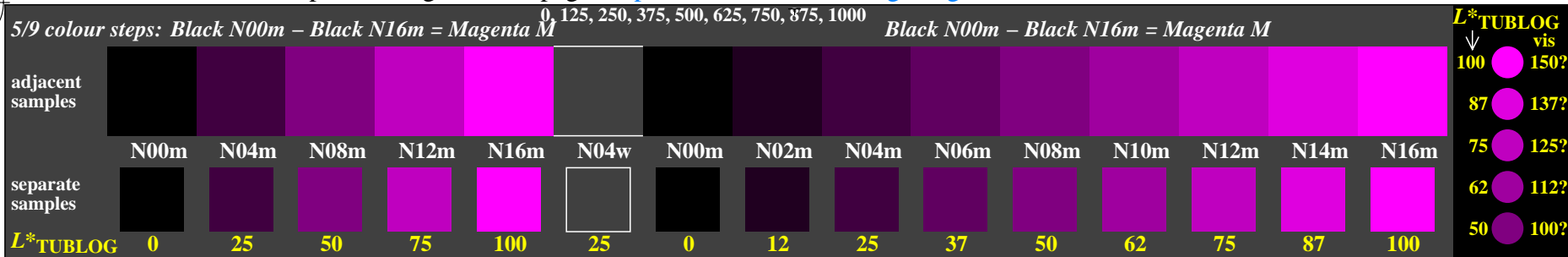
<http://farbe.li.tu-berlin.de/ged5/ged510np.pdf> /.ps; only vector graphic VG; start output

see separate images of this page: <http://farbe.li.tu-berlin.de/ged5/ged5.htm>

see similar files of the whole serie: <http://farbe.li.tu-berlin.de/geds.htm>  
technical information: <http://farbe.li.tu-berlin.de> or <http://color.li.tu-berlin.de>

TUB registration: 20240601-ged5/ged510np.pdf /.ps  
application for evaluation and measurement of display or print output

TUB material: code=rh4ta



TUB-test chart ged5; Adjacent and separate colour samples for intervall scaling  
Evaluation of colour steps of the series N–M with 5 and 9 steps; surround dark Grey D=N04w